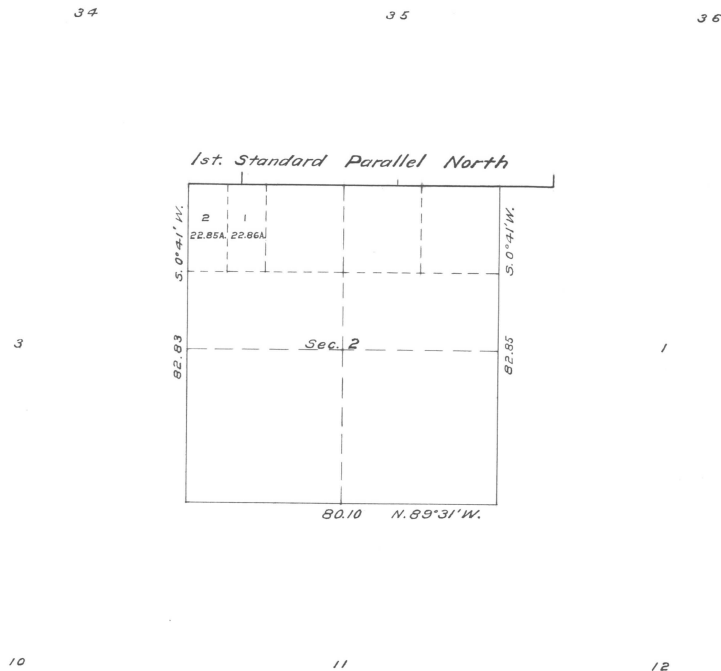


SUPPLEMENTAL PLAT
SECTION 2 T. 4 N. R. 28 E. OF THE WILLAMETTE MERIDIAN OREGON.
SCALE 20 CHAINS = 1 INCH



I hereby certify the above to be a correct supplemental Diagram of Section 2 - T. 4 N. R. 28 E. of the Willamette Meridian Oregon, showing the division of a fractional tract in the N.W. 1/4 of the N.W. 1/4 of said section and designating same as Lots 1 and 2 (described upon T₆ plat approved by this office December 31, 1860 as 45.71 A. without lot number), prepared in compliance with instructions from the Hon. Acting Commissioner of the General Land Office contained in letter "E" dated November 10, 1913, - so that patented Homestead Entry 0344 La Grande, Oregon, land District, made August 14, 1904, by O. J. Douglas, 3rd farm unit "D", of the 1/4 NW 1/4 NW 1/4 of said section and T₆, (Umatilla Project, subject to the provisions of the Reclamation Act of June 17, 1902, 32 Stats. 388) may be properly described.

U. S. Surveyor General's Office
Portland, Oregon, November 21, 1913

Edward E. Worth
U. S. Surveyor General
for Oregon