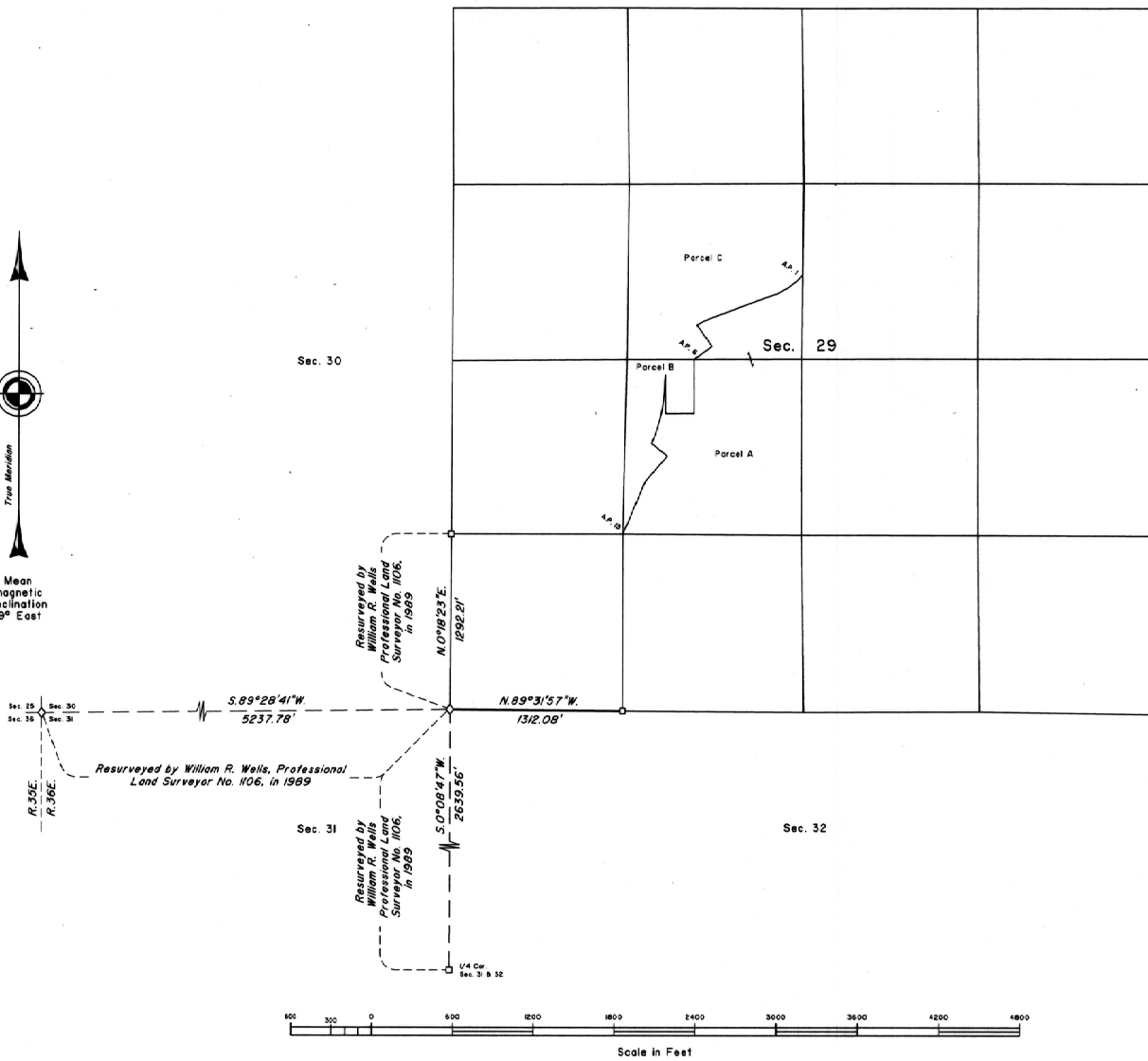


TOWNSHIP 3 NORTH, RANGE 36 EAST, OF THE WILLAMETTE MERIDIAN, OREGON

CORRECTIVE DEPENDENT RESURVEY

Sec. 20



A history of surveys is contained in the field notes.

This plat represents a corrective dependent resurvey of a portion of the subdivision lines, T. 3 N., R. 36 E., Willamette Meridian, Oregon, designed to restore the corners in their true original locations according to the best available evidence.

Measured distances and directions have been adjusted by Trimble Geomatics Office (TGO), computer software that incorporates a least squares adjustment routine. The adjusted bearings and distances are reported to the nearest second and 0.01 foot.

The lottings and areas are as shown on the plat approved June 14, 1890, and the plat accepted November 12, 1980.

The survey was executed by Richard S. Kaiser, Cadastral Surveyor, beginning June 28, 2004, and completed June 29, 2004, pursuant to Special Instructions dated May 27, 2004, under Group Number 2090, Oregon.

Timber in the area consists of pine, fir and cottonwood.

Note:  
Unless otherwise indicated, all lightweight lines in and around section 29 were resurveyed or surveyed by Ronald W. Scherler, in 1976-79. See plat accepted November 12, 1980 for survey information.

LEGEND

- ◊ Original corner previously remonumented
- Corner previously established or reestablished

UNITED STATES DEPARTMENT OF THE INTERIOR  
BUREAU OF LAND MANAGEMENT

Portland, Oregon June 2, 2006

This plat is strictly conformable to the approved field notes, and the survey, having been correctly executed in accordance with the requirements of law and the regulations of this Bureau, is hereby accepted.

For the Director

*Mary J. M. Havel*

Chief Cadastral Surveyor of Oregon