



# FIELD NOTES

of

RESURVEY OF THE EAST, SOUTH, WEST AND

WESTERN THREE MILES OF NORTH BOUNDARY

of the

DIMINISHED UMATILLA INDIAN RESERVATION

Of the \_\_\_\_\_ Meridian,

In the State of \_\_\_\_\_ Oregon

EXECUTED BY

L. E. Wilkes

In the capacity of U. S. Surveyor\_\_\_\_, under Special Instructions dated \_\_\_\_\_ Feb. 20\_\_\_\_, 1917, issued by the United States Surveyor General to govern surveys included in Group No. \_\_\_\_\_ 29\_\_\_\_\_, which were approved by the Commissioner of the General Land Office, \_\_\_\_\_ Apr. 11\_\_\_\_, 1917, and Assignment Instructions dated \_\_\_\_\_ May 3\_\_\_\_, 1917

Survey commenced \_\_\_\_\_ May 14\_\_\_\_, 1917

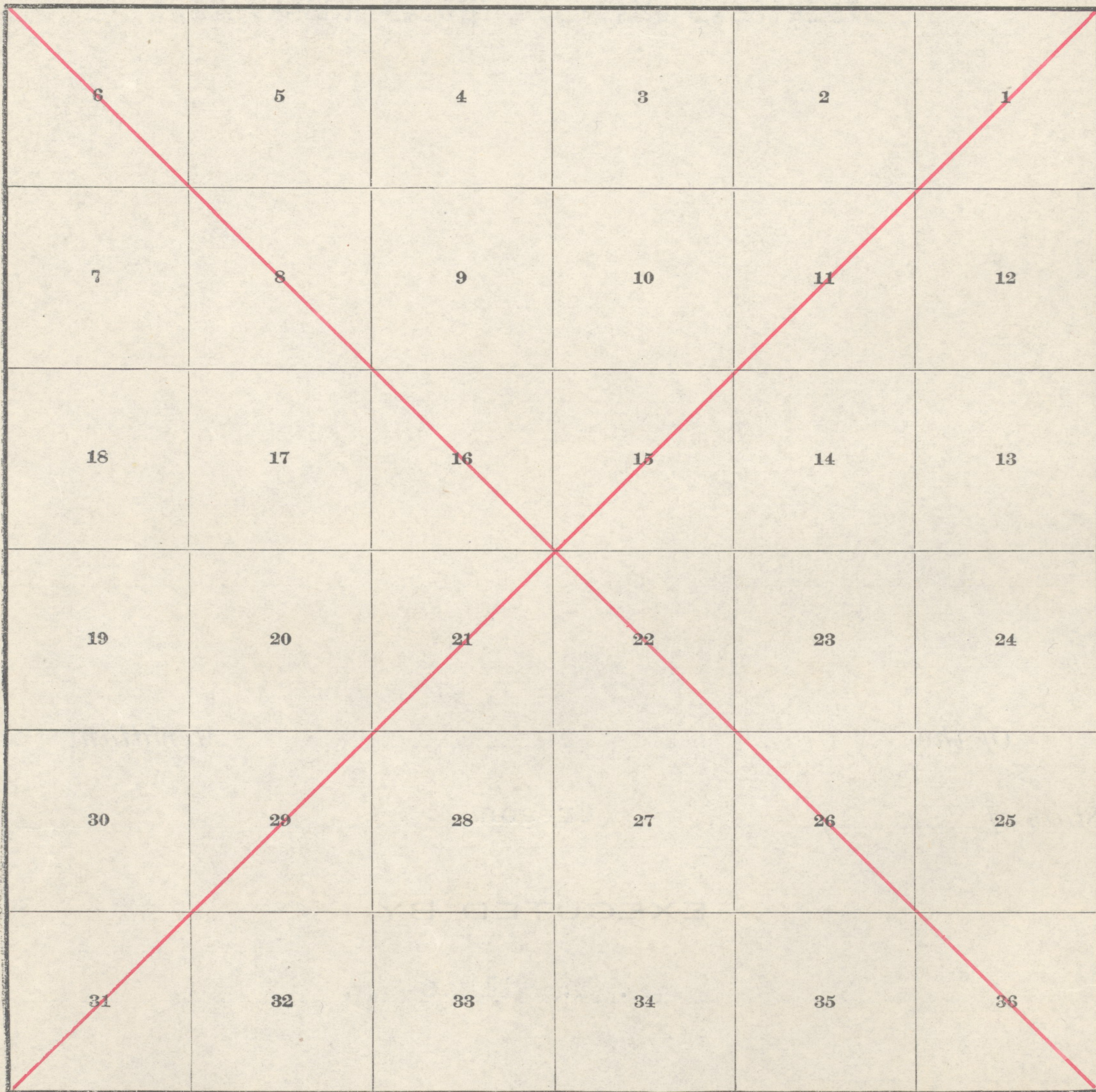
Survey completed \_\_\_\_\_ November 22\_\_\_\_, 1917

ACCEPTED BY THE HON. COMMISSIONER G. L. O. May 10, 1919

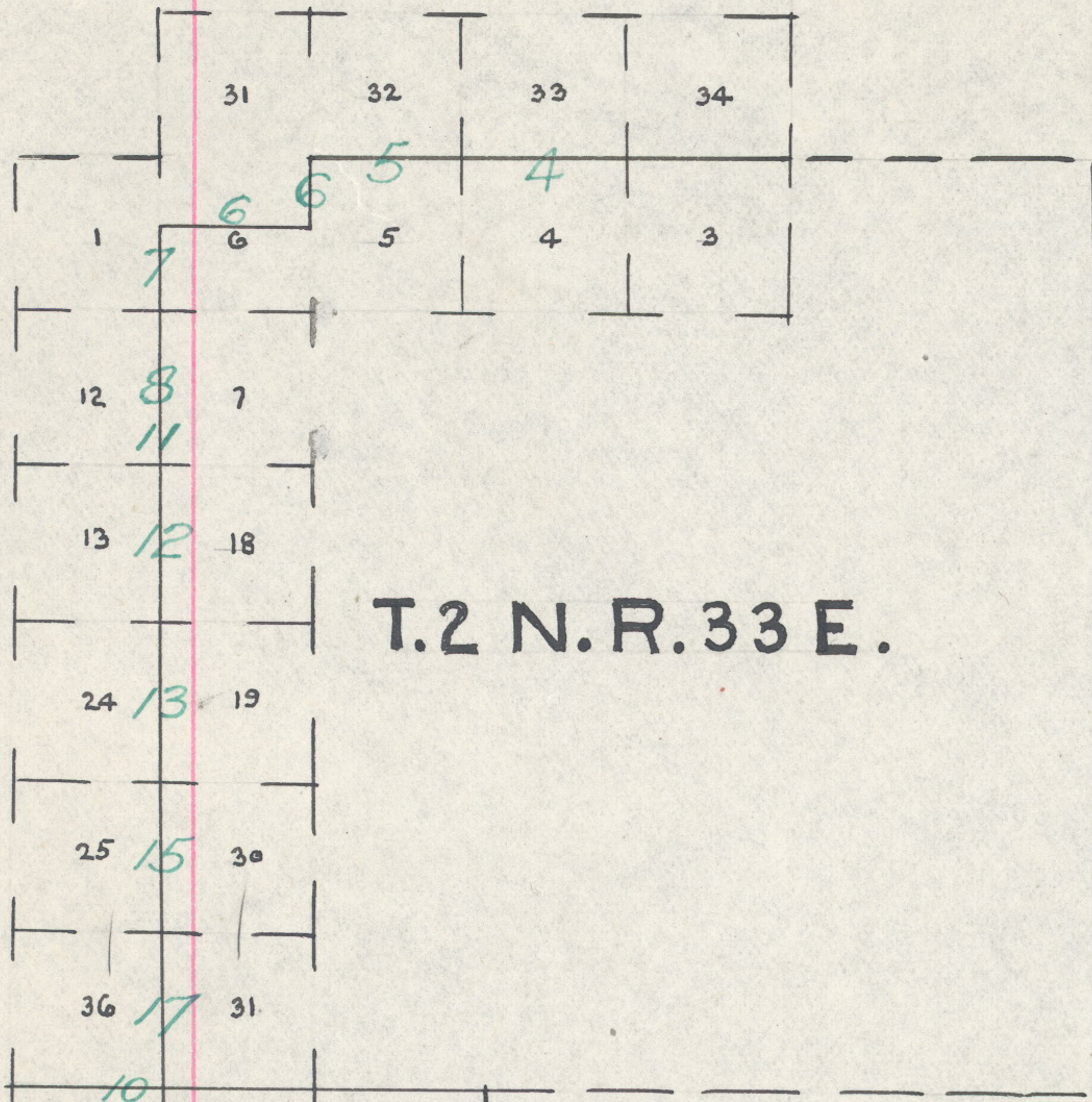
FIELD NOTES

# INDEX DIAGRAM.

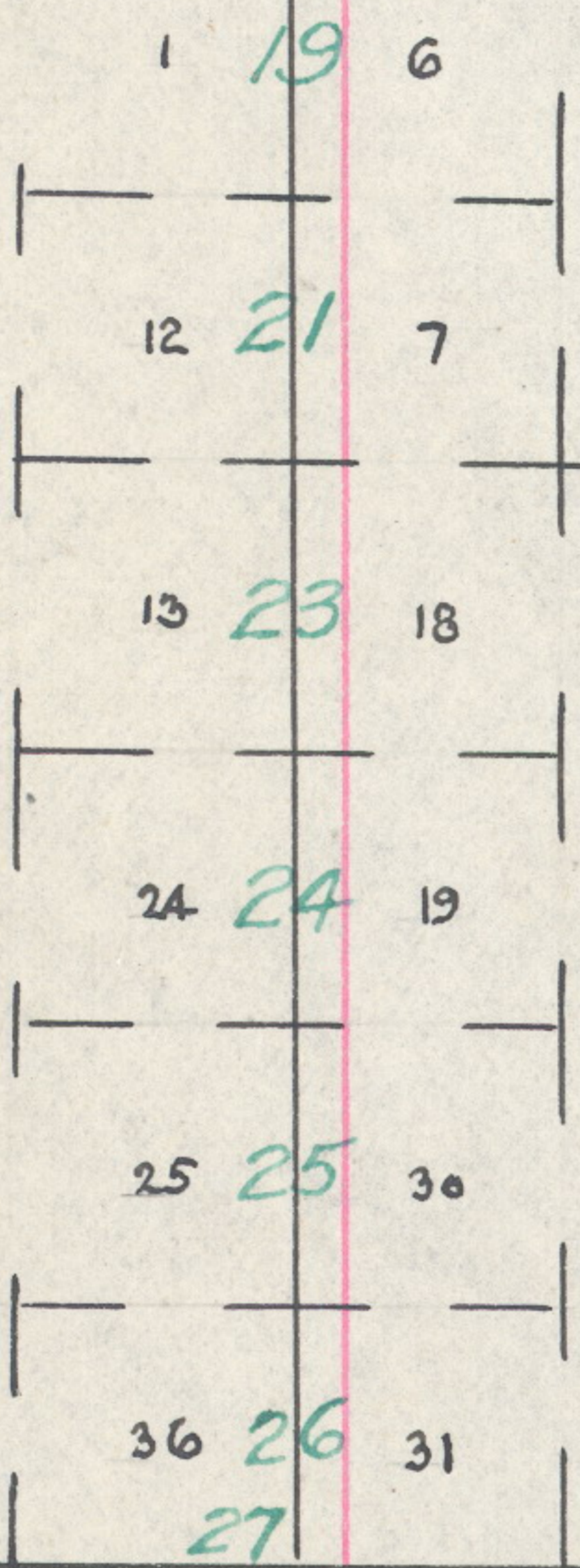
Township -----, Range -----



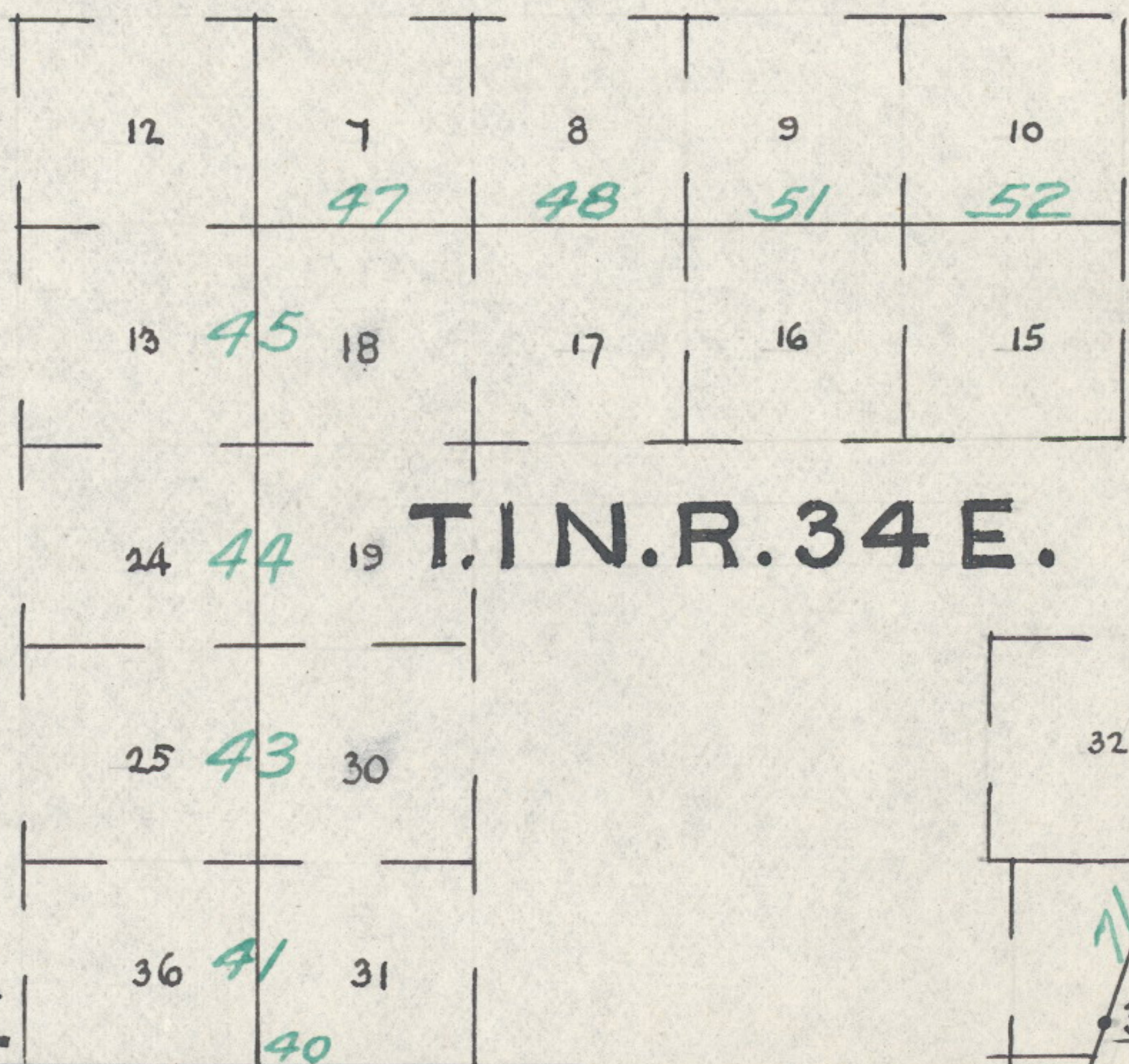
INDEX DIAGRAM



T.2 N. R. 33 E.

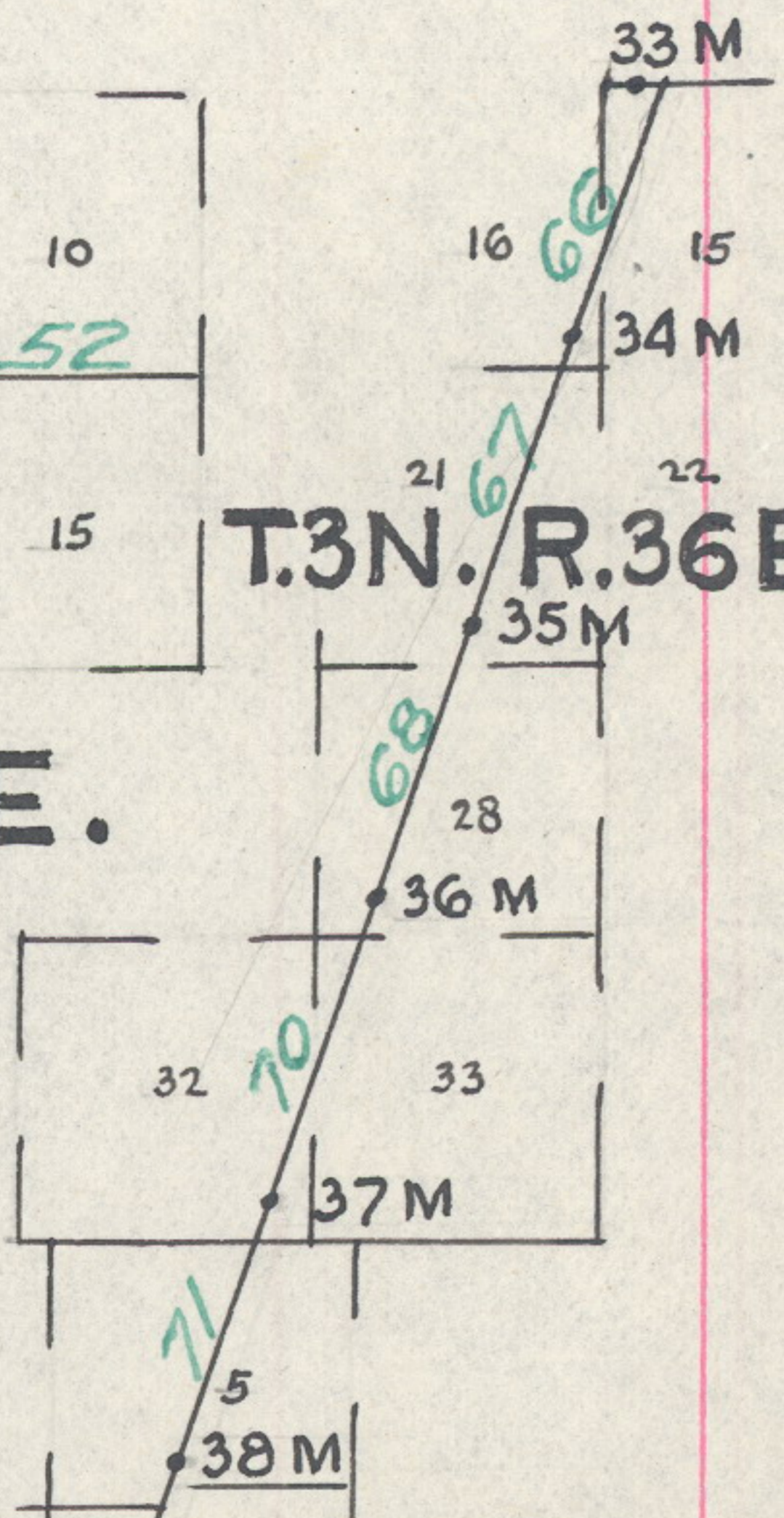


T.1 N. R. 33 E.

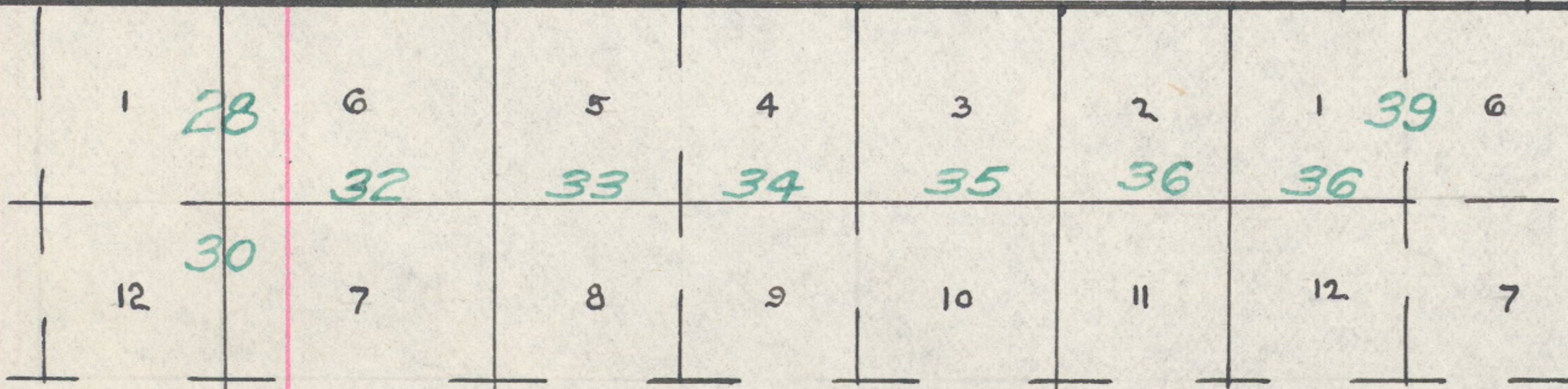


T.1 N. R. 34 E.

T.3 N. R. 36 E.

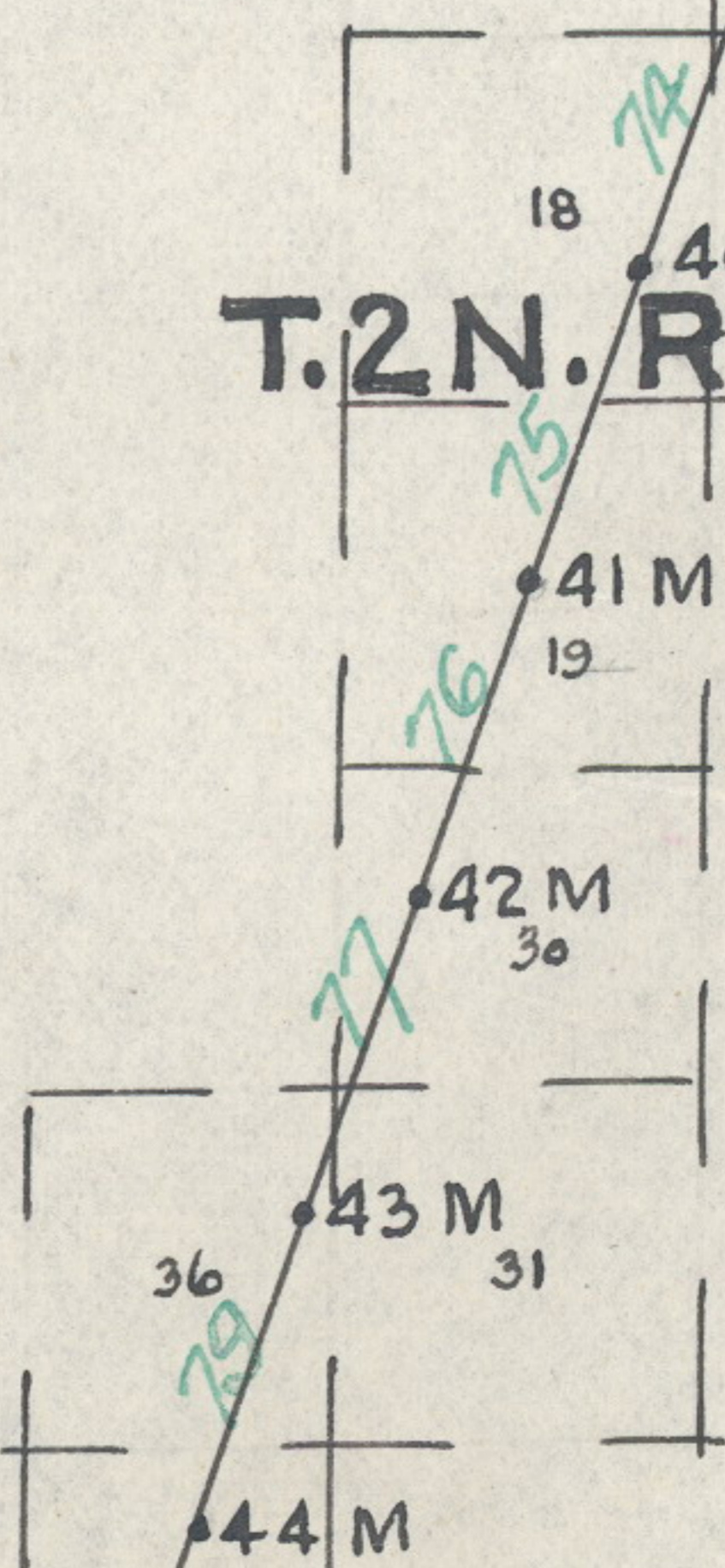


BASE LINE

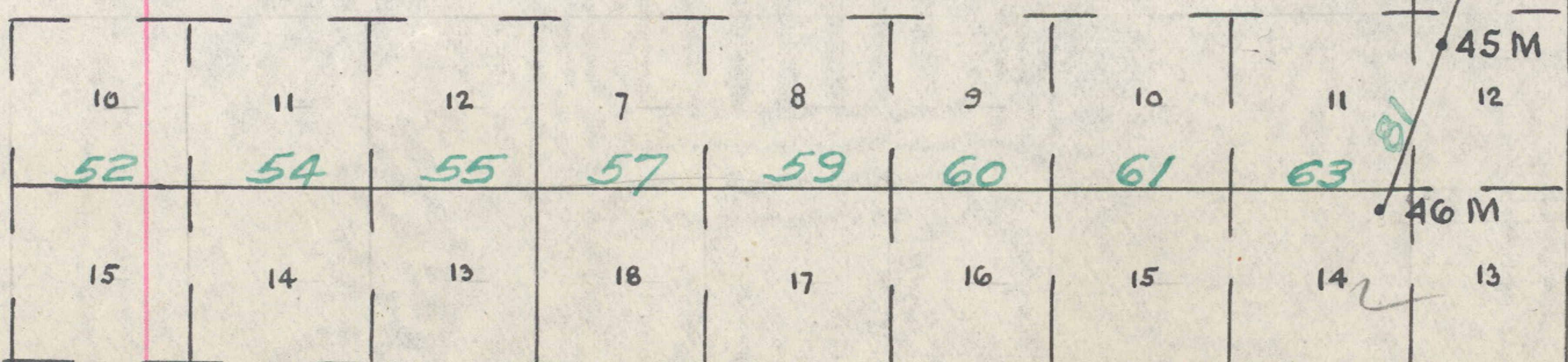


T.1 S. R. 33 E.

T.2 N. R. 36 E.



T.1 N. R. 34 E. R. 35 E.





Resurvey South Bdy. Diminished Umatilla Indian Reservation  
Subdivisions, T. 1 N., R. 35 E.

Chains

Set an iron post, 3 ft. long, 2 ins. diam., 14 ins. in the ground, surrounded by a mound of stone to depth of 26 ins., for closing cor. of secs. 11 and 14, with brass cap marked

T1NR35E  
DR  
S11  
CC — S14  
1917

from which

A pine, 20 ins. diam., bears S.56°45'W., 186 lks. dist., marked C C T 1 N R 35 E S 14 D R B T.

A pine, 20 ins. diam., bears N.55°W., 188 lks. dist., marked C C T 1 N R 35 E S 11 D R B T.

The old closing cor. of secs. 11 and 14 bears S.89°46'E., 25 lks. dist.

Land, mountainous.

Soil, shallow light loam over basalt, 2nd rate.

Timber, fir, pine and tamarack.

Undergrowth, fir, pine, willow, mountain maple and arrow-wood.

---

Resurvey East Bdy. Diminished Umatilla Indian Reservation

---

I commence at the 46 Mile Cor. and run N.20°E., retracing the 46th mile; at 40.00 chs. find no trace of the 45½ Mile Cor., set temp. cor.; at 80.00 chs. find no trace of the 45 Mile Cor., set temp. cor.; at 87.13 chs. fall 16 lks. N.70°W. of Moody's 45 Mile Cor.; at 120.00 chs. find no trace of the 44½ Mile Cor., set temp. cor., and at 157.31 chs. fall 30 lks. N.70°W. of the 44 Mile Cor.

From the 44 Mile Cor. N.20°E. retracing the 44th mile; at 40.00 chs. find no trace of the 43½ Mile Cor., set temp. cor., and at 79.60 chs. fall 23 lks. N.70°W. of the 43 Mile Cor.

From the 43 Mile Cor. N.20°E., retracing the bdy., making careful search for each cor. noted thereon, and at 430.21 chs. fall 37 lks. N.70°W. of the 37½ Mile Cor., and at 470.59 chs. fall 13 lks. N.70°W. of the 37 Mile Cor.

From the 37 Mile Cor. N.20°E., retracing the 37th mile; at 39.15 chs. intersect the 36½ Mile Cor., and at 79.15 chs. find no trace of the 36 Mile Cor., set temp. cor.; at 119.15 chs. no trace of the 35½ Mile Cor., and at 157.41 chs. fall 24 lks. S.70°E. of the 35 Mile Cor.

From the 35 Mile Cor. N.20°E., retracing the 35th mile; at 40.49 chs. fall 2 lks. N.70°W. of the 34½ Mile Cor.,

Resurvey East Bdy. Diminished Umatilla Indian Reservation

Chains

and at 79.52 chs. fall 33 lks. S.70°E. of the 34 Mile Cor.

From the 34 Mile Cor. N.20°E., retracing the 34th Mile; at 42.64 chs. find no trace of the 33 1/2 Mile Cor., set temp. cor.; at 76.64 chs. find no trace of the NE. cor. of the Reservation, set temp. cor.; thence N.36°W., 3.50 chs., N.69°W., 2.50 chs. to a point 63 lks. E. of the 33 Mile Cor.

The point for the 33rd Mile Cor. is determined by reference to the bearing trees.

At the exact cor. point

Set an iron post, 3 ft. long, 2 ins. diam., 24 ins. in the ground, for 33 Mile Cor., with brass cap marked

T3NR36E

33M

UR

1917

from which

A fir, 24 ins. diam., bears N.45°E., 5 lks. dist., marked 33 M, blazes partially overgrown, not opened.

A fir stump, 8 ins. diam., bears S.9°W., 22 lks. dist., marked B T.

At a point 58 lks. W. of the temp. NE. cor. of the Reser-

vation Set an iron post, 3 ft. long, 2 ins. diam., 24 ins. in the ground, for NE. cor. of the Reservation, with brass cap marked

T3NR36E

UR

1917

from which

A fir, 12 ins. diam., bears N.70°W., 83 lks. dist., marked U R > B T.

A pine, 5 ins. diam., bears S.67°W., 37 lks. dist., marked U R > B T.

This cor. is reported as being at the source of Wildhorse Creek, but stands on a ridge 30 ft. higher than the adjacent valley. The 33 Mile Cor. stands at the N. edge of the narrow valley or bottom land along the creek, which is now dry.

Thence

726

Resurvey East Bdy. Diminished Umatilla Indian Reservation

Chains  
 S.19°35'W., resurveying the 34th Mile.  
 Over rolling land, through timber and dense undergrowth.  
 Descend 30 ft. to  
 3.20 Dry watercourse, course NW.; ascend gradually 50 ft. to  
 16.40 Road along top of ridge, bears N.70°W. and S.70°E.  
 16.60 Fence, bears N.70°W. and S.70°E.; enter Fanny Bennett's field.  
 22.00 Fence, bears N.70°W. and S.70°E.; leave field; ascend 80 ft. to  
 32.00 Top of low ridge, bears E. and W.; descend gradually 20 ft. to  
 33.91 Apportioned distance  
 Set an iron post, 3 ft. long, 2 ins. diam., 24 ins. in the ground, for 33½ Mile Cor., with brass cap marked  
 T3NR36E  
 UR / 33½M  
 1917  
 from which  
 A pine, 5 ins. diam., bears N.72°W., 31 lks. dist., marked U.R 33½ M B T.  
 A pine, 7 ins. diam., bears N.77°30'E., 9 lks. dist., marked U R 33½ M B T.  
 Enter meadow, bears NE. and SW.  
 46.70 Fence, bears NW. and SE.; leave meadow.  
 71.41 The closing cor. of secs. 15 and 16, T. 3 N., R. 36 E., bears north, 9 lks. dist.  
 76.44 Intersect the 34 Mile Cor., which is a basalt stone, 16x12x9 ins., firmly set, marked and witnessed as described by the surveyor general.  
 At a point 1 lk. N.20°E. of the cor.  
 Set an iron post, 3 ft. long, 2 ins. diam., 24 ins. in the ground, for witness cor. to the 34 Mile Cor., with brass cap marked  
 T3NR36E  
 UR / 34M  
 WC  
 01  
 1917

Resurvey East Bdy. Diminished Umatilla Indian Reservation

Chains and raise a mound of stone, 3 ft. base, 2 ft. high,  
N.70°W. of cor.

Land, mountainous and rolling bench.  
Soil, light loam over basalt on rolling land, 1st rate;  
on mountainous land, shallow, 2nd and 3rd rate.

Timber, fir and pine.  
Undergrowth, willow, serviceberry, fir and pine.

---

S.19°29'W., resurveying the 35th Mile.

Over mountainous land, descending S. slope, 900 ft. to  
gulch.

3.28 Intersect the closing cor. of secs. 16 and 21, T. 3 N., R.  
36 E., which is a basalt stone, 14x12x10 ins., 10 ins.  
in the ground, marked X on top; raise a mound of stone,  
2 ft. base, 1½ ft. high, W. of cor.

34.87 Dry gulch, course SW.; ascend 40 ft. through dense under-  
growth, bears NE. and SW.

37.50 Top of spur, slopes W.; descend along steep slope, 20 ft. to

39.03 Intersect the 34½ Mile Cor., which is a volcanic stone,  
.16x10x6 ins., loosely set in a ring of similar stones,  
no marks are legible.

At a point 1 lk. N.20°E. of cor.

Set an iron post, 3 ft. long, 2 ins. diam., 24 ins. in the  
ground, for witness cor. to the 34½ Mile Cor., with brass  
cap marked

T3NR36E

UR / 34½M

WC

1917

from which

A fir, 6 ins. diam., bears N.23°40'E., 258 lks. dist.,  
marked U R 34½ M B T.

A fir, 12 ins. diam., bears N.11°40'E., 337 lks. dist.,  
marked U R 34½ M B T.

Thence

S.20°02'W., continuing my measurements.



728

Resurvey East Bdy. Diminished Umatilla Indian Reservation

Chains

Descend SW. slope, 150 ft. to  
 46.19 Brook, 2 lks. wide, course S.20°E.; ascend 25 ft. to  
 48.00 Top of spur, slopes SE.; descend 50 ft. to  
 50.50 Road, bears E. and W.; enter bottom land.  
 51.50 Thompson's barn bears S.70°E., 150 lks. dist.  
 53.25 Umatilla River, 125 lks. wide, course N.60°W.; ascend steep  
 N. slope.  
 60.16 Fence, bears NE. and SW.; enter recent slashing.  
 71.50 Enter timber and undergrowth, bears NE. and SW.  
 79.52 Intersect the point for 35 Mile Cor., located by reference  
 to the bearing tree, where I find supposed remains of the  
 old cor. post in the ground.

At the exact cor. point

Set an iron post, 3 ft. long, 2 ins. diam., 24 ins. in the  
ground, for 35 Mile Cor., with brass cap marked

T3NR36E

UR / 35M

1917

from which

A fir, 24 ins. diam., bears S.80°E., 8 lks. dist.,  
marks illegible, lower blaze overgrown, not opened  
(Old B.T.). I additionally mark U R 35 M.

A fir, 16 ins. diam., bears N.55°W., 24 lks. dist.,  
marked U R 35 M B T.

Land, mountainous.

Soil, light rocky loam, 2nd rate.

Timber, fir, pine and cottonwood.

Undergrowth, mountain willow, ninebark and arrowwood.

S.19°53'W., resurveying the 36th Mile.

Ascend N. slope, through heavy timber and dense undergrowth.

8.13 Point for old closing cor. of secs. 21 and 28, T. 3 N., R.  
36 E., bears East, 23 lks. dist.

This point is located by reference to the bearing trees.

At the exact cor. point

Set an iron post, 3 ft. long, 2 ins. diam., 24 ins. in the  
ground, for reconstructed old closing cor. of secs. 21

Resurvey East Bdy. Diminished Umatilla Indian Reservation

Chains

and 28; with brass cap marked  
T3NR36E

R  
CC S21 S21  
S28 S28  
U

1917

from which

A dead pine, 20 ins. diam., bears South, 12 lks. dist.,  
marked U R C C B T.

A pine, 14 ins. diam., bears N.58°W., 22 lks. dist.,  
marked U R C C B T.

13.40 Top of spur, 200 ft. above 35 Mile Cor., slopes NW.; descend  
75 ft. to

20.80 Dry gulch, course NW.; ascend 275 ft. to

28.40 Top of spur, slopes NW.; descend 100 ft.

38.55 Bottom of gulch, course NW.; a fence along same.

39.42 Apportioned distance

Set an iron post, 3 ft. long, 2 ins. diam., 24 ins. in the  
ground, for 35 1/2 Mile Cor., with brass cap marked

T3NR36E

UR / 35 1/2 M

1917

from which

A fir, 12 ins. diam., bears S.8°E., 15 lks. dist.,  
marked U R 35 1/2 M B T.

A fir, 8 ins. diam., bears N.73°W., 12 lks. dist.,  
marked U R 35 1/2 M B T.

Note: Any one of several trees in this vicinity may be the  
original bearing tree, but I fail to identify any of them  
as such.

Ascend 430 ft. to

53.00 Top of spur, slopes NW.; descend 80 ft.

60.00 Dry gulch, course NW.; ascend 200 ft.

67.75 Top of spur, slopes W.; descend 230 ft. to

78.84 Apportioned distance

Set an iron post, 3 ft. long, 2 ins. diam., 24 ins. in the  
ground, for 36 Mile Cor., with brass cap marked

T3NR36E

UR / 36M

1917

from which

Resurvey East Bdy. Diminished Umatilla Indian Reservation

Chains

A pine, 9 ins. diam., bears S.16°30'E., 140 lks.dist., marked U R 36 M B T.

A fir, 12 ins. diam., bears S.36°30'W., 141 lks.dist., marked U R 36 M B T.

Land, mountainous.  
Soil, light shallow loam over basalt, 2nd rate.  
Timber, pine, fir and tamarack.  
Undergrowth, willow, arrowwood and buckbrush.

S.19°53'W., resurveying the 37th Mile.

Descend SW. slope, 20 ft. to

1.00 Gulch, course NW., at confluence of gulch from NE.; ascend 275 ft.

13.20 Top of spur, slopes NW.; descend 300 ft. to

32.00 Dry gulch, course NW.; ascend 200 ft. to

39.42 Intersect point for 36½ Mile Cor., located by reference to the bearing tree.

At the exact cor. point

Set an iron post, 3 ft. long, 2 ins. diam., 24 ins. in the ground, for 36½ Mile Cor., with brass cap marked

T3NR36E

UR / 36½M

1917

from which

A fir, 16 ins. diam., bears N.45°W., 50 lks. dist., blazes healed over, opened only enough to disclose part of scribe marks. This tree is reported SW. of cor., but blaze indicates it stood NW.

A fir, 8 ins. diam., bears N.79°E., 25 lks. dist., marked U R 36½ M B T.

Thence

S.20°00'W., continuing my measurements

Ascend N. slope 140 ft. through timber and undergrowth.

44.40 Top of spur, slopes N.60°W.; descend 375 ft. to

59.10 Dry gulch, course NW.; ascend broken N. slope, 600 ft. to

Resurvey East Bdy. Diminished Umatilla Indian Reservation

Chains

78.57 Intersect the 37 Mile Cor., which is a basalt stone, 8x8x7 ins. above ground, firmly set, marked 37 M on N. face; from which

A pine, 15 ins. diam., bears N.56°W., 13 lks. dist., blazes healed over and not opened.

At a point 1 lk. N. of the cor.

Set an iron post, 3 ft. long, 2 ins. diam., 24 ins. in the ground, for witness cor. to the 37 Mile Cor., with brass cap marked

T3NR36E

UR / 37M

1917

from which

A fir, 12 ins. diam., bears N.70°E., 53 lks. dist.,

marked U R 37 M B T. (New B.T.)

Land, mountainous.

Soil, light loam, over basalt, 2nd rate.

Timber, fir and pine.

Undergrowth, willow, ninebark and buckbrush.

S.19°39'W., resurveying the 38th Mile.

Ascend gradually along W. slope, through dense undergrowth.

1.00 Leave undergrowth, bears E. and W.

7.00 Top of spur, slopes W.; descend 330 ft.

19.50 Dry gulch, course W.; ascend 50 ft.

28.00 Top of spur, slopes W.; descend 380 ft. to

40.38 Intersect the 37 1/2 mile cor., which is a basalt stone, 18x12x6 ins., on top of the ground, marked M on N. and U R on W. face; from which

A pine, 28 ins. diam., bears S.42°E., 35 lks. dist.,

blazes healed over, not opened. This tree is re-

ported S.20°W., 40 lks. dist., but facing of blazes

indicate the cor. stone is in its original position.

At a point 1 lk. N. of the cor.

Set an iron post, 3 ft. long, 2 ins. diam., 24 ins. in the

232

Resurvey East Bdy. Diminished Umatilla Indian Reservation

Chains

ground, for witness cor. to the 37 1/2 Mile Cor., with brass cap marked

T2NR35E

UR / 37 1/2 M

WC

1917

from which

A pine, 12 ins. diam., bears N.54°W., 72 lks. dist.,

marked U R 37 1/2 M B T.

Thence

S.20°03'W., continuing my measurements

Continue descent 35 ft. to

41.40 Brook, 2 lks. wide, course W.; ascend 100 ft. to

45.65 Top of spur, slopes NW.; descend 50 ft.

49.00 Dry gulch, course N.30°W.; ascend 585 ft.

64.40 Top of spur, slopes NW.; leave timber and undergrowth; descend SW. slope 425 ft. to

79.49 Apportioned distance

Set an iron post, 3 ft. long, 2 ins. diam., 24 ins. in the ground, for 38 Mile Cor., with brass cap marked

T2NR36E

UR / 38 M

1917

from which

A pine, 14 ins. diam., bears S.50°W., 206 lks. dist.,

marked U R 38 M B T.

A pine, 14 ins. diam., bears S.33°E., 306 lks. dist.,

marked U R 38 M B T.

Land, mountainous.

Soil, light loam over basalt, 2nd rate.

Timber, fir and pine.

Undergrowth, ninebark, willow and huckleberry.

S.20°03'W., resurveying the 39th Mile.

Over mountainous land, descending SW. slope 350 ft. to

9.70 Brook, 2 lks. wide, course NW.; ascend 575 ft. to top of

Resurvey East Bdy. Diminished Umatilla Indian Reservation

Chains

Soil, shallow light loam over basalt, 3rd rate.  
Timber, small growth of fir and yellow pine.  
Undergrowth, willow, ninebark, arrowwood and cherry.

November 22, 1917.

L. E. Wilkes  
U. S. Surveyor

For Final Certificate of U. S. Surveyor see Book "E"  
of this Group.

APPROVAL

Office of U. S. Surveyor General,  
Portland, Oregon, August 26, 1918.

The foregoing field notes of the Resurvey of the East, South, West and western three miles of the North Boundary of the Diminished Umatilla Indian Reservation, Oregon, executed by L. E. Wilkes, U. S. Surveyor, under his special instructions dated February 20, 1917, having been critically examined, and the necessary corrections and explanations made, the said field notes, and the surveys they describe, are hereby approved.

Edward A. Worth  
U. S. Surveyor General