

# FIELD NOTES

165

Of the survey of the

*Exterior*

Lines of

*the diminished Umatilla  
Reservation*

Willamette Meridian,

Oregon, as surveyed by

*Jas. G. Carrin &  
Geo. E. Poland*

U. S. Deputy Surveyor, under his Contract No.

dated

*May 4<sup>th</sup>* 188*8* *1887* ✓

Survey commenced,

*Oct 24<sup>th</sup>*

188*7*

Survey completed,

*November 4<sup>th</sup>*

188*7*

## NAMES AND DUTIES OF ASSISTANTS,

<i>L. J. Woolley</i>	, Compassman.
<i>E. L. Perry</i>	, Chainman.
<i>Guy Davis</i>	, Chainman.
<i>J. R. Hadley</i>	, Chainman.
<i>C. L. Raper</i>	, Chainman.
<i>C. Moore</i>	, Axeman.
<i>J. W. Gordon</i>	, Axeman.
	, Flagman.

PRELIMINARY OATHS OF ASSISTANTS.

We, \_\_\_\_\_

*G. S. Perry, Guy Davis, J. R. Madley, C. Kaper*

do solemnly swear that we will faithfully execute the duties of Chain Carriers, that we will level the chain over even and uneven ground, and plumb the tally pins, either by sticking or dropping the same; that we will report the true distance to all notable objects, and the true length of all lines that we will assist in measuring, to the best of our skill and ability, and in accordance with the instructions given us in

the survey of the \_\_\_\_\_

*Exterior*

lines of \_\_\_\_\_

*Diminished*

*Reservation*

Willamette Meridian, Oregon.

\_\_\_\_\_, Chainman.

*G. S. Perry*

\_\_\_\_\_, Chainman.

*Guy Davis*

\_\_\_\_\_, Chainman.

*J. R. Madley*

\_\_\_\_\_, Chainman.

*C. Kaper*

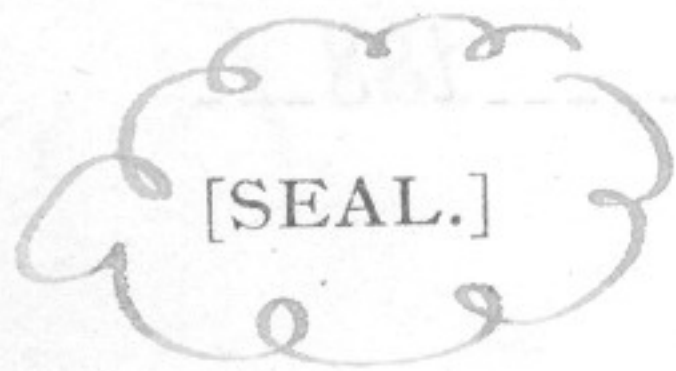
Subscribed and sworn to before me, this \_\_\_\_\_

*Twenty fourth*

day of \_\_\_\_\_

*October*

188\_\_\_\_



[SEAL.]

*James E. Holand*

*U.S. Dept. Surveyor*

We, \_\_\_\_\_

*C. Moses, J. H. Stenison*

and \_\_\_\_\_

do solemnly swear that we will well and truly perform the duties of Axemen in the establishment of corners and other duties, according to instructions given us, and to the best of our skill and ability,

in the survey of the \_\_\_\_\_

*Exterior lines of*

*the Diminished Reservation*

Willamette Meridian, Oregon.

\_\_\_\_\_, Axeman.

*C. Moses*

\_\_\_\_\_, Axeman.

*J. H. Stenison*

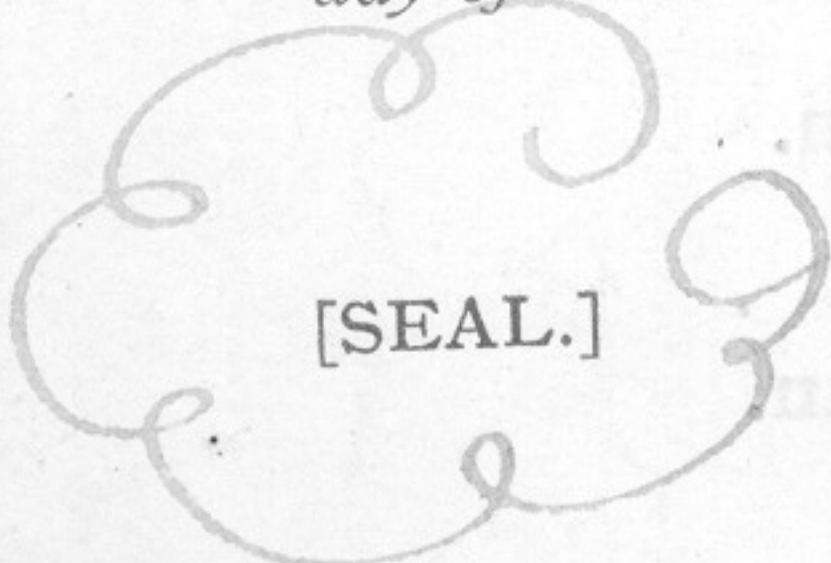
Subscribed and sworn to before me, this \_\_\_\_\_

*Twenty fourth*

day of \_\_\_\_\_

*October*

188\_\_\_\_



[SEAL.]

*James E. Holand*

*U.S. Dept. Surveyor*

R33E

R34E *Index*

R35E

R36E

168

T4N

169

T4N

T3N

T3N

T2N

T2N

T1N

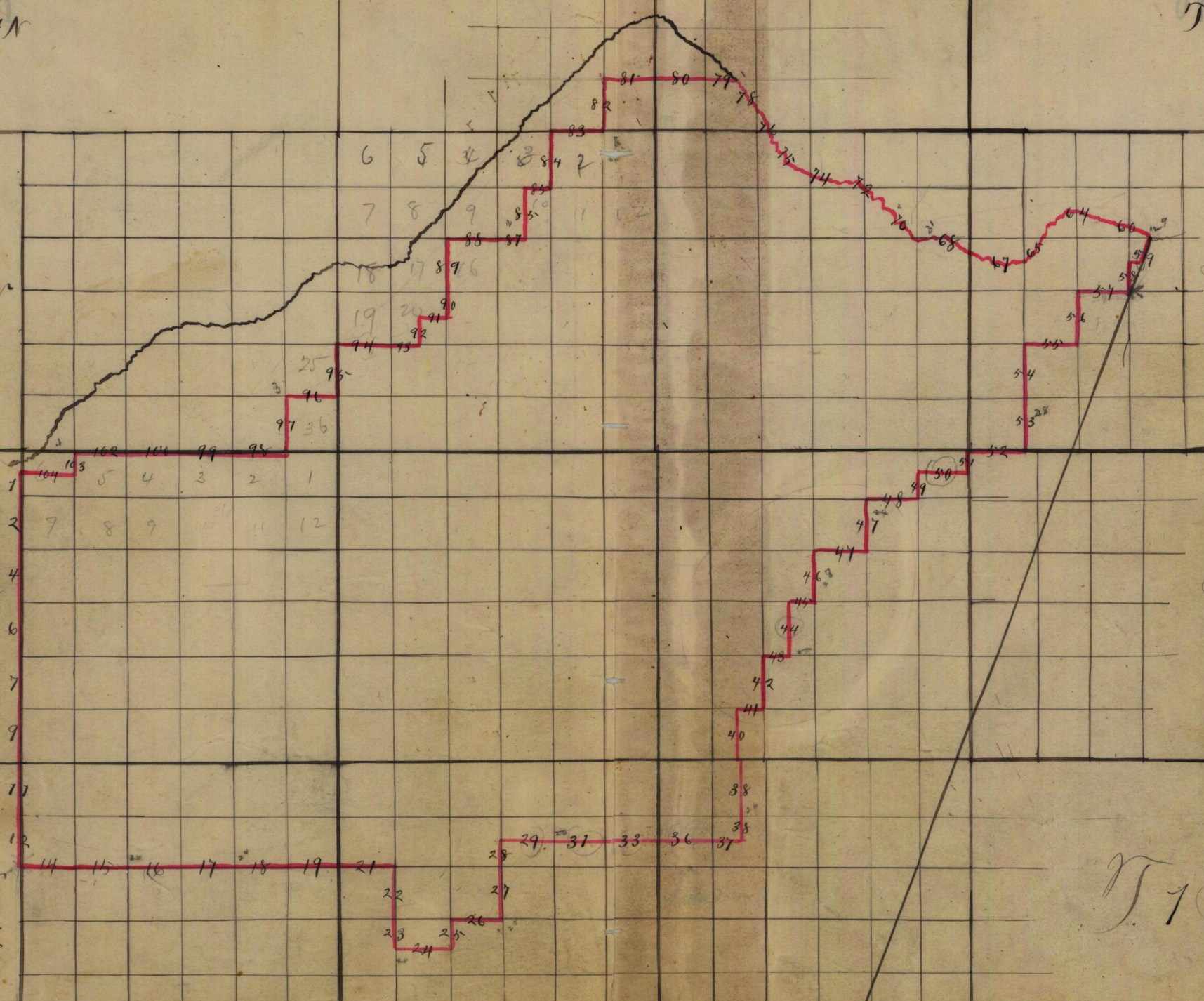
T1N

R33E

R34E

R35E

R36E



Exterior of T. Quimish R. Reservation  
 Willamette Meridian, Oregon.

(8093-10 M.)

	Thence East on true line through center of sec 1	
		Wa 20 1/2° East
550	Gulch course N. W.	- 50
3500	Top of ridge bears N. W.	+ 250
4000	Set basalt stone 10 x 10 x 10 ins 6 ins in the ground for 1/4 sec cor. marked S. R. 1/4 on N. face raised mound of stone over it	
5600	Canon course N. W.	- 100
6600	Top of ridge bears N. W.	+ 200
7300	Gulch bears N. W.	- 100
	Ascend	
7940	Intersect E. bdy of Township 4.00 chains S of 1/4 sec. cor. on N. bdy of sec 6 T. 2 N. R. 36 E. and set basalt stone 14 x 12 x 10 ins 10 ins in the ground for 1/4 sec. closing cor. marked C. C. 1/4 on N. and S. faces and raised mound of stone	

Exterior of T. Diminished R. Reservation  
Willamette Meridian, Oregon.

(M 01-200)

around it  
Land very rough & mountainous  
79.40 chs Soil 3rd rate, good grass.

Thence North retracing Township  
line bet sees 1<sup>nd</sup> & 6

Wa Wa 2 1/2 East

400 1/4 sec. cor. on E bdy sec 6, which  
is a basalt stone in a mound of  
stone and which I mark D.R. on  
W. face.

1500 Gulch course W. 50

3320 Closing cor to Townships 2 North  
Rgs 35<sup>th</sup> & 36<sup>th</sup>, which is a stone  
in mound of stone and which I mark  
D.R. on W. face

Land rough and mountainous  
3320 chs. Soil 2nd rate and rocky.  
Good grass

222

Exteriors of T. Quinnishod R. Reservation  
Willamette Meridian, Oregon.

(8093-10 M.)

Thence East retracing  
Township line bet sec 31<sup>and</sup> 32  
Tps 2<sup>and</sup> 3 North R 36 East  
to 18° 45' E

110 Cor to Townships 3 North  
Ranges 35<sup>and</sup> 36 East which  
is a basalt stone in mound of  
stone and which I mark Q. R.  
on N. face

1660 Top of ridge to 7600  
Descend steep mountain side

4140 1/4 sec. cor. on S bdy sec 31  
T. 3 N. R. 36 E which is a stone  
in a mound of stone and marked  
Q. R. on N. face

6090 Meacham creek 60 ft wide course

7090 Q. R. and Rail road course N. and S.

8140 Cor to sec 31<sup>and</sup> 32 T. 3 N. R. 36 E  
which is a stone in mound of  
stone which I mark Q. R. on N. face  
mountainous 8140 chs  
land very rough, soil 2nd rate

Exterior of ~~T.~~ <sup>Unfinished</sup> ~~R.~~ Reservation  
Willamette Meridian, Oregon.

Thence North retracing line  
bet. sec. 31<sup>rd</sup> & 32

Wa 18° East

1000 Meacham creek 50<sup>th</sup> <sup>wide</sup> course N.E.

1900 Same " " " N.W.

2950 Same " " " N.E.

4000 1/4 Sec. cor. which is a post

set firmly in the ground which  
I mark Q.R. on N.W. face, from which

A Fir 36 ins in diam. to S 85°  
E dist. 20<sup>th</sup> which I mark Q.R. B.T

A pine 30 ins in diam. to S 85°  
dist 15<sup>th</sup> which I mark Q.R. B.T

4450 Meacham creek 80<sup>th</sup> <sup>wide</sup> course N.W.

5750 Same " " " N.E.

6150 Same " " " N.W.

8000 Go to sec. 29, 30, 31<sup>rd</sup> & 32 which is  
a post in mound of stone which I  
mark Q.R. on N.W. face,  
from which

A pine 16 ins diam. bears S 25° W

### FINAL OATHS FOR SURVEYS.

A list of the names of the individuals employed by James P. Carrin  
and James C. Roland, U. S. Deputy Surveyor, to assist in  
 running, measuring and marking the lines and corners described in the foregoing field  
 notes of the survey of the Exterior  
Umatilla Reservation lines of the Diminished  
Willamette Meridian, Oregon,  
 showing the respective capacities in which they acted:

- L. J. Woolley, Compassman.
- E. G. Perry, Chainman.
- Guy Davis, Chainman.
- J. R. Hadley, Chainman.
- C. Raper, Chainman.
- H. Moses, Axeman.
- J. H. Henderson, Axeman.
- \_\_\_\_\_, Flagman.

### FINAL OATHS OF ASSISTANTS.

We hereby certify that we assisted James P. Carrin and  
James C. Roland, U. S. Deputy Surveyor, in surveying all  
 those parts or portions of the Exterior  
lines of the Diminished  
Umatilla Reservation Willamette Meridian, Oregon,  
 as are represented in the foregoing field notes as having been surveyed by him and under  
 his direction; and that said survey has been in all respects, to the best of our knowledge  
 and belief, well and faithfully surveyed, and the corner monuments established, according  
 to the instructions furnished by the U. S. Surveyor General of Oregon.

- L. J. Woolley, Compassman.
- E. G. Perry, Chainman.
- Guy Davis, Chainman.
- J. R. Hadley, Chainman.
- C. Raper, Chainman.
- H. Moses, Axeman.
- J. H. Henderson, Axeman.
- \_\_\_\_\_, Flagman.

Subscribed and sworn to before me, this fourth day of  
November 1887

[SEAL.] James C. Roland  
U. S. Deputy Surveyor



FINAL OATH OF DEPUTY SURVEYORS

We James P. Currier and James E. Holand  
United States Deputy Surveyors, do solemnly swear that in pursuance of

instructions received from Douglas H. Taylor

U. S. Surveyor General for Oregon, bearing date of the 20<sup>th</sup>

day of August 1888, I have well, faith-

fully and truly, in my own proper person, and in strict conformity with the instructions furnished by the U. S. Surveyor General for Oregon, the Surveying Manual, and the laws of the United States, surveying all those

parts or portions of the Exterior bdy. of the Diminished Reservation

Willamette Meridian, in the State of Oregon, as are represented in the foregoing field notes as having been surveyed by me and under my directions; and I do further solemnly swear that all the corners of said survey have been established and perpetuated in strict accordance with the Surveying Manual, printed instructions, the special written instructions of the U. S. Surveyor General for Oregon, and in the specific manner described in the field notes, and that the foregoing are the true field notes of such survey, and should any fraud be detected I will suffer the penalty of perjury under the provisions of an Act of Congress approved August 8, 1846.

James P. Currier, James E. Holand  
U. S. Deputy Surveyors

Subscribed and sworn to before me, this 23<sup>rd</sup>

day of February 1888

Allen Woodcock  
Notary Public  
for Oregon



## Office U. S. Surveyor General,

Portland, Oregon, October 6<sup>th</sup> - 1888The ~~following~~ <sup>foregoing</sup> Field Notes of the Survey of the \_\_\_\_\_of the Boundary Lines  
of the Diminished \_\_\_\_\_\_\_\_\_\_ Unatilla Indian  
Reservation Oregon  
executed by James P. Curran and James O. Nolan  
Special U. S. Dept. Surveyors.  
under his Contract No. \_\_\_\_\_, dated May 4\_\_\_\_\_ 1887, having been critically examined, the  
necessary corrections and explanations made, the said Field Notes  
and the survey they describe, are hereby approved.Douglas W. Taylor  
Surveyor General.