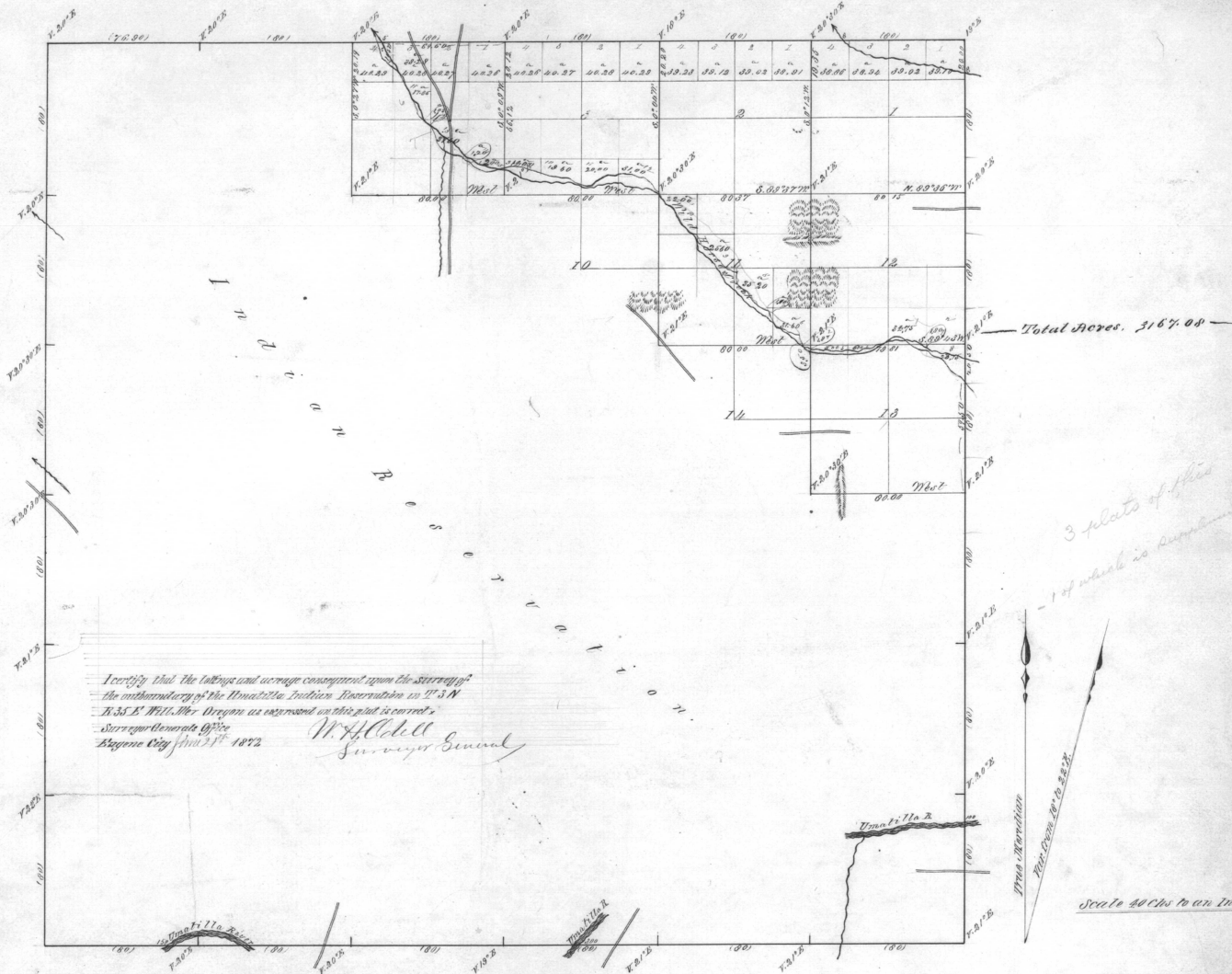


Township No. 3 North, Range No. 35 East Will. Mer.

4319



I certify that the bearings and acreage contained upon the foregoing  
 the authenticity of the Umatilla Indian Reservation in T<sup>3</sup> N  
 R<sup>35</sup> E Will. Mer. Oregon as represented on this plat is correct.  
 Surveyor General's Office  
 Eugene Ore. April 21<sup>st</sup> 1882

*W. H. Odell*  
 Surveyor General

Lines	Contractor	Contract		Acre surveyed			Completed
		No.	Date	Sqs	Chs	Trs	
Subdivisions	W. H. Odell	124	July 2 <sup>nd</sup> 1882	14	00	19	Aug 23 <sup>rd</sup> 1882
	Total Acres 2734.83						

The above Map of fractional Township No. 3 North, Range No. 35 East Will. Mer. Oregon, is strictly conformable to the original filed notes of the survey, filed on file in this office, which have been examined and approved by the Surveyor General's Office, Eugene Ore. Feb 18<sup>th</sup> 1887

*E. L. Applegate*  
 Surveyor Gen. of Oregon