

## FIELD NOTES

Of the survey of the Reservation Boundary

Lines of

Willamette Meridian, Oregon,

as surveyed by James P. Carrin and James Edoland

their special

U. S. Deputy Surveyor, under his Contract No. \_\_\_\_\_

dated May 4<sup>th</sup>, 1887

Survey commenced, June 15<sup>th</sup>, 1887

Survey completed, November 5<sup>th</sup>, 1887

NAMES AND DUTIES OF ASSISTANTS.

\_\_\_\_\_, Compassman.  
J. M. Henry, Chainman.  
J. S. Medley, Chainman.  
W. H. Medley, Chainman.  
Frank Belshaw, Chainman.  
R. Rush, Axman.  
A. Keatch, Axman.  
\_\_\_\_\_, Flagman.



PRELIMINARY OATHS OF ASSISTANTS.

We, *W. Henry, J. S. Medley, W. H. Medley and Frank Belshaw*

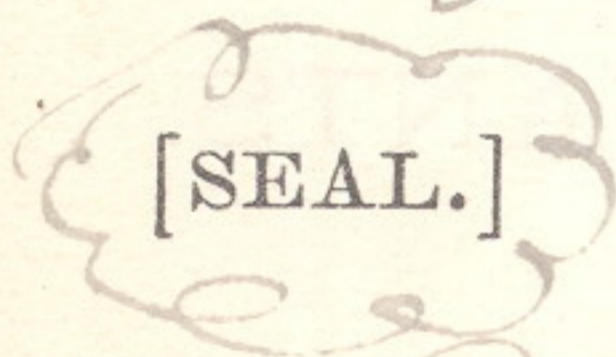
do solemnly swear that we will faithfully execute the duties of Chain Carriers; that we will level the chain over even and uneven ground, and plumb the tally pins, either by sticking or dropping the same; that we will report the true distance to all notable objects, and the true length of all lines that we will assist in measuring, to the best of our skill and ability, and in accordance with the instructions given us in the survey

of the *Reservation Boundary* lines of

*Willamette Meridian, Oregon.*

*J. W. Henry*, Chainman.  
*J. S. Medley*, Chainman.  
*W. H. Medley*, Chainman.  
*Frank Belshaw*, Chainman.

Subscribed and sworn to before me this *15<sup>th</sup>* day of *June*, 188*7*



*James E. Noland*  
U. S. Dept. Surveyor

We, *R. Rush* and *H. Neatch*, do solemnly

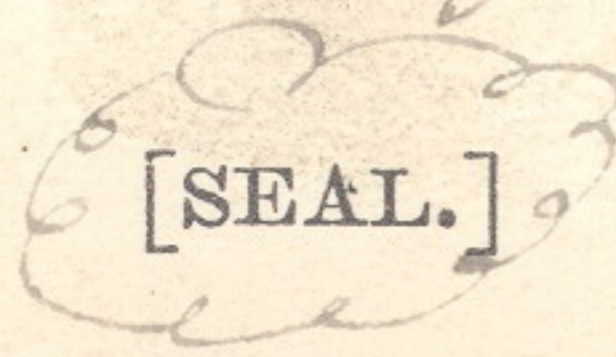
swear that we will well and truly perform the duties of Axmen in the establishment of corners and other duties, according to instructions given us, and to the best of our skill and ability, in the survey of the

*Reservation Boundary*

*Willamette Meridian, Oregon.*

*R. Rush*, Axman.  
*H. Neatch*, Axman.

Subscribed and sworn to before me this *Fifteenth* day of *June*, 188*7*



*James E. Noland*  
U. S. Dept. Surveyor



R 32 E

R 33 E

T 4 N. R 34 E

R 35 E

R 36 E

63

T 3 N.

T 2 N.

T 1 N.

BASE LINE

T 1 S

T 2 S

62

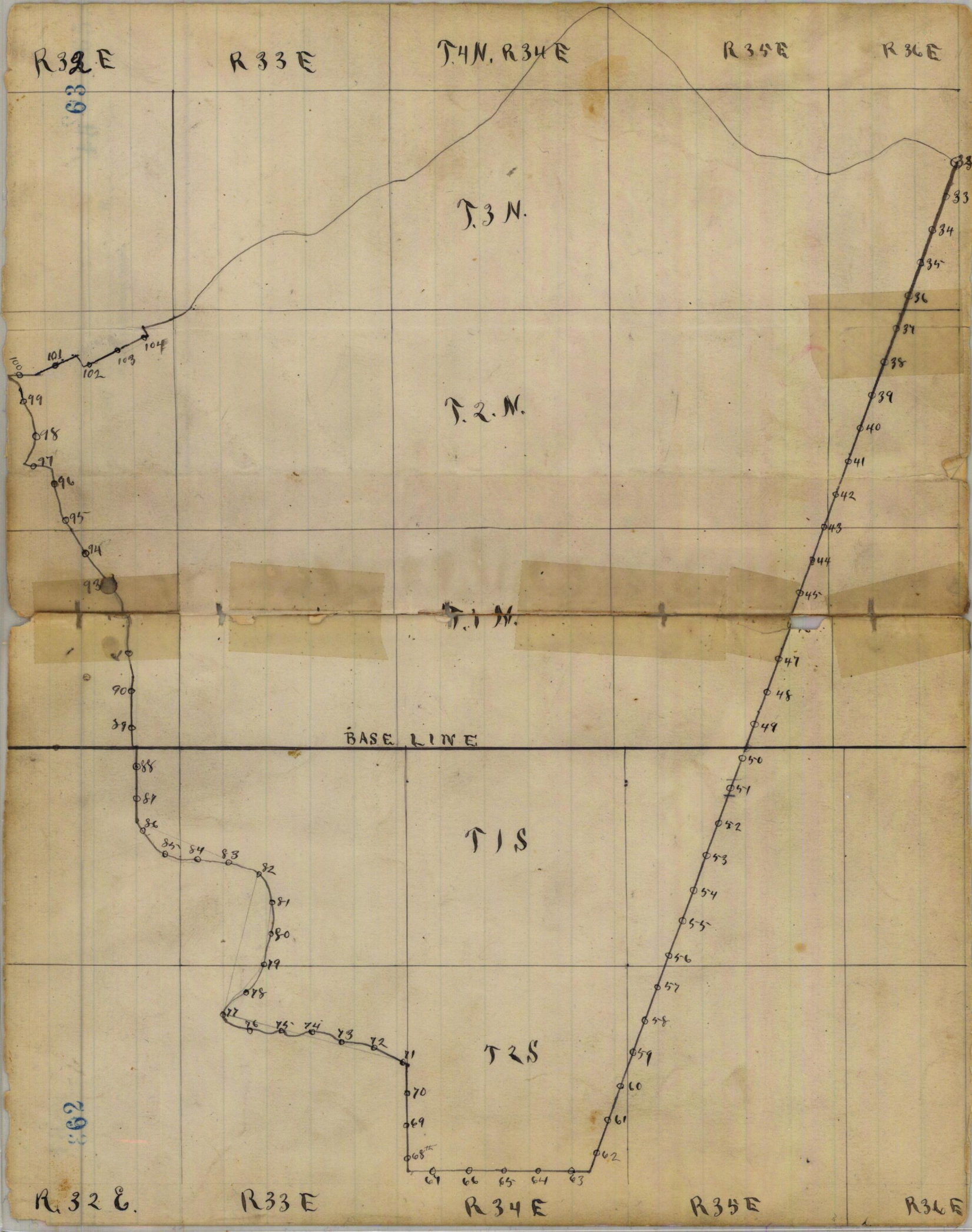
R 32 E.

R 33 E

R 34 E

R 35 E

R 36 E





25  
98

# Reservation Boundary

of T. \_\_\_\_\_ R. \_\_\_\_\_

Willamette Meridian, Oregon.

(8093-10 M.)

South 20° W on 56<sup>th</sup> Mile  
Var 19° 45' E

descend

- 1700 Ravine -500  
-500
- 2925 McKay Creek 15 ft wide W -2000  
-2000
- 4000 Set a Basalt stone 10x10x10 ins  
6 ins in the ground for 1/2 mile  
stone marked 1/2 mile N + U. R.  
on W faces raised stone mound <sup>around it</sup>
- 4300 Top of sharp ridge course N +500  
+500
- 6300 Creek 10 ft wide course N. W. -500  
-500
- 8000 Set a Basalt stone 20x12x12 ins  
15 ins. in the ground for 56<sup>th</sup> mile  
Marked 56<sup>th</sup> mile N + U. R. on W  
faces, raised stone mound over it 80 ft  
Land very rough + Manulimans  
Soil rocky 4<sup>th</sup> gate  
Dine fir + Lam arack timber of  
poor quality Inaccessible for  
milling purposes



# Reservation Boundary

26

99

of T.

R.

Willamette Meridian, Oregon.

Sawtooth<sup>20<sup>W</sup></sup> 5-7<sup>th</sup> Mile

Var 21° 45' E

3150 Top of Mountain + 2500

4000 A fir 5 ins in diam. which I  
marked for 1/2 M. Cor. 1/2 M on  
N + U. R. on N faces. From which  
a pine 4 ins. in diam to N 18<sup>W</sup>  
dist 7 lks. A pine 6 ins. in diam  
to S 85° E dist 13 lks each marked  
1/2 M. U. R. B. T.

8000 A black pine 10 ins in diam. w<sup>h</sup>  
ich I marked for 5-7<sup>th</sup> Mile  
Cor. 5-7 M on N + U. R. on W. face  
From which <sup>a fir</sup> 6 ins in diam. to N  
10<sup>W</sup> dist 9 lks. A fir 8 ins in diam  
to N 25° E dist 13 lks. A fir  
6 ins in diam to S 38° E dist 23 lks  
A fir 24 ins in diam to S 40<sup>W</sup>  
dist 28 lks - each marked,  
5-7 M. U. R. B. T. Land mtns 80. ch<sub>3</sub>  
Soil 4<sup>th</sup> rate Pine, fir & Fir timber



27  
100

# Reservation Boundary

of T. \_\_\_\_\_ R. \_\_\_\_\_

Willamette Meridian, Oregon.

(8093-10 M.)

South 20° W on 58<sup>th</sup> Mile  
Var 20° 30' E

100 Ravine Course N.W. -500-500

Ascend through dense brush to  
40.00 Edge of prairie set a post 48x48  
4 ins 2 ft in the ground for 1/2 M.  
ile Cor. Marked 1/2 M. A pine 6  
ins in diam to N 50° E dist 10 lks  
A pine 4 ins in diam to S 55° W 15 lks  
dist each marked 1/2 M. U.R.B.D.

8000 I found Woody's marks. 175 lks E.  
of line + Making the true course  
of this 1/2 mile S 17° 30' W. I marked  
a pine 34 ins in diam 58 M on N + U.R.  
an W. for 58<sup>th</sup> mile Cor. From which a pine  
30 ins in diam to S 80° W dist 10 lks. A pine  
24 ins in diam to S 15° W dist 2 lks  
each marked 58 M. U.R.B.D.

Land rolling - Soil 3<sup>rd</sup> grade  
Heavy pine fir + Tamarack  
timber with <sup>Dense</sup> underbrush 80.00 chs  
June 21-1887



Reservation Boundary <sup>28</sup>

of T.

R.

101

Willamette Meridian, Oregon.

South 20° W on 5<sup>9</sup>th Mile  
Var 19° 15' E

940 Ravine - 400

4000 Set a post 4 1/2 x 4 x 4 ins 24 ins in  
The ground for 1/2 mile post-  
marked 1/2 M on N & U. R. on  
W. faces. From which a pine  
4 ins in diam to S 80° W dist 7  
links a pine 16 ins in diam  
to N 75° E dist 13 lks marked 1/2  
M. U. R. B. T. on each tree

6300 Canoe Course N. W. - 500

8000 To a <sup>in place</sup> basal stone 5 x 5 x 3 ft above  
ground - which I marked  
59 M on N & U. R. on W & a + on  
<sup>at exact corner point.</sup>  
Top, from which a pine 16 ins in  
diam to S 25° E dist 69 lks <sup>marked 59 M U. R. B. T.</sup> no  
other tree in limits

Land maintained <sup>8000</sup> Soil 3rd  
rate, pine & fir timber with  
dense underbrush of same



29 Reservation Boundary

1.02

of T. R.

Willamette Meridian, Oregon.

(8093-10 M.)

South 20° W on 60<sup>th</sup> Mile  
Var 17° E

40.00 A Red fir 12 ins in diam which  
I marked for 1/2 mile cor 1/2 m on  
N + N. R. on W from which a  
fir 14 ins in diam bears N. 65°  
W dist - 47 lks a fir 14 ins in diam  
br N 65° E dist - 53 lks each m-

at the 1/2 m. N. R. B.P.

46.50  
47.00 9 m top line bet S. 2 S R 34 + 35 E +200  
Bluff of rock +200

53.50 Gulch course W -300 -300

62.00 Intersect N. day. of sec. 24 T. 2.  
S. R. 34 E. 6.00 chs W of cor on T. p.  
line

63.00 Top of ridge +300 +300

77.00 Canoe course W -100 -100

80.00 Set a box set stone 16 x 12 x 8 ins  
10 ins in the ground for 60<sup>th</sup>  
mile cor. mtd 60 m. N. R. gared  
Stone mound over it. Land  
Mauritanians <sup>80 chs</sup> scattering pines.



FINAL OATHS FOR SURVEYS.

162 A list of the names of the individuals employed by James P. Currier and James E. Roland, U. S. Deputy Surveyor, to assist in running, measuring, and marking the lines and corners described in the foregoing field notes of the survey of the Reservation Boundary lines of

Willamette Meridian, Oregon, showing the respective capacities in which they acted:

- J. W. Henry, Compassman.
J. S. Medley, Chainman.
W. H. Medley, Chainman.
Frank Belshaw, Chainman.
B. Rush, Axman.
H. Veatch, Axman.
Flagman.

FINAL OATHS OF ASSISTANTS.

We hereby certify that we assisted James P. Currier and James E. Roland, U. S. Deputy Surveyor, in surveying all those parts or portions of the Reservation Boundary of

Willamette Meridian, Oregon, as represented in the foregoing field notes as having been surveyed by him and under his direction; and that said survey has been in all respects, to the best of our knowledge and belief, well and faithfully surveyed, and the corner monuments established, according to the instructions furnished by the U. S. Surveyor General of Oregon.

- J. W. Henry, Compassman.
J. S. Medley, Chainman.
W. H. Medley, Chainman.
Frank Belshaw, Chainman.
B. Rush, Axman.
H. Veatch, Axman.
Flagman.

Subscribed and sworn to before me this Fifth day of November, 1887.

[SEAL.]

James E. Roland U. S. Deputy Surveyor



## FINAL OATH OF DEPUTY SURVEYOR.

We James P. Curran and James E. Poland, United States  
 Deputy Surveyor, do solemnly swear that in pursuance of instructions  
 received from Douglas H. Taylor, U. S.  
 Surveyor General for Oregon, bearing date of the 13<sup>th</sup>  
 day of May, 1887, I have well, faithfully,  
 and truly, in ~~my~~ <sup>our</sup> own proper person, and in strict conformity with the  
 instructions furnished by the U. S. Surveyor General for Oregon, the  
 Surveying Manual, and the laws of the United States, surveying all  
 those parts or portions of Reservation Boundary

Willamette Meridian, in the State of Oregon, as are represented in the  
 foregoing field notes as having been surveyed by me and under my  
 directions; and I do further solemnly swear that all the corners of said  
 survey have been established and perpetuated in strict accordance with  
 the Surveying Manual, printed instructions, the special written instruc-  
 tions of the U. S. Surveyor General for Oregon, and in the specific man-  
 ner described in the field notes, and that the foregoing are the *true* field  
 notes of such survey, and should any fraud be detected I will suffer the  
 penalty of perjury under the provisions of an act of Congress approved  
 August 8, 1846.

James P. Curran, & James E. Poland  
 U. S. Deputy Surveyor.

Subscribed and sworn to before me this Fifteenth  
 day of February, 1888

Alex Woodcock  
 Notary Public  
 for Oregon



## Office of U. S. Surveyor General,

Portland, Oregon, Sept 20<sup>th</sup>, 1888

The ~~following~~ <sup>foregoing</sup> Field Notes of the Survey of ~~the~~  
 a portion of Boundary line  
 of the Umatilla Indian  
 Reservation in Oregon  
 executed by James P. Currier and James E. Nola  
 Special Joint U. S. Dept Surveyors.  
 under ~~his~~ Contract No. ...., dated May  
 4<sup>th</sup> ....., 1887, having been critically examined,  
 the necessary corrections and explanations made, the  
 said Field Notes and the survey they describe, are  
 hereby approved.

Douglas W. Taylor -

Surveyor General.