



4-679

FIELD NOTES

of

RESURVEY OF THE ORIGINAL UMATILLA INDIAN RESERVATION

BOUNDARY FROM THE 56½ MILE COR. TO THE SW. COR. THEREOF;

also

RESURVEY PORTION OF NORTH AND EAST BOUNDARIES AND

RETRACEMENT, RESURVEY AND SURVEY OF SUBDIVISIONAL LINES

in

TOWNSHIP NO. 2 SOUTH, RANGE NO. 34 EAST

Of the Willamette Meridian,

In the State of Oregon

EXECUTED BY

L. E. Wilkes.

In the capacity of U. S. Surveyor, under Special Instructions dated Feb. 20, 1917, issued by the United States Surveyor General to govern surveys included in Group No. 29, which were approved by the Commissioner of the General Land Office, Apr. 11, 1917, and Assignment Instructions dated May 3, 1917

Survey commenced September 5, 1917

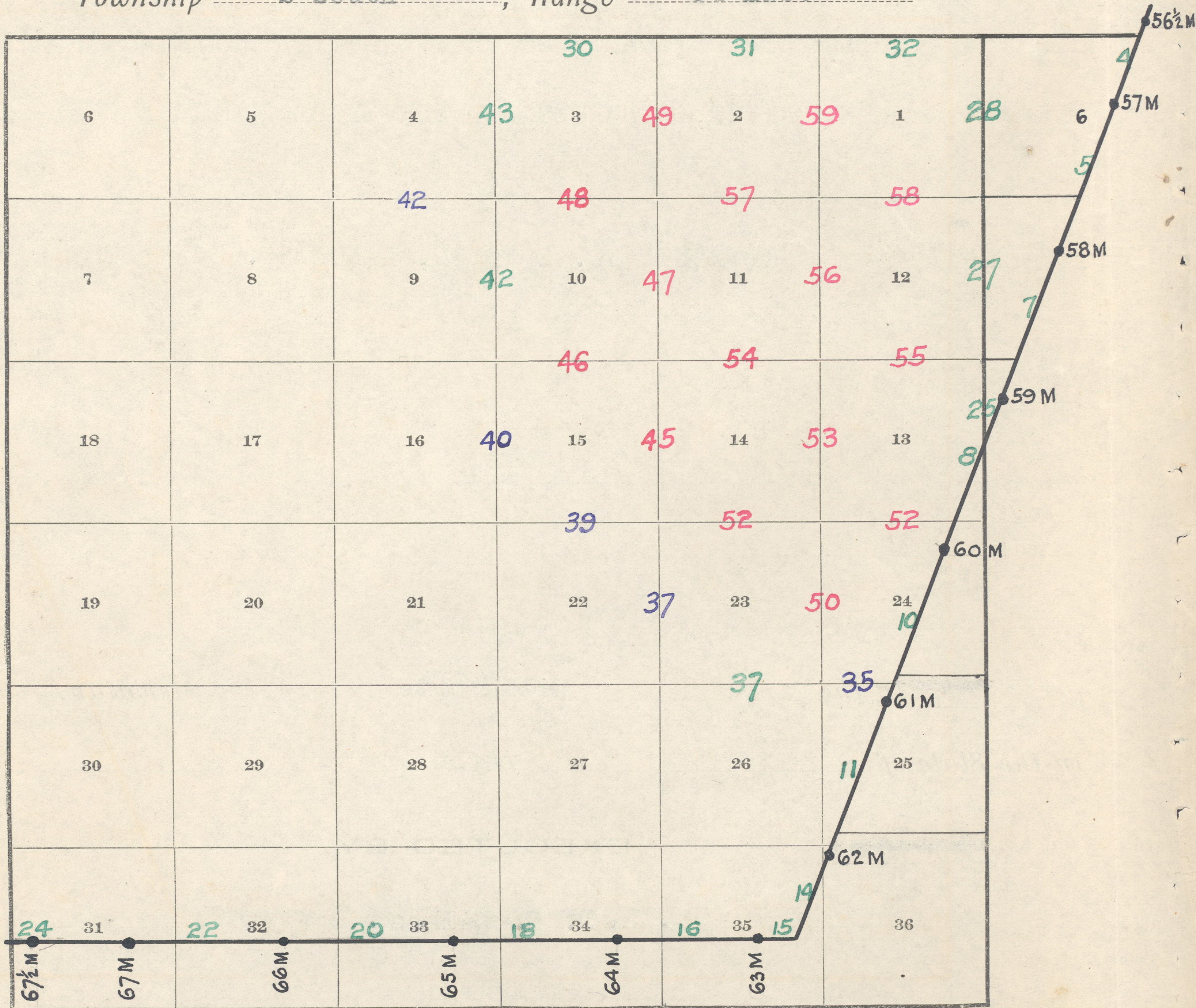
Survey completed October 31, 1917

ACCEPTED BY THE HON. COMMISSIONER G. L. O. May 10, 1919

FIELD NOTES

INDEX DIAGRAM.

Township 2 South, Range 34 East



Red indicates original surveys.

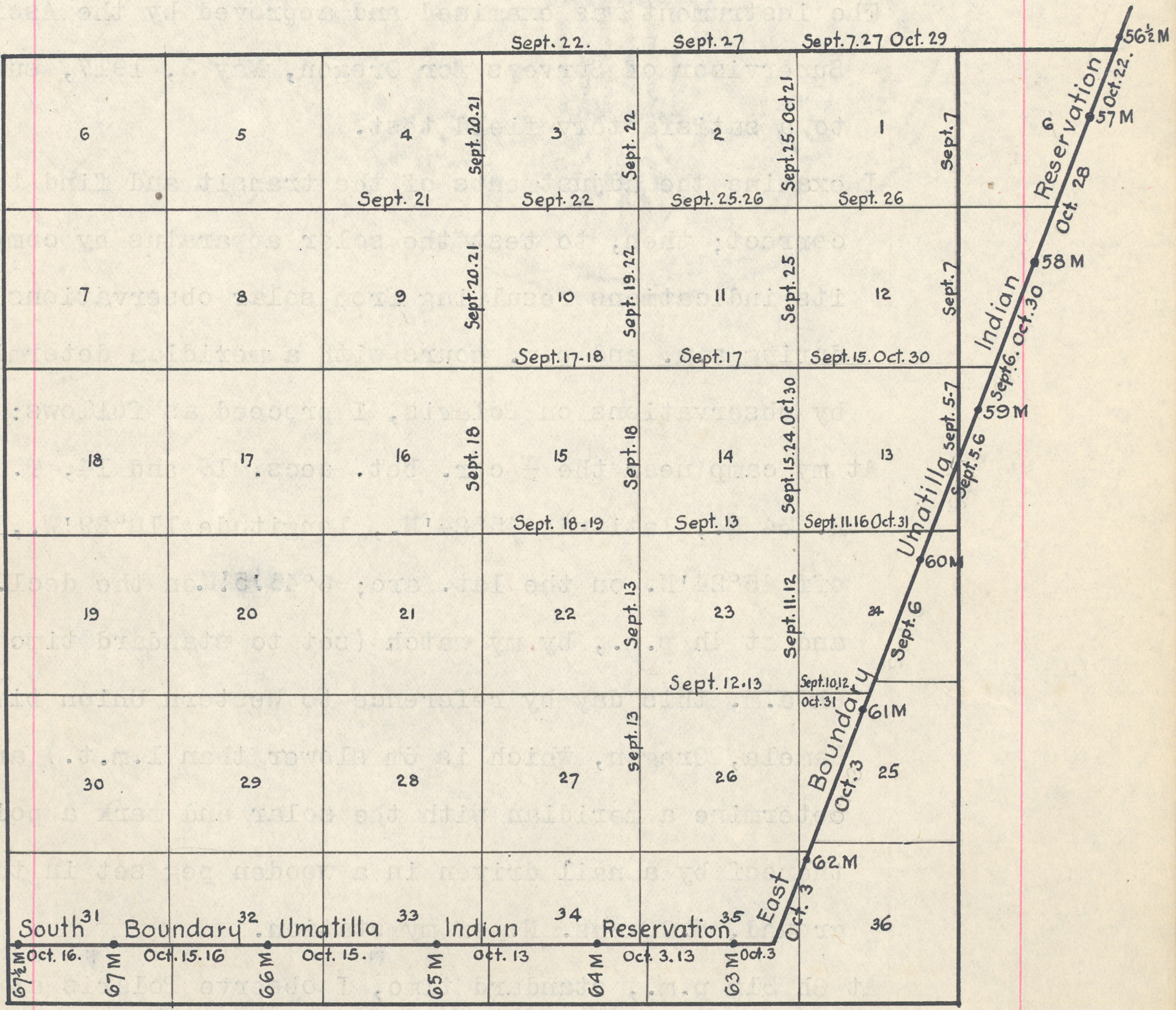
Blue indicates retracements

Green indicates resurveys

Township No. 2 South, Range No. 34 East

DATE DIAGRAM

Retracements, Resurveys and Surveys for Year 1917



764

Retracement-Resurvey of the East Boundary

Original Umatilla Indian Reservation

Chains

Survey commenced Sept. 5, 1917 and executed with a Young and Sons light mountain transit No. 8585, with Smith solar attachment. The horizontal limb is provided with two double verniers placed opposite to each other, reading to single minutes of arc, which is also the least count of the verniers of the latitude and declination arcs.

The instrument was examined and approved by the Assistant Supervisor of Surveys for Oregon, May 3, 1917, subject to a satisfactory field test.

I examine the adjustments of the transit and find them correct; then, to test the solar apparatus by comparing its indications resulting from solar observations made during a.m. and p.m. hours with a meridian determined by observations on Polaris, I proceed as follows:

At my camp near the $\frac{1}{4}$ cor. bet. secs. 13 and 14, T. 2 S., R. 34 E., latitude $45^{\circ}24'N.$, longitude $118^{\circ}29'W.$, I set off $45^{\circ}24'N.$ on the lat. arc; $6^{\circ}46:5'N.$ on the decl. arc; and at 4h p.m., by my watch (set to standard time at 8h a.m. this day by reference to Western Union time at Kamela, Oregon, which is 6m slower than l.m.t.) and determine a meridian with the solar and mark a point thereof by a nail driven in a wooden peg set in the ground, 5.00 chs. N. of my station.

At 8h 31m p.m., standard time, I observe Polaris at eastern elongation, in accordance with the Manual of Instructions, and mark a point in the line thus determined, by a nail driven in a wooden peg set in the ground, 5.00 chs. N. of my station.

September 5, 1917.

Sept. 6: At 7h a.m., l.m.t., I lay off the azimuth of Polaris $1^{\circ}37'$ to the west and mark the meridian thus determined by a nail driven in a wooden peg set in the

Retracement-Resurvey of the East Boundary

Original Umatilla Indian Reservation

Chains

ground, 5.00 chs. N. of my station.

At 7h a.m., l.m.t., I set off 45°24'N. on the lat. arc; 6°34'N. on the decl. arc; and mark a point in the meridian determined with the solar, which falls 0°01' to the west of the true meridian established by Polaris observation.

The solar apparatus, by p.m. and a.m. observations, defines positions for meridian, respectively about 0°00'20" east and 1' west of the meridian established by the Polaris observation; therefore, I conclude that the adjustments of the instrument are satisfactory.

From the 57 Mile Cor., a lodgepole pine tree, 10 ins. diam., fallen and decayed, the position of which is determined by the original bearing trees. At the exact cor. point

Set an iron post, 3 ft. long, 2 ins. diam., 24 ins. in the ground, for the 57 Mile Cor., with brass cap marked

T2S R35E

UIR/57M

1917

from which

A fir, 5 ins. diam., bears N.87°E., 13 lks. dist., marked U R 57 B T (now fallen)

A fir, 10 ins. diam., bears S.28°E., 23 lks. dist., blazes healed over and not opened.

A fir, 30 ins. diam., bears S.50°W., 30 lks. dist., marked in bark, U R 57 B T. I mark in wood, U I R 57 M B T.

A fir, 8 ins. diam., bears N.1°W., 10 lks. dist. (now fallen)

N.20°00'E., retracing the 57th Mile.

40.64 Fall 50 lks. S.70°E. of the 56½ Mile Cor., which is a fir tree, 5 ins. diam., marked ½ M on N. and U R on W. face; from which

766

Retracement-Resurvey of the East Boundary

Original Umatilla Indian Reservation

Chains

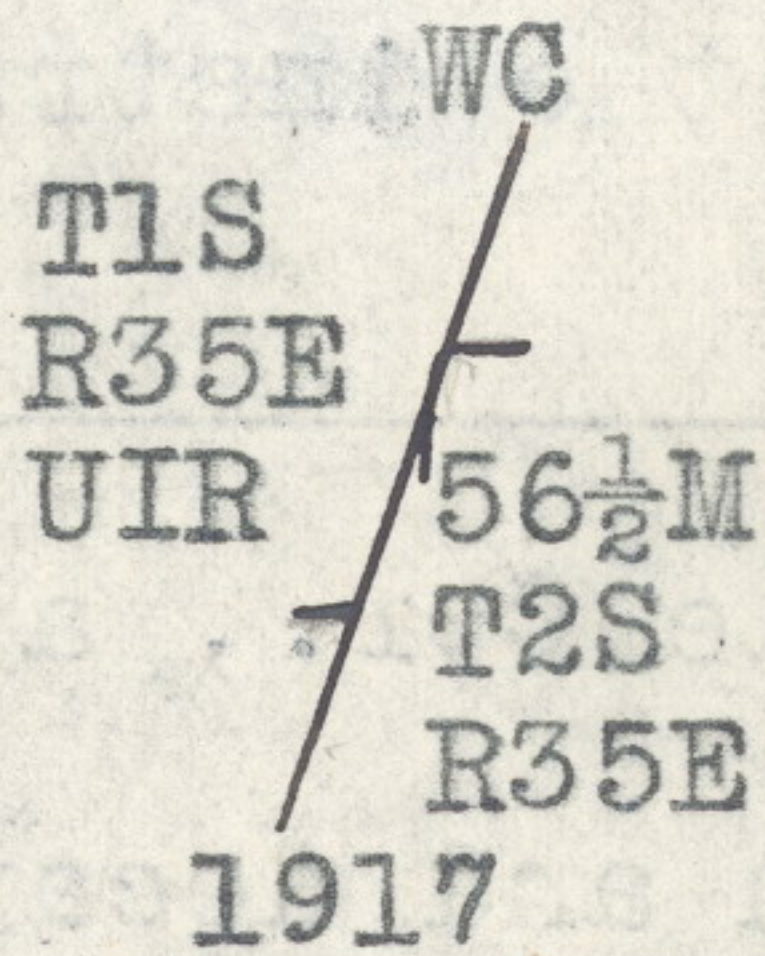
A lodgepole pine, 6 ins. diam., bears S.87°30'E., 13 lks. dist., marked U R 1/2 M.B.T.

The other bearing tree being dead and decayed, I mark

A balsam, 24 ins. diam., bears N.81°W., 35 lks. dist., marked U I R 56 1/2 M B T.

At a point 2 lks. S.20°W. from true cor.

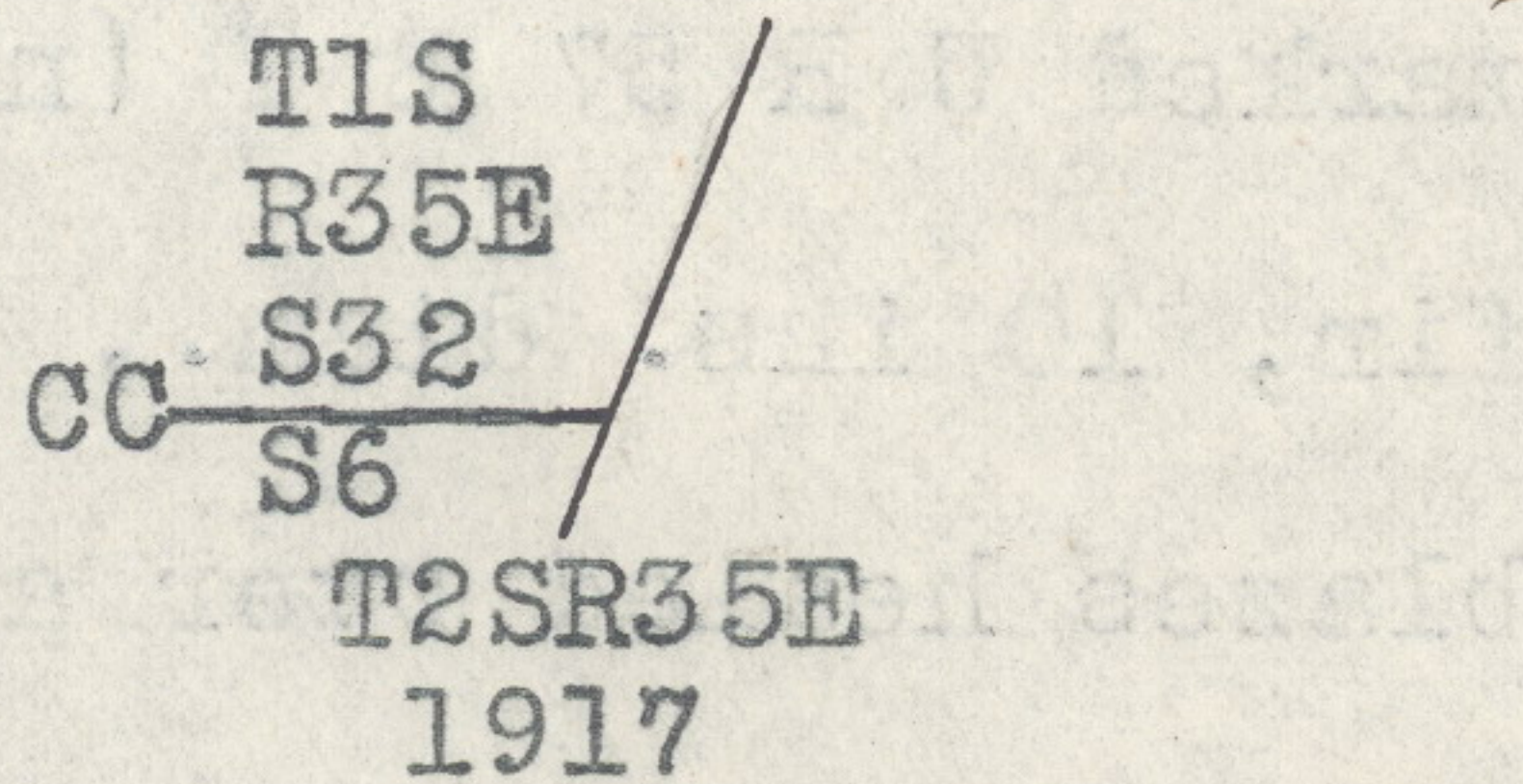
Set an iron post, 3 ft. long, 2 ins. diam., 24 ins. in the ground, for witness cor. to the 56 1/2 Mile Cor., with brass cap marked



Thence S.19°17'W., on a true line, resurveying the 57th Mile Over rolling land, through heavy timber and undergrowth.

5.92 Closing cor. of secs. 32 and 6, Tps. 1 and 2 S., R. 35 E., a decayed post with marks obliterated. At the exact cor. point

Set an iron post, 3 ft. long, 2 ins. diam., 24 ins. in the ground, for closing cor. of secs. 32 and 6, Tps. 1 and 2 S., R. 35 E., with brass cap marked



from which

A tamarack, 16 ins. diam., bears N.69°E., 27 lks. dist., blazes healed over.

A lodgepole pine, 10 ins. diam., bears S.20°W., 7 lks. dist., blazes healed over.

A tamarack, 15 ins. diam., bears N.34 1/2°W., 40 lks. dist., blazes healed over.

40.64 The 57 Mile Cor., heretofore described.

Land, high, rolling and mountainous.

Retracement-Resurvey of the East Boundary

Original Umatilla Indian Reservation

Chains

Soil, light loam and rocky, 2nd rate.

Timber, pine, balsam, fir and tamarack.

Undergrowth, balsam and willow.

S.20°00'W., retracing the 58th Mile

39.86 Fall 70 lks. N.70°W. of the 57½ Mile Cor., which is a lodgepole pine, 10 ins. diam., marked U R on W. and ½ M on N.; from which

A lodgepole pine, 8 ins. diam., bears N.60°E., 10 lks. dist., marked 57½ M B T.

A yellow pine, 10 ins. diam., bears S.50°W., 15 lks. dist., marked 57½ M B T.

At a point 3 lks. S.17°26'W. of the true cor.

Set an iron post, 3 ft. long, 2 ins. diam., 24 ins. in

the ground, for witness cor. to the 57½ Mile Cor., with brass cap marked

WC
T2S / R35E
57½M
1917

Thence

N.19°00'E., on a true line, resurveying the 58th Mile

Over heavily rolling, mountainous land, through heavy timber and medium undergrowth.

Descend 300 ft. to

36.00 Cabin, bears S.70°E., 250 lks.

38.50 Brook, 2 lks. wide, course NW. Cold spring bears SE., about 3.00 chs. dist.

39.86 The 57 Mile Cor.

From the 57½ Mile Cor.

S.17°30'W., retracing south half of 58th Mile.

40.40 Fall 4 lks. N.70°W. of the 58 Mile Cor., which is a pine tree, 36 ins. diam., marked U R on W. and 58 M on N. face; from which

A pine, 30 ins. diam., bears S.3°E., 23 lks. dist., marked U R 58 M B T.

768

Retracement-Resurvey of the East Boundary

Original Umatilla Indian Reservation

Chains

A pine, 36 ins. diam., bears S.60°W., 11 lks. dist.,
marked U R 58 M B T.

I remove the marks from these bearing trees, they being
marked in the bark, and remark them in the wood.

At a point 15 lks. S.18°09'W. of the true cor.

Set an iron post, 3 ft. long, 2 ins. diam., 24 ins. in the
ground, for witness cor. to the 58 Mile Cor., with brass
cap marked

WC
T2S R35E
UIR / 58M
1917

Thence

N.17°26'E., on a true line, resurveying south half of the
58th Mile.

Over heavily rolling land, through heavy timber and medium
undergrowth.

40.40 The 57½ Mile Cor., heretofore described.

Land, heavily rolling.

Soil, shallow, over basalt rock; 2nd rate.

Timber, yellow pine and fir.

Undergrowth, pine, fir and balsam.

*

From the 58 Mile Cor.

S.20°00'W., retracing the 59th Mile

40.00 Find no trace of the 58½ Mile Cor. Set temp. cor.

79.76 Fall 257 lks. N.70°00'W. of the 59 Mile Cor., which is a
boulder, 4x3x3 ft. above ground, marked U R on W. face
(very dim) and other marks illegible; from which

A pine, 24 ins. diam., bears S.20°E., 70 lks. dist.,
marked 59 M U R, lower blaze healed over and not
opened.

I mark a new bearing tree:

A pine, 4 ins. diam., bears S.42°E., 18 lks. dist.,
marked U R 59 M B T.

Cut a cross on top of boulder and U R 59 M on W. face.

Retracement-Resurvey of the East Boundary

Original Umatilla Indian Reservation

Chains

Thence
 N.18°09'E., on a true line, resurveying the 59th Mile.
 Over mountainous land, through medium heavy timber and
 undergrowth.
 Descend 200 ft. to
 13.62 Dry gulch, course NW.
 18.12 Dry gulch, course W.
 Leave timber and brush; enter glade, bears E. and W.
 Ascend 270 ft. to
 27.00 Top of ascent; enter timber and brush, bears E. and W.
 39.90 Set an iron post, 3 ft. long, 2 ins. diam., 24 ins. in the
 ground, for 58½ Mile Cor., with brass cap marked
 58½M
 UIR/
 1917
 from which.
 A fir, 30 ins. diam., bears S.74°15'E., 69 lks. dist.,
 marked U I R 58½ M B T.
 A fir, 18 ins. diam., bears S.74°15'W., 40 lks. dist.,
 marked U I R 58½ M B T.
 Descend 150 ft. to ravine.
 57.22 Fence, bears E. and W.
 70.27 Ravine, course N.75°W.; ascend 110 ft. to 58 Mile Cor.
 71.50 Leave timber and brush; enter glade, bears E. and W.
 79.00 Enter timber, bears NE. and W.
 79.80 The 58 Mile Cor., heretofore described.
 Land, broken.
 Soil, volcanic ash, over bedrock of basalt, washed off at
 glades; 2nd rate.
 Timber, fir, lodgepole pine and yellow pine.
 Undergrowth, fir, lodgepole pine, yellow pine and willow.

From the 59 Mile Cor.
 S.20°00'W., retracing 60th Mile
 40.36 Fall 72 lks. S.70°E. of the 59½ Mile Cor.; original tree

770

Retracement-Resurvey of the East Boundary

Original Umatilla Indian Reservation

Chains

now fallen and rotten, marked U R on W. face. At exact cor. point

Set an iron post, 3 ft. long, 2 ins. diam., 24 ins. in the ground, for 59 1/2 Mile Cor., with brass cap marked

UIR / 59 1/2 M.

1917

from which

A fir, 24 ins. diam., bears N.69°30'E., 53 lks. dist., marked 1/2 M U R, lower blaze healed over and unopened.

A fir, 20 ins. diam., bears N.63°W., 50 lks. dist., marked U R 1/2, lower blaze healed over and unopened.

Thence

N.21°02'E., on a true line, resurveying north half of 60th Mile.

Over rolling land, heavily timbered, medium undergrowth.

20.00 Road, Kamela to settlements, bears E. and W.

40.37 The 59 Mile Cor., heretofore described.

Land, rolling.

Soil, volcanic ash, over bedrock of basalt; 2nd rate.

Timber, pine and fir.

Undergrowth, pine and fir.

From the 59 1/2 Mile Cor.

S.20°00'W., retracing the south half of 60th Mile

40.23 Fall 34 lks. N.70°W. of the 60 Mile Cor., which is a basalt

stone, 12x10x9 ins., dimly marked 60 M and set in a small mound of stone. I remark the stone 60 M on E. and

U R on S.; from which

A pine, 24 ins. diam., bears S.21°E., 107 lks. dist., marked 60 M U R B T.

A fir, 15 ins. diam., bears S.44°W., 171 lks. dist., marked 60 M U R B T.

Raise a mound of stone, 4 ft. base, 2 ft. high, N.70°W. of cor.

This cor. is on secure ground and it is impracticable to

Retracement-Resurvey of the East Boundary

15771

Original Umatilla Indian Reservation

Chains

set an iron post at this point.

Thence

N.19°31'E., on a true line, resurveying the south half of 60th Mile.

Over mountainous land, through heavy timber.

3.00 Dry gulch, course NW., 60 ft. below cor.

18.00 Brink of canyon, bears N.60°E. and S.60°W.; descend 220 ft. to

27.00 Bottom of canyon, course S.80°W.; ascend 210 ft. to

33.60 Leave canyon, bears N.60°E. and S.60°W.

37.11 Intersect range line, 23.15 chs. S.0°11'W. of the 1/4 cor.

bet. secs. 13 and 18, T. 2 S., Rs. 34 and 35 E. and set closing cor. for secs. 13 and 18, hereinafter described.

40.23 The 59 1/2 Mile Cor., heretofore described.

Land, rolling and mountainous.

Soil, light volcanic ash, rocky; 1st and 3rd rate.

Timber, yellow pine, fir and tamarack.

Undergrowth, yellow pine, fir and tamarack.

From the 60 Mile Cor. S.20°00'W., retracing the north half of 61st Mile.

39.74 Fall 52 lks. S.70°E. of the 60 1/2 Mile Cor., hereinafter described.

From the 60 1/2 Mile Cor.

S.20°00'W., retracing south half of 61st Mile, continuing my measurements.

79.12 Fall 53 lks. N.70°W. of the 61 Mile Cor., which is a fir tree, 6 ins. diam., marked U R on W. and 61 M on N. side; from which

A fir, 7 ins. diam., bears N.62°E., 10 lks. dist.,

blazes healed over.

A tamarack, 8 ins. diam., bears S.17°E., 19 lks. dist.,

blazes healed over.

A pine, 30 ins. diam., bears N.62°W., 20 lks. dist.,

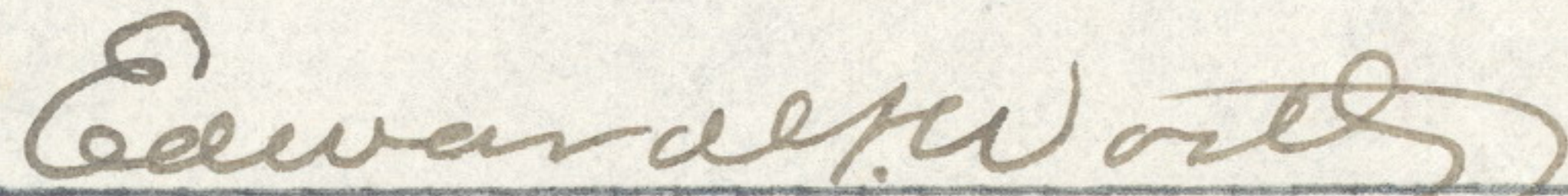
marked in bark U R 61 M B T. I remark in the wood,

For Final Certificate of U. S. Surveyor, see Book "E"

Approval

Office of U. S. Surveyor General,
Portland, Oregon, August 26, 1918

The foregoing field notes of the Resurvey of the Original Umatilla Indian Reservation Boundary from the 56½ Mile Cor. to the SW. Cor. thereof; Resurvey Portion of N. and E. Bdrs. and Retracement, Resurvey and Survey of Subdivisional Lines in Township No. 2 South, Range No. 34 East of the Willamette Meridian, Oregon, executed by L. E. Wilkes, U. S. Surveyor, under his special instructions dated February 20, 1917, having been critically examined, and the necessary corrections and explanations made, the said field notes, and the surveys they describe, are hereby approved.


U. S. Surveyor General

