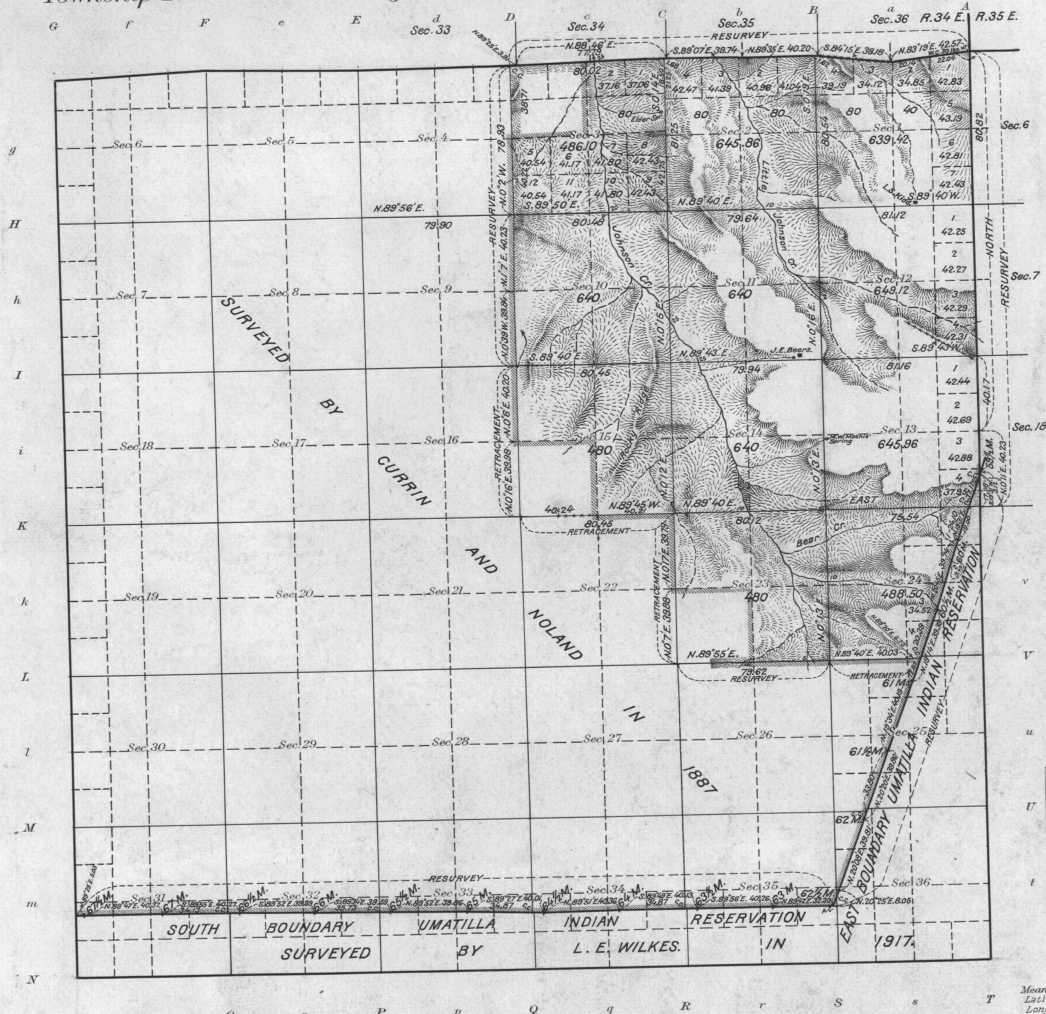


Township N<sup>o</sup> 2 South Range N<sup>o</sup> 34 East of the Willamette Meridian, Oregon.



Areas in Acres	
Public Land	6434.96
Indian Reservation	
Indian Allotments	
Mineral Claims	
Water Surface	
<b>Total Area</b>	<b>6434.96</b>

Scale 40 Chains to an inch  
 Mean Magnetic Declination 19° 30' E.  
 Latitude 45° 21' N. At Cor. of Secs. 23, 24, 25 and 26.  
 Longitude 118° 29' W.

Surveys Designated	By Whom Surveyed	Group		Amount of Surveys		When Surveyed	
		No.	Date of Instructions	Mts.	chs.	begun	Completed
Resurvey Portion N. & E. Bdrs.	L. E. Wilkes.	29	February 20, 1917	6	3	67	Sept. 5, 1917. Oct. 29, 1917.
Retreat, Bound. & Star-Portion Subds.	"	"	"	22	45	82	" 10 " " 21 "
Connections	"	"	"	35	02	"	" 5 " " "
Resurvey U. I. Bdrs.	"	"	"	8	02	31	" " " " 16 "
N. E. & W. Bdrs.	Currin & Noland.						in 1887
S. Bdy.	Rufus S. Moore.	under	Contract	No.	451	in	1882
E. Bdy.	J. O. Cooper.	"	"	"	359	"	1851
Reservation Bdy.	Reestablished by Currin & Noland	under	Special	Contract	"	"	1887

The above map of Township No. 2 South, Range No. 34 East of the Willamette Meridian, Oregon, is strictly conformable to the field notes of the survey thereof on file in this office, which have been examined and approved  
 U. S. Surveyor General's Office.  
 Portland, Oregon, August 26, 1918.

*Edward Worth*  
 Surveyor General of Oregon.