

FIELD NOTES

Of the survey of the Reservation Boundary

Lines of

Willamette Meridian, Oregon,

as surveyed by James P. Carrin and James Edoland

their special

U. S. Deputy Surveyor, under his Contract No. _____

dated May 4th, 1887

Survey commenced, June 15th, 1887

Survey completed, November 5th, 1887

NAMES AND DUTIES OF ASSISTANTS.

_____, Compassman.
J. M. Henry, Chainman.
J. S. Medley, Chainman.
W. H. Medley, Chainman.
Frank Belshaw, Chainman.
R. Rush, Axman.
A. Keatch, Axman.
_____, Flagman.

PRELIMINARY OATHS OF ASSISTANTS.

We, *W. Henry, J. S. Medley, W. H. Medley and Frank Belshaw*

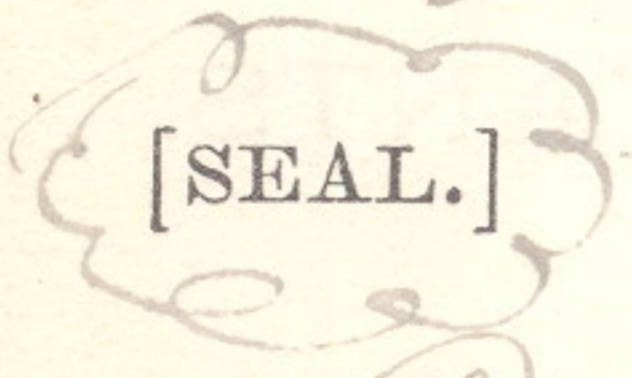
do solemnly swear that we will faithfully execute the duties of Chain Carriers; that we will level the chain over even and uneven ground, and plumb the tally pins, either by sticking or dropping the same; that we will report the true distance to all notable objects, and the true length of all lines that we will assist in measuring, to the best of our skill and ability, and in accordance with the instructions given us in the survey

of the *Reservation Boundary* lines of

Willamette Meridian, Oregon.

J. W. Henry, Chainman.
J. S. Medley, Chainman.
W. H. Medley, Chainman.
Frank Belshaw, Chainman.

Subscribed and sworn to before me this *15th* day of *June*, 188*7*



James E. Noland
U. S. Dept. Surveyor

We, *R. Rush* and *H. Neatch*, do solemnly

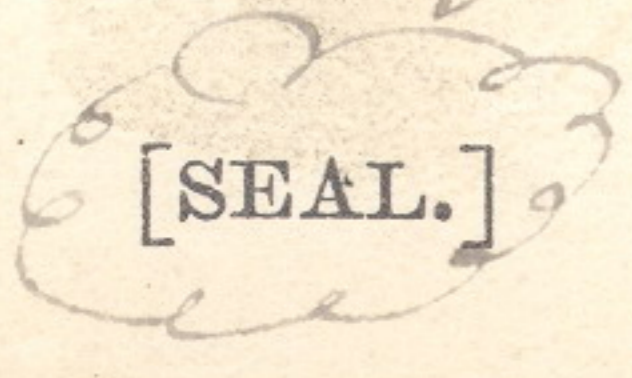
swear that we will well and truly perform the duties of Axmen in the establishment of corners and other duties, according to instructions given us, and to the best of our skill and ability, in the survey of the

Reservation Boundary

Willamette Meridian, Oregon.

R. Rush, Axman.
H. Neatch, Axman.

Subscribed and sworn to before me this *Fifteenth* day of *June*, 188*7*



James E. Noland
U. S. Dept. Surveyor

R 32 E

R 33 E

T 4 N. R 34 E

R 35 E

R 36 E

63

T 3 N.

T 2 N.

T 1 N.

BASE LINE

T 1 S

T 2 S

62

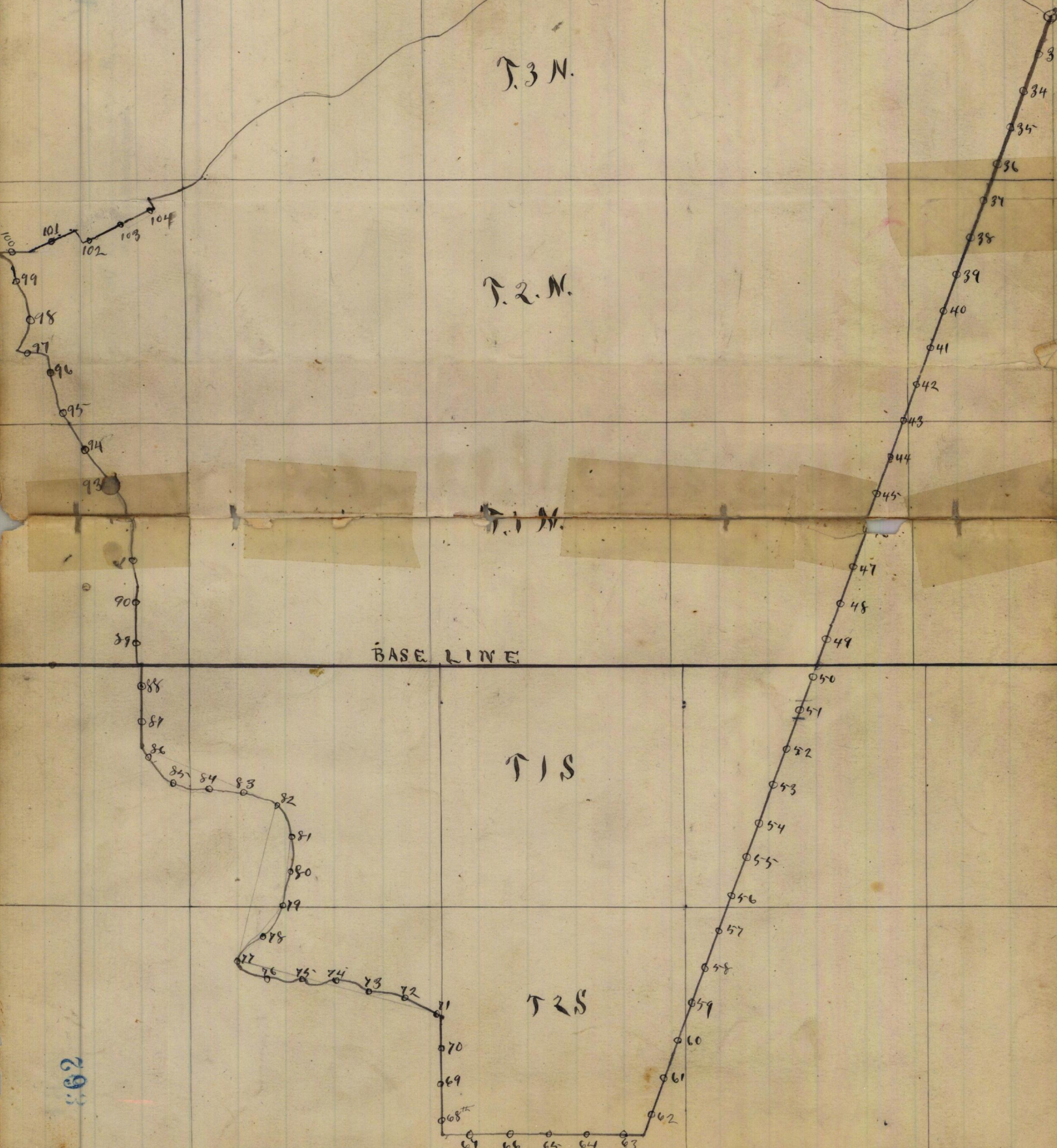
R 32 E

R 33 E

R 34 E

R 35 E

R 36 E



Reservation Boundary

112

of T.

R.

Willamette Meridian, Oregon.

(8093-10 M.)

West on 6th Mile

Var 17° E

- 4.00 Enter prairie course N.E. & S.W.
- 26.50 Wagon road " " "
- 40.00 Set a basal-stone 14 x 10 x 8 ins
9 ins in the ground for 1/2 mile
stone marked 1/2 man E & W.R. on
N faces from which a pine 16 ins
in diam to S 52° E dist-170 lks
W to 1/2 M. N. R. B. D. to other tree
in limits raised stone mound ^{around it}
- 44.94 Intersect-line bet Tps 2 & S. Rs. 33
& 34 E. at 22.80 lks. N of cor. To
Tps 2 & 3 S. Rs 33 & 34 E. Set a post
14 x 4 x 4 ins 2 ft in the ground for
S. W. cor. to Reservation & Closing
Cor on Tp. line marked C. E. W. R.
on N. E. corner mound of stone around it
From this point we run N. on the
Tp. line, as we were getting over
the divide on the Birch creek side

Reservation Boundary

40

113

of T.

R.

Willamette Meridian, Oregon.

20 Enter dense underbrush
 720 1/4 Sec. cor. an E. by Sec. 36 marked it - U. R. an E face
 3506 Set a post - 48 x 4 x 4 ins for 68 miles
 post - marked 68 M. an S + U. R. an E faces
 found a mound of stone around it
 found rolling soil 3rd grade
Pine + Tamarack timber + ^{dense} brush 5000 chs

North on 69th Mile
 Var. 20° 15' E

1214 Cor. To sec. 25 + 36. marked it - U. R. an E face
 1620 Wagner Road Course S. W
 4000 Set a post - 48 x 4 x 4 ins 24 ins in the
 ground for 1/2 mile post - marked
 1/2 M. an S + U. R. an E. faces. From
 which a pine 8 ins in diam. to S 50 W
 dist 4 1/2 lks. marked 1/2 M. U. R. B.T., a Tam-
 arack 8 ins in diam. to S 85° E dist 3 1/2
 lks marked 1/2 M. U. R. B.T.
 5214 1/4 Sec. cor. an E. by Sec. 25 marked it - U. R. an E face
 8000 Set a post - 48 x 4 x 4 ins 24 ins in

Reservation Boundary

114

of T.

R.

Willamette Meridian, Oregon.

(8093-10 M.)

The ground for 69th Mile
 Post-Mkd 69 M. and S. U. R. and E face
 From which a fir 40 ins in diam.
 Is S 45° E dist 10 kps. a fir 16 ins in
 diam Is. N 40° W dist 140 kps. Each
 mkd 69 M. U. R. B. T. - 600

Land Maintenance 80 ch
 Soil 2nd rate
 Good Pine fir & Fir spruce
 timber with dense underbrush
 in places, & frequent small prairies

North on 70th Mile
 Var. 19° 30' E

- .64 Corner with wagon road - W
- 12.14 cor. To Secs. 24 & 25 mkd. it U. R. and E face
- 20.00 Top of ridge S.W. + 500
- 30.00 Corner " " - 30
- 40.00 Set a basal-stone 18x14x6 ins
 12 ins in the ground for 1/2
 Mile stone marked 1/2 M. and

Reservation Pandora 42

of T.

R.

115

Willamette Meridian, Oregon.

	S + N. R. on E faces, raised a mound of stone around it - + 100
52.14	24 sec cor on E by sec 24. which I marked N. R. on E faces + 500
64.40	Common Course S.W. - 600
70.00	Set a basal stone 18 x 10 x 12 ins 12 ins in the ground for 70 th mile stone Marked 70 M on S + N. R. on E faces
	Raised a stone mound around it -
	Loam Mountainous 80. ch
	Soil Rocky 4 th rate
	No timber
	Good bunch grass

Reservation Boundary

of T. _____ R. _____

Willamette Meridian, Oregon.

(8093-10 M.)

North on 77th Mile

Var 22° E

12.14 cor. To secs 13 + 24 which I marked
U.R. on E. face

34.10 Daly wagon road course N.W. + S.E.

Set a post - 36 x 3 x 3 ins 12 ins in

The ground for 7th angle cor.

Marked U.R. on E face + raised a

stone mound around it pits Imprac

Thence I run S 50° W down divide

between McWay (Howlome)

+ Birch creeks

5.90 set 1/2 mile stone 10 x 10 x 10 ins 6

ins in the ground marked 1/2 M.

on S + W.R. on N faces. raised a

stone mound around it

45.90 set a Basalt stone 10 x 10 x 10 ins

6 ins in the ground for 77th Mile

and 2nd angle cor. stones, mtd. 71 M on S + W.R. on N

faces. raised a stone mound around

it pits Impracticable

Land } mountainous 34.10 chs.
balance level, soil rocky 4th rate
no grass or timber June 24th 1887

FINAL OATHS FOR SURVEYS.

162 A list of the names of the individuals employed by James P. Currier and James E. Roland, U. S. Deputy Surveyor, to assist in running, measuring, and marking the lines and corners described in the foregoing field notes of the survey of the Reservation Boundary lines of

Willamette Meridian, Oregon, showing the respective capacities in which they acted:

- J. W. Henry, Compassman.
J. S. Medley, Chainman.
W. H. Medley, Chainman.
Frank Belshaw, Chainman.
B. Rush, Axman.
H. Veitch, Axman.
Flagman.

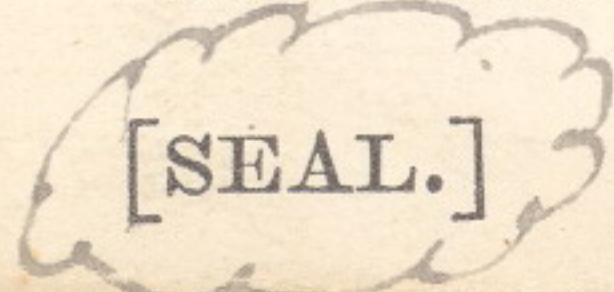
FINAL OATHS OF ASSISTANTS.

We hereby certify that we assisted James P. Currier and James E. Roland, U. S. Deputy Surveyor, in surveying all those parts or portions of the Reservation Boundary of

Willamette Meridian, Oregon, as represented in the foregoing field notes as having been surveyed by him and under his direction; and that said survey has been in all respects, to the best of our knowledge and belief, well and faithfully surveyed, and the corner monuments established, according to the instructions furnished by the U. S. Surveyor General of Oregon.

- J. W. Henry, Compassman.
J. S. Medley, Chainman.
W. H. Medley, Chainman.
Frank Belshaw, Chainman.
B. Rush, Axman.
H. Veitch, Axman.
Flagman.

Subscribed and sworn to before me this Fifth day of November, 1887.



James E. Roland U. S. Deputy Surveyor

FINAL OATH OF DEPUTY SURVEYOR.

We James P. Curran and James E. Poland, United States
 Deputy Surveyor, do solemnly swear that in pursuance of instructions
 received from Douglas H. Taylor, U. S.
 Surveyor General for Oregon, bearing date of the 13th
 day of May, 1887, I have well, faithfully,
 and truly, in ~~my~~ ^{our} own proper person, and in strict conformity with the
 instructions furnished by the U. S. Surveyor General for Oregon, the
 Surveying Manual, and the laws of the United States, surveying all
 those parts or portions of Reservation Boundary

Willamette Meridian, in the State of Oregon, as are represented in the
 foregoing field notes as having been surveyed by me and under my
 directions; and I do further solemnly swear that all the corners of said
 survey have been established and perpetuated in strict accordance with
 the Surveying Manual, printed instructions, the special written instruc-
 tions of the U. S. Surveyor General for Oregon, and in the specific man-
 ner described in the field notes, and that the foregoing are the *true* field
 notes of such survey, and should any fraud be detected I will suffer the
 penalty of perjury under the provisions of an act of Congress approved
 August 8, 1846.

James P. Curran, & James E. Poland
 U. S. Deputy Surveyor.

Subscribed and sworn to before me this Fifteenth
 day of February, 1888

Alex Woodcock
 Notary Public
 for Oregon

Office of U. S. Surveyor General,

Portland, Oregon, Sept 20th, 1888

The ~~following~~ ^{foregoing} Field Notes of the Survey of ~~the~~
 a portion of Boundary line
 of the Umatilla Indian
 Reservation in Oregon
 executed by James P. Currier and James E. Nola
 Special Joint U. S. Dept Surveyors.
 under ~~his~~ Contract No., dated May
 4th, 1887, having been critically examined,
 the necessary corrections and explanations made, the
 said Field Notes and the survey they describe, are
 hereby approved.

Douglas W. Taylor -

Surveyor General.