

FIELD NOTES

Of the survey of the Reservation Boundary

Lines of

Willamette Meridian, Oregon,

as surveyed by James P. Carrin and James Edoland

their special

U. S. Deputy Surveyor, under his Contract No. _____

dated May 4th, 1887

Survey commenced, June 15th, 1887

Survey completed, November 5th, 1887

NAMES AND DUTIES OF ASSISTANTS.

_____, Compassman.
J. M. Henry, Chainman.
J. S. Medley, Chainman.
W. H. Medley, Chainman.
Frank Belshaw, Chainman.
R. Rush, Axman.
A. Keatch, Axman.
 _____, Flagman.

PRELIMINARY OATHS OF ASSISTANTS.

We, *W. Henry, J. S. Medley, W. H. Medley and Frank Belshaw*

do solemnly swear that we will faithfully execute the duties of Chain Carriers; that we will level the chain over even and uneven ground, and plumb the tally pins, either by sticking or dropping the same; that we will report the true distance to all notable objects, and the true length of all lines that we will assist in measuring, to the best of our skill and ability, and in accordance with the instructions given us in the survey

of the *Reservation Boundary*

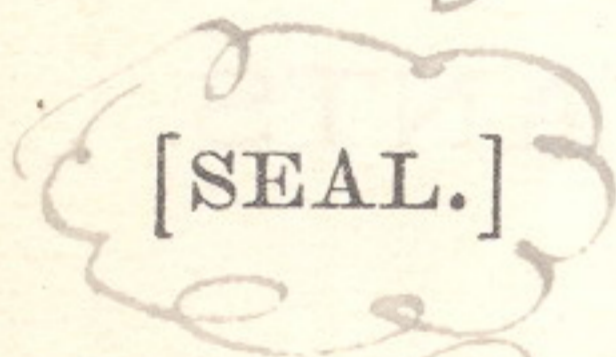
lines of

Willamette Meridian, Oregon.

J. W. Henry, Chainman.
J. S. Medley, Chainman.
W. H. Medley, Chainman.
Frank Belshaw, Chainman.

Subscribed and sworn to before me this *15th*

day of *June*, 188*7*



James E. Noland
U. S. Dept. Surveyor

We, *R. Rush* and *H. Neatch*

do solemnly swear that we will well and truly perform the duties of Axmen in the establishment of corners and other duties, according to instructions given us, and to the best of our skill and ability, in the survey of the

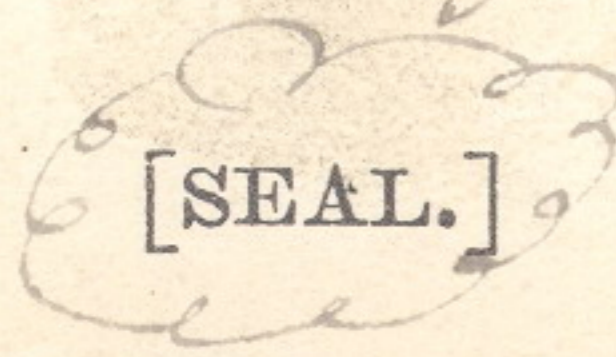
Reservation Boundary

Willamette Meridian, Oregon.

R. Rush, Axman.
H. Neatch, Axman.

Subscribed and sworn to before me this *Fifteenth*

day of *June*, 188*7*



James E. Noland
U. S. Dept. Surveyor

R 32 E

R 33 E

T 4 N. R 34 E

R 35 E

R 36 E

63

T. 3 N.

T. 2 N.

T. 1 N.

BASE LINE

T 1 S

T 2 S

62

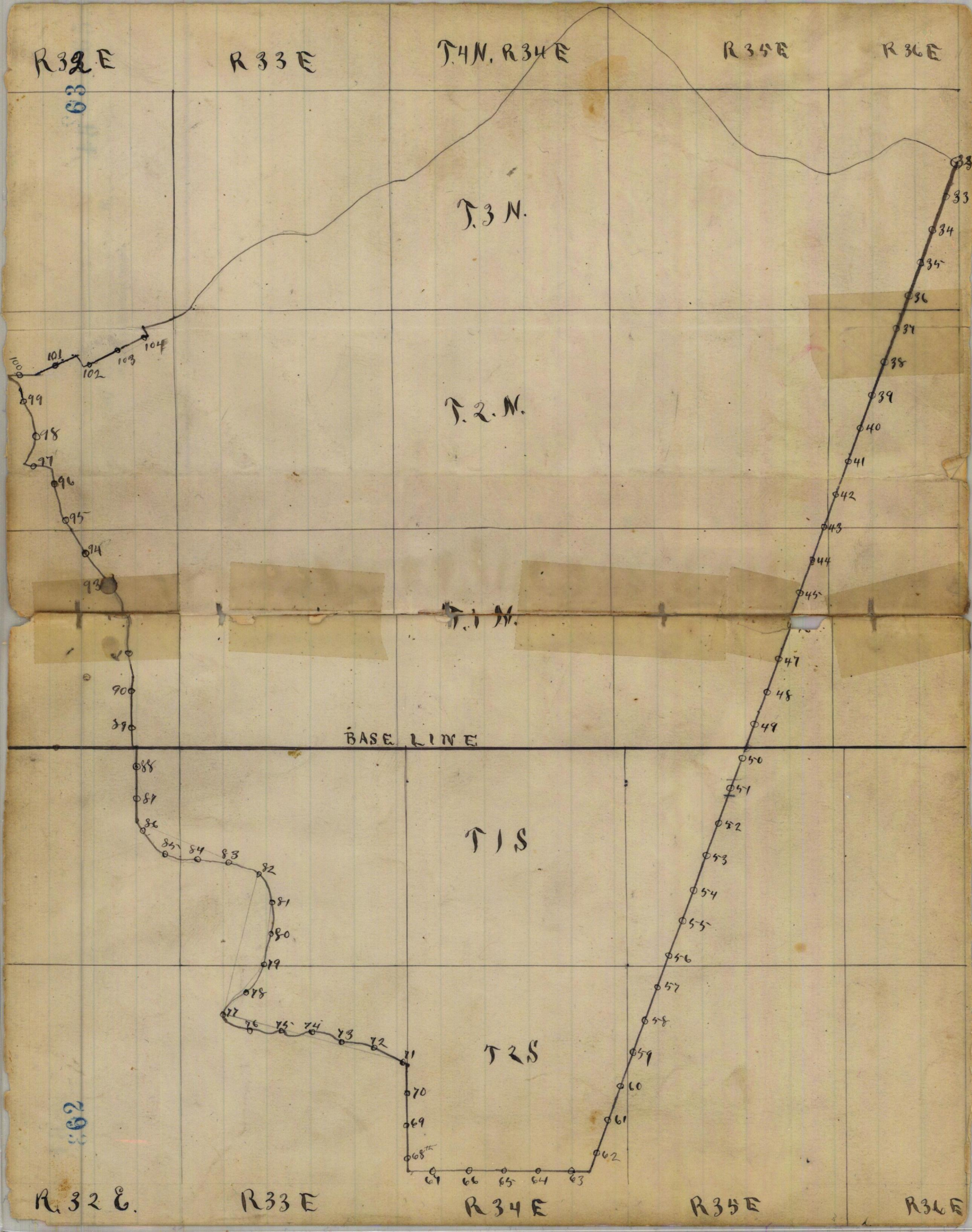
R 32 E.

R 33 E

R 34 E

R 35 E

R 36 E



Reservation Boundary ²⁸

of T.

R.

101

Willamette Meridian, Oregon.

South 20° W on 59th Mile
Var 19° 15' E

940 Ravine - 400

4000 Set a post 48 x 4 x 4 ins 24 ins in
The ground for 1/2 mile post-
marked 1/2 M on N & U. R. on
W. faces. From which a pine
4 ins in diam to S 80° W dist 7
links a pine 16 ins in diam
to N 75° E dist 13 lks marked 1/2
M. U. R. B. T. on each tree

6300 Canoe Course N. W. - 500

8000 To a ^{in place} basal stone 5 x 5 x 3 ft above
ground - which I marked
59 M on N & U. R. on W & a + on
^{at exact corner point.}
Top, from which a pine 16 ins in
diam to S 25° E dist 69 lks ^{marked 59 M U. R. B. T.} no
other tree in limits

Land maintained ⁸⁰⁰⁰ Soil 3rd
rate, pine & fir timber with
dense underbrush of same

29 Reservation Boundary

1.02

of T. _____ R. _____

Willamette Meridian, Oregon.

(8093-10 M.)

South 20° W on 60th Mile
Var 17° E

- | | | | |
|-------|---|------|------|
| 40.00 | A Red fir 12 ins in diam which I marked for 1/2 mile cor 1/2 m on N + N. R. on W from which a fir 14 ins in diam bears N. 65° W dist - 47 lks a fir 14 ins in diam br N 65° E dist - 53 lks each m- | | |
| 46.50 | at the 1/2 m. N. R. B.P. | | |
| 47.00 | 9 m top line bet S. 2 S R 34 + 35 E | +200 | |
| | Bluff of rock | | +200 |
| 53.50 | gulch course W | -300 | -300 |
| 62.00 | Intersect N. day. of sec. 24 T. 2. S. R. 34 E. 6.00 chs W of cor on Tp. line | | |
| 63.00 | Top of ridge | +300 | +300 |
| 77.00 | Canal course W | -100 | -100 |
| 80.00 | Set a basalt stone 16 x 12 x 8 ins 10 ins in the ground for 60 th mile cor. mtd 60 m. N. R. gabled Stone mound over it. Land Mauritanians ^{80 chs} scattering pines. | | |

Reservation Boundary

103³⁰

of T. _____ R. _____

Willamette Meridian, Oregon.

South 20° on 61st Mile

Var 27° 50' E

450	Ravine Course N. W.	- 100
650	Summit of Hill ... "	+ 100
1950	bluff descend	
3980	Creek. Canyon. water in holes. Course N. W. - 1500	
4000	A fir tree 12 ins in diam which I marked for 12 mile cor. 12 man N + E. R. and W. faces from which a fir 10 ins in diam to S 86° E dist. 30 lks. Marked 12 mile W. R. B. I. crossed a mound of stone along side	
6150	Top of bluff.	+ 1500
6300	enter prairie	
8000	A fir tree in diam. which I marked for 67 th mile cor. 61 man N + W. R. and E faces. from which a fir 6 ins in diam to N. 20° E. dist. 19 lks. A fir 4 ins in diam to S. 80° E dist 10 lks. A pine 20 ins in diam to S. 60° W dist. 20 lks Each marked 67 M. U. R. B. I.	
	Lowland Mountains ⁸⁰⁰⁰ Soil 4 th rate Pine & fir timber much of it fallen	

37

104

Reservation Boundary

of T. _____ R. _____

Willamette Meridian, Oregon.

(8093-10 M.)

South 20° N on 62nd Mile

Var 2130'E

- 3625 Gulch Course W -100
- 2800 Summit of ridge W +100
- 3330 Along branch Course W -300
- 4000 Set a box all stone 10x10x10 ins 6 ins
in the ground for 1/2 mile stone marked 1/2
mi on N & U. R on W faces. raised a stone
marked around it. As usual
- 5000 Summit of ridge +500
- 7750 Course & Brook 10 lbs wide Course N.W -600
- 8000 Set a post #8x4x4 ins 2 ft in the ground
for 62nd Mile post marked 62 mi on N &
U. R on W faces. from which a fir 5
ins in diam to N 23° W dist 18 lbs.
marked 62nd mi U. R. B. T.
- A fir 6 ins in diam to S 60° W dist 25 lbs
marked 62nd mi U. R. B. T.
- Land range to mountains 80. ch
- Soil rocky & the gate
- Pine fir & Pomeroy timber.
- Good Grass June 22 - 1887

Reservation Boundary

32

105

of T.

R.

Willamette Meridian, Oregon.

South 20° W on 63rd Mile

Var 19° 30' E

Ascend ridge

800 A rock 15 ft high

3200 Along wagon road course N.W.

4000 Set a post - 48 x 4 x 4 ins 2 ft in

The ground for 1/2rd Mile post -
Marked 1/2rd M on N + N.R. on W face
From which a fir 16 ins in diam

to N 30° W dist - 33 lks. a pine

14 ins in diam to S. 30° E dist - 25

lks. each Mkd. 1/2rd M. N. R. B. T.

4800 Summit of divide bet. McKay
+ Waters of Grande. Ronde river, at

a point dist - N 29.30 chs + W 2.56

chs from the cor to secs 12.35 + 36

on T. P. line bet 1 + 2 S. R. 34 E. set

a post - 48 x 4 x 4 ins for S. E. Cor to

Reservation Mkd. \angle on N + N.R.

on N. W. faces. From which a pine

16 ins in diam to N 10° W dist - 6 lks

106 Reservation Boundary

of T. R.

Willamette Meridian, Oregon.

(8093-10 M.)

A fir 8 ins in diam to S 25° W dist-
13 lks. each marked C.M.R.
B.T.

Thence W on S bdy of Reserve
Var 18° 30' E

3200 Set a post 48 x 4 x 4 ins 12
ins in the ground for 63rd
Mile Cor. Marked 63 M. ^{on the E} N. R.
an N. face

From which a pine 24 ins in d
diam. to S 80° W dist- 53 lks. A
pine 32 ins in diam. to S 72° E
dist- 28 lks. each marked 63
M. N. R. B.T. No other trees

in tracts raised a mound of stone
around it.
Land Main land and 80 ch
Soil 3rd rate
Pine & Fir timber
Grass. poor

Reservation Boundary

34

107

of T.

R.

Willamette Meridian, Oregon.

West-all 64th Mile

Var. $19^{\circ}45'E$

- | | | | |
|------|---|-------------|------|
| 1450 | dry gulch | Course S.W. | -100 |
| 2500 | Top of ridge | " " | +100 |
| 3800 | dry gulch | S.E. | -80 |
| 4000 | Set a post- $48 \times 4 \times 4$ ins 2 ft in the ground
for $\frac{1}{2}$ mile post marked $\frac{1}{2}$ M. U. B. on N. face
From which a Tamarack 20 ins in
diam. to $S 45^{\circ} E$ dist- 62 lks. Marked $\frac{1}{2}$ M.
U. B. A pine 6 ins in diam to $N 80^{\circ} W$
dist- 36 lks marked $\frac{1}{2}$ M. U. B. B. P. | | |
| 5200 | Summit of ridge | | +250 |
| 6300 | Wagon road in gulch | Course S | -250 |
| 7800 | Enter prairie. | | |
| 8000 | Top of hill set a barrell-stone $20 \times$
20×5 ins 15 ins in the ground for
64 th Mile stone mtd. 64 M. U. B. E.
& U. B. on N. face. raised stone named
Arann dit - Land rolling
Soil rocky 4 th rate,
Scattering Pine & Fir timber grass poor | | |

35 Reservation Boundary

108

of T. R.

Willamette Meridian, Oregon.

(8093-10 M.)

West on 65th Mile

Var 1.8 E

37.50 Leave prairie enter Ravine

40.00 Set a basalt stone 16 x 12 x 8 ins

11 ins. in the ground for 1/2 mile

stone from which a pine 14 ins.

in diam. to N 55° W dist 102 lks.

A pine 24 ins in diam. to S 48° W

dist 47 lks. each marked 1/2 M.

N. R. B. T.

64.00 Creek bottom

-400

70.00 Jennings Creek to course S. E. 15 lks.

80.00 Set a post 48 x 4 x 4 ins 2 ft in the ground for 65th Mile post marked

65th on E + N.R. and S. faces from

which a pine 6 ins in diam.

bears N 50° E dist 18 lks. A pine 8

ins in diam to N 80° W dist 29 lks.

A pine 4 ins in diam. to S. S 5° W dist

24 lks. A pine 10 ins in diam to S.

S 65° E dist 9 lks each marked

Reservation Boundary 36

of T. R.

109

Willamette Meridian, Oregon.

65th M. N. R. B.S.

Land rolling

Scattering Pine fir & Tamarack
timber & Grass eaten by sheep

June 23-1887

West on 66th Mile

Var 20° 50' E

2.50 Inck Course N.E. - 50

30.00 Top of hill enter prairie + 800

37.50 wave course + descend

40.00 Set a post for 1/2 Mile Cor 2.4 x 4
x 4 ins 2 ft - in the ground mtd
1/2 M. on E. & N.R. on W faces
from which a Tamarack 6 ins
in diam. to N 35° W dist 18 lks
@ Tamarack 4 ins in diam to
S 55° E dist 9 lks each mtd
1/2 M. N. R. B.S.

66.00 Creep Water in holes course N.E. - 600

80.00 Set a post 4.5 x 4 x 4 ins 2 ft in + 400
The ground for 66th Mile Cor

37 Reservation Boundary

110

of T. R.

Willamette Meridian, Oregon.

(8093-10 M.)

Marked 66 Man E. & N. R. and S. faces from which a fir 12 ins in diam to S 85° W dist 31 lks. A fir 10 ins in diam to S 60° W dist 34 lks. A pine 6 ins in diam to S 70° E dist 66 lks each marked. 66 M. N. R. B. D.

Lownd Mountains, 80. chs
Said 3rd date.

Pine fir & Pomerack timber with under brush of same

West on 67th Mill
Var 20° 30' E

300	Summit	+450
2650	Gulch course S.E.	-100
4000	Set a post 48x4x4 ins 24 ins in the ground for 1/2 mile post. Marked 1/2 Man E & N. R. and S. faces from which a fir 6 ins in diam to S 75° W dist 17 lks. A fir 12 ins	

Reservation Boundary ³⁸

of T. R.

Willamette Meridian, Oregon.

111

in diam. to S 45° E dist 42 lks
each marked 1/2 M. U. R. B.S.

8000 Set a post 48 x 4 x 4 ins 2 ft in the
ground for 67th Mile post - mtd.
67th Mile E. & U. R. on N. faces. from
which a pine 16 ins in diam. to
N 52° W dist 85 lks. A fir 12 ins
in diam. to S 50° E dist 118 lks.
A fir 14 ins in diam. to S 15° W
dist 58 lks. A fir 18 ins in diam.
to S 56° E dist 21 lks each m-
arked 67 M. U. R. B.S.

Land mostly level
Soil rocky 4th rate
Pine, fir & Ponderosa Timber.
with considerable fallen timber
& dense under brush 8000 ch
Some bunch grass

Testing compass on a line previously estab-
lished by a observer on T. Lewis and
found to correct.

Reservation Boundary

112

of T.

R.

Willamette Meridian, Oregon.

(8093-10 M.)

West on 6th Mile

Var 17° E

- 4.00 Enter prairie course N.E. & S.W.
- 26.50 Wagon road " " "
- 40.00 Set a basal-stone 14 x 10 x 8 ins
9 ins in the ground for 1/2 mile
stone marked 1/2 man E & N.R. on
N faces from which a pine 16 ins
in diam to S 52° E dist-170 lks
W to 1/2 M.N.R. B.D. to other tree
in limits raised stone ^{around it} mound
- 44.94 Intersect-line bet Tps 2 & S. Rs. 33
& 34 E. at-2280 lks. N of cor. To
Tps 2 & 3 S. Rs 33 & 34 E. Set a post
48 x 4 x 4 ins 2 ft in the ground for
S.W. cor. to Reservation & Closing
Cor on Tp. line marked C.E. N.R.
on N.E. corner mound of stone around it
From this point we run N. on the
Tp. line, as we were getting over
the divide on the Birch creek side

Reservation Boundary

40

113

of T.

R.

Willamette Meridian, Oregon.

20 Enter dense underbrush
 720 1/4 Sec. cor. an E. by Sec. 36 marked it - U. R. an E face
 3506 Set a post - 48 x 4 x 4 ins for 68 miles
 post - marked 68 M. an S + U. R. an E faces
 found a mound of stone around it
 found rolling, soil 3rd grade
Pine + Tamarack timber + ^{dense} brush 5000 chs

North on 69th Mile
 Var. 20° 15' E

1214 Cor. To sec. 25 + 36. marked it - U. R. an E face
 1620 Wagner Road Course S. W
 4000 Set a post - 48 x 4 x 4 ins 24 ins in the
 ground for 1/2 mile post - marked
 1/2 M. an S + U. R. an E. faces. From
 which a pine 8 ins in diam. to S 50 W
 dist 4 1/2 kts. marked 1/2 M. U. R. B.T., a Tam-
 arack 8 ins in diam. to S 85° E dist 3 1/2
 kts marked 1/2 M. U. R. B.T.
 5214 1/4 Sec. cor. an E. by Sec. 25 marked it - U. R. an E face
 8000 Set a post - 48 x 4 x 4 ins 24 ins in

Reservation Boundary

114

of T.

R.

Willamette Meridian, Oregon.

(8093-10 M.)

The ground for 69th Mile
 Post-Mkd 69 M. and S. U. R. and E face
 From which a fir 40 ins in diam.
 Is S 45° E dist 10 kps. a fir 16 ins in
 diam Is. N 40° W dist 140 kps. Each
 mkd 69 M. U. R. B. T. - 600

Land Maintenance 80 ch
 Soil 2nd rate
 Good Pine fir & Fir spruce
 timber with dense underbrush
 in places, & frequent small prairies

North on 70th Mile
 Var. 19° 30' E

- .64 Corner with wagon road - W
- 12.14 cor. To Secs. 24 & 25 mkd. it U. R. and E face
- 20.00 Top of ridge S.W. + 500
- 30.00 Corner " " - 30
- 40.00 Set a basal-stone 18x14x6 ins
 12 ins in the ground for 1/2
 Mile stone marked 1/2 M. and

Reservation Pandora 42

of T.

R.

115

Willamette Meridian, Oregon.

	S + N. R. on E faces, raised a mound of stone around it - + 100	
52.14	24 sec cor on E by sec 24. which I marked N. R. on E faces + 500	
64.40	Common Course S.W. - 600	
70.00	Set a basal stone 18 x 10 x 12 ins 12 ins in the ground for 70 th mile stone Marked 70 M on S + N. R. on E faces	
	Raised a stone mound around it -	
	Loam Mountainous 80. ch	
	Soil Rocky 4 th rate	
	No timber	
	Good bunch grass	

Reservation Boundary

of T. _____ R. _____

Willamette Meridian, Oregon.

(8093-10 M.)

North on 77th Mile

Var 22° E

12.14 cor. To secs 13 + 24. which I marked
U.R. on E. face

34.10 Daly wagon road course N.W. + S.E.

Set a post - 36 x 3 x 3 ins 12 ins in

The ground for 7th angle cor.

Marked U.R. on E face + raised a

stone mound around it pits Imprac

Thence I run S 50° W down divide

side between McWay (Howlome)

+ Birch creeks

5.90 set 1/2 mile stone 10 x 10 x 10 ins 6

ins in the ground marked 1/2 M.

on S + W.R. on N faces. raised a

stone mound around it

45.90 set a Basalt stone 10 x 10 x 10 ins

6 ins in the ground for 77th Mile
and 2nd angle cor. L2

stone, Mk'd. 71 M on S + W.R. on N

faces. raised a stone mound around

it pits Impracticable

Land } mountainous 34.10 chs.
balance level, soil rocky 4th rate
no grass or timber June 24th 1887

FINAL OATHS FOR SURVEYS.

162 A list of the names of the individuals employed by James P. Currier and James E. Roland, U. S. Deputy Surveyor, to assist in running, measuring, and marking the lines and corners described in the foregoing field notes of the survey of the Reservation Boundary lines of

Willamette Meridian, Oregon, showing the respective capacities in which they acted:

- J. W. Henry, Compassman.
J. S. Medley, Chainman.
W. H. Medley, Chainman.
Frank Belshaw, Chainman.
B. Rush, Axman.
H. Veatch, Axman.
Flagman.

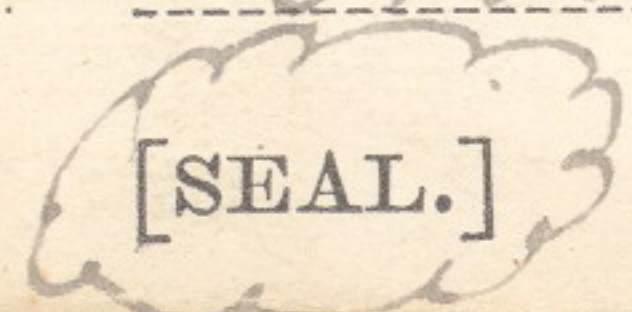
FINAL OATHS OF ASSISTANTS.

We hereby certify that we assisted James P. Currier and James E. Roland, U. S. Deputy Surveyor, in surveying all those parts or portions of the Reservation Boundary of

Willamette Meridian, Oregon, as represented in the foregoing field notes as having been surveyed by him and under his direction; and that said survey has been in all respects, to the best of our knowledge and belief, well and faithfully surveyed, and the corner monuments established, according to the instructions furnished by the U. S. Surveyor General of Oregon.

- J. W. Henry, Compassman.
J. S. Medley, Chainman.
W. H. Medley, Chainman.
Frank Belshaw, Chainman.
B. Rush, Axman.
H. Veatch, Axman.
Flagman.

Subscribed and sworn to before me this Fifth day of November, 1887.



James E. Roland, U. S. Deputy Surveyor

FINAL OATH OF DEPUTY SURVEYOR.

We James P. Curran and James E. Poland United States
 Deputy Surveyor, do solemnly swear that in pursuance of instructions
 received from Douglas H. Taylor, U. S.
 Surveyor General for Oregon, bearing date of the 13th
 day of May, 1887, I have well, faithfully,
 and truly, in ~~my~~ own proper person, and in strict conformity with the
 instructions furnished by the U. S. Surveyor General for Oregon, the
 Surveying Manual, and the laws of the United States, surveying all
 those parts or portions of Reservation Boundary

Willamette Meridian, in the State of Oregon, as are represented in the
 foregoing field notes as having been surveyed by me and under my
 directions; and I do further solemnly swear that all the corners of said
 survey have been established and perpetuated in strict accordance with
 the Surveying Manual, printed instructions, the special written instruc-
 tions of the U. S. Surveyor General for Oregon, and in the specific man-
 ner described in the field notes, and that the foregoing are the *true* field
 notes of such survey, and should any fraud be detected I will suffer the
 penalty of perjury under the provisions of an act of Congress approved
 August 8, 1846.

James P. Curran, & James E. Poland
 U. S. Deputy Surveyor.

Subscribed and sworn to before me this Fifteenth
 day of February, 1888

Alex Woodcock
 Notary Public
 for Oregon

Office of U. S. Surveyor General,

Portland, Oregon, Sept 20th, 1888

The ~~following~~ ^{foregoing} Field Notes of the Survey of ~~the~~
 a portion of Boundary line
 of the Umatilla Indian
 Reservation in Oregon
 executed by James P. Currier and James E. Nola
 Special Joint U. S. Dept Surveyors.
 under ~~his~~ Contract No., dated May
 4th, 1887, having been critically examined,
 the necessary corrections and explanations made, the
 said Field Notes and the survey they describe, are
 hereby approved.

Douglas W. Taylor -

Surveyor General.