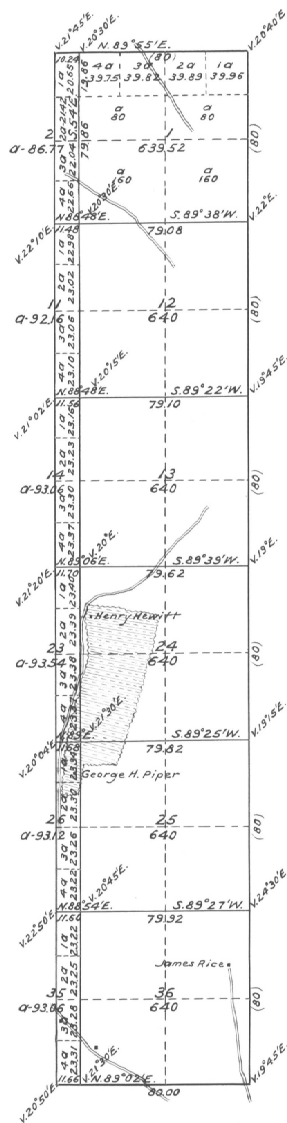


Township No. 2 South, Range No. 30½ East, Willamette Meridian, Oregon.

General Description

The surface is mostly nearly level; a small part is rolling. The greater part of the soil is either 1st or 2^d rate, and is excellent for wheat and other small grain.

Total Acres 4591.23

Deposited to Credit of United States
in the 1st National Bank, Portland, Oregon,
Dec. 7, 1878, by George H. Piper.
For Field Work \$85.00
do Office do \$15.00
Total \$100.00



Scale: 40 Chains to an inch.

Lines	Contractor	Contract		Amount Surveyed			Commenced	Completed
		No.	Date	Miles	Chains	Links		
Subdivisions	George S. Pershin	313	Dec. 7, 1878	11	55	42	Dec. 26, 1878	Dec. 28, 1878
Exteriors	do do do	do do do do	do do do do					

The above Map of the subdivisional lines of Township No. 2 South, Range No. 30½ East, Willamette Meridian, Oregon, is strictly conformable to the original field notes of the survey thereof on file in this office, which have been examined and approved.
U. S. Surveyor General's Office,
Portland, Oregon,
Jan'y. 25, 1878.

(signed) James C. Tolman,
Surveyor General of Oregon.

Public Survey Office,
Portland, Oregon,
September 9, 1935.

I certify this to be a correct copy
of the original plat on file in this
office.
Joseph A. Searcy,
Official Cadastral Engineer.