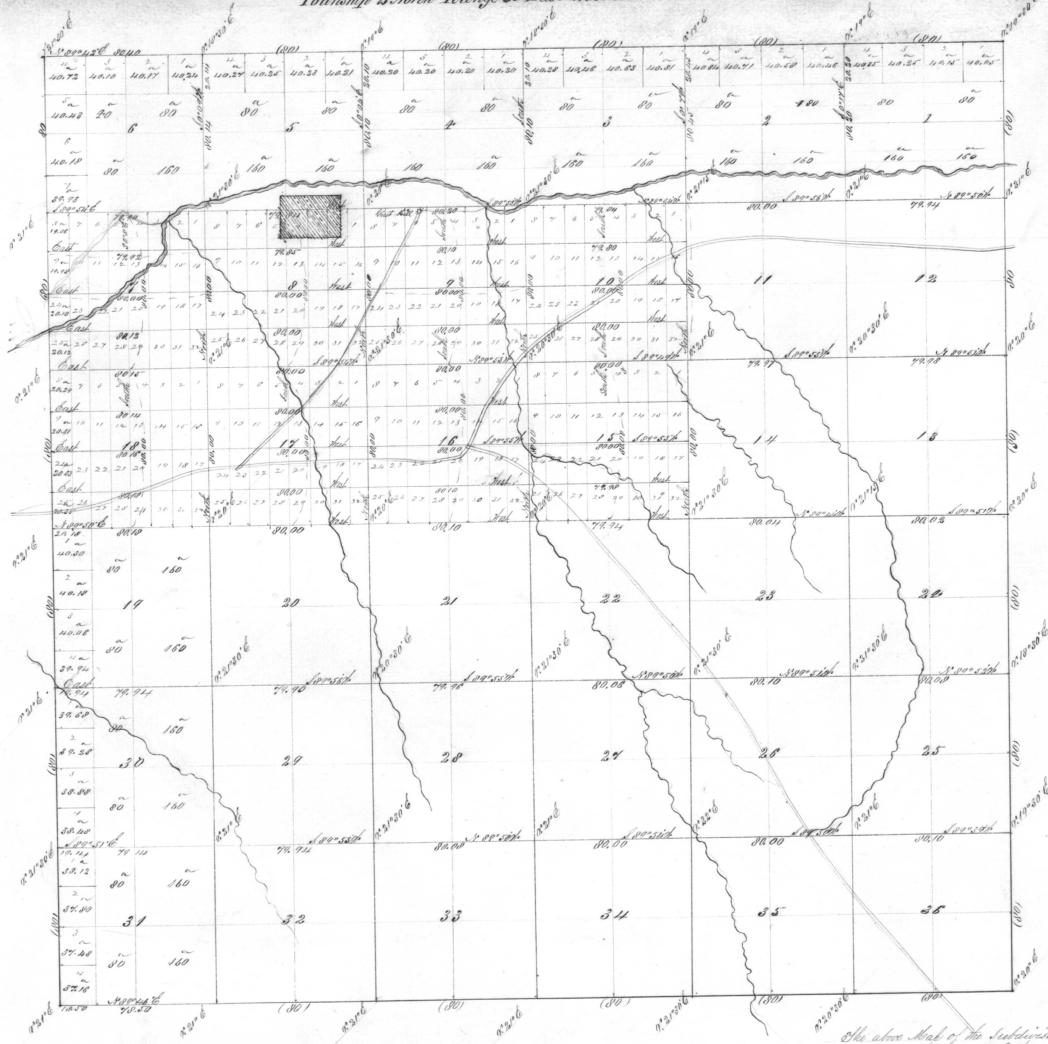


Township 2 North Range 32 East Will. Ill.

U.I.R.  
7

4254

Area of Selling	
Sections	Area
7	640.16
8	640.00
9	640.00
10	640.00
14	640.00
15	640.00
17	640.00
20	640.00
<b>Total</b>	<b>4,531.20</b>
Total Subdivisions 1894. 47	



General Description  
The north 1/2 of the section is  
a good tillable land; the  
south 1/2 is adaptable to grazing.

Map illustration  
from survey of 1892  
Scale 100 chains to an inch

Lines Subdivisions	Contractor	No	Contract		Acre		Commenced	Completed
			date	not taxed	to claim	to claim		
	Jones & Hoody	182	October 4 1894	53	00	50	November 22 1894	Nov 20 1894

See above Map of the Subdivisions of Sections 7, 8, 9, 10, 14, 15, 17, 18, 19 and 20 in 32<sup>d</sup> Range Will. Ill. and Oregon east 30<sup>th</sup> 100<sup>th</sup> 10<sup>th</sup> is hereby confirmed to the original field notes of the survey filed on file in this Office which have been examined and approved.  
Superior Annual Office  
Chicago City  
April 21<sup>st</sup> 1892

W. H. Child  
Sur. Gen. of Oregon