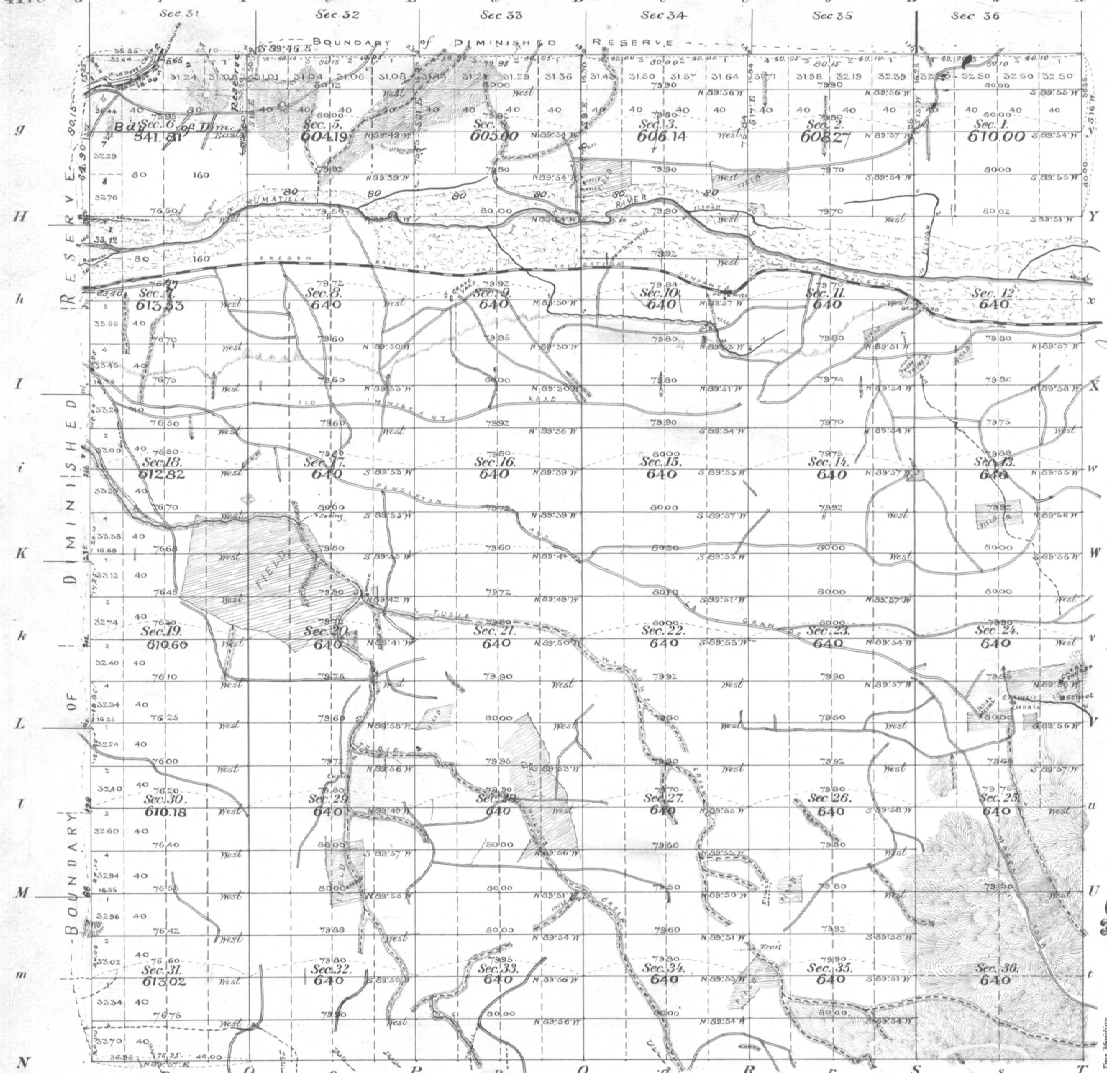


Township No. 2 North Range No. 33 East Willamette Meridian Oregon

4170



ACCEPTED BY THE HON. COMMISSIONER G. L. O. Secy. 2, 1890

Poles	Courses	Ch. Lk's	Poles	Courses	Ch. Lk's	Poles	Courses	Ch. Lk's

Number of Acres within Diminished Reserve 22,388.80 Number of Acres outside of Diminished Reserve 226.76 Number of Acres of Allotments 18245.63 Total number of Acres 22,635.56

Survey Designated	By Whom Surveyed	Date of Contract	Amount of Survey	When Surveyed	Magn. Declination
Township lines Subdivisions Connections	Carran & Noland	May 4 <sup>th</sup> 1887	155.57.03	Aug. 23 to Oct. 28, 1887	20° 00' E
			22.85		

The above Map of Township No. 2 North, of Range No. 33 East Willamette Meridian, Oregon is shewn conformable to the field notes of the survey thereof on file in this Office, which have been examined and approved.

Douglas W. Taylor  
Sur. Gen!

Surveyor General's Office  
Portland, Oregon June 14, 1890