

TOWNSHIP 2 NORTH, RANGE 33 EAST, OF THE WILLAMETTE MERIDIAN, OREGON

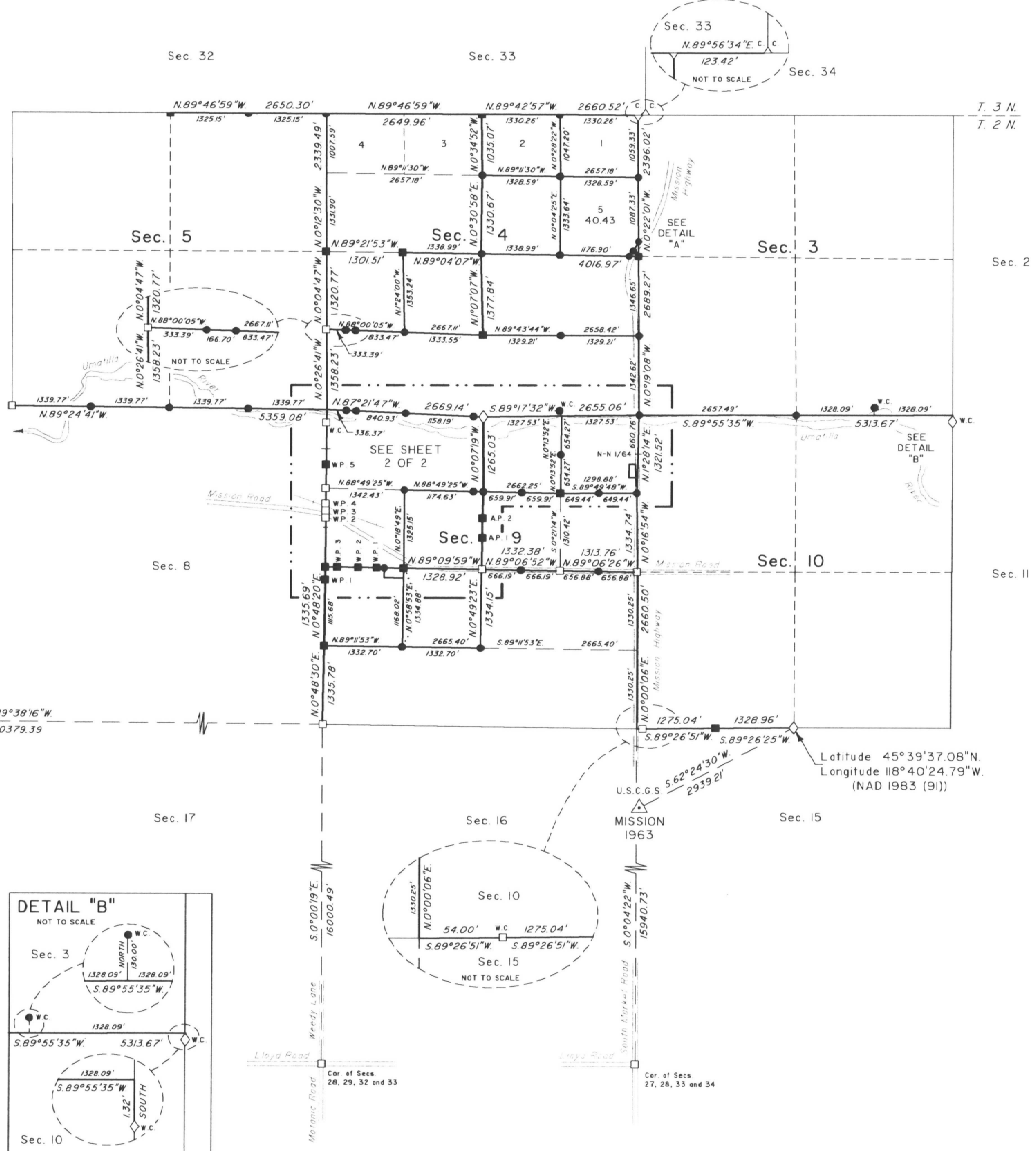
SHEET 1 OF 2

DEPENDENT RESURVEY, SUBDIVISION OF SECTIONS 4 AND 9 AND SURVEY



Mean magnetic declination 20° East

Cor. of Sec. 1 & 18 only



A history of surveys is confined in the field notes.

This plat represents a dependent resurvey of portions of the north boundary, subdivision lines, and subdivision-of-section lines of sections 4 and 9, T. 2 N., R. 33 E., Willamette Meridian, Oregon, designed to restore the corners in their true original locations according to the best available evidence, and the subdivision of sections 4 and 9 and metes-and-bounds surveys in sections 4 and 9.

Measured distances and directions have been adjusted by Cadastral Measurement Management for Windows (WinCMM), computer software that incorporates a least squares adjustment routine. The adjusted bearings and distances are reported to the nearest second and 0.01 foot.

Except as shown hereon, the lottings and areas are as shown on the plat approved June 14, 1890.

The survey was executed by Bryan S. Seibold, Cadastral Surveyor, beginning August 21, 2003, and completed May 13, 2004, pursuant to Special Instructions dated August 21, 2003, under Group Number 2062, Oregon.

Timber in this area consists of cottonwood.

The tie to the geodetic control station is reported as mean bearing and sea level distance.

LEGEND

- ◊ Original corner previously monumented
- Corner previously restored, established or reestablished
- Corner previously restored, established or reestablished; monumented this survey
- Corner established or reestablished this survey

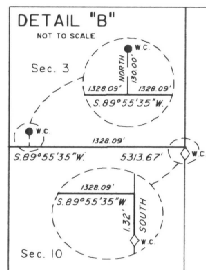
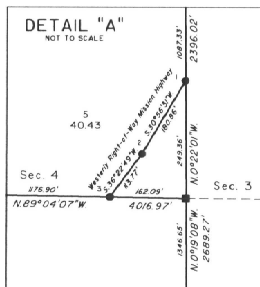
UNITED STATES DEPARTMENT OF THE INTERIOR
BUREAU OF LAND MANAGEMENT

Portland, Oregon June 1, 2005

This plat is strictly conformable to the approved field notes, and the survey, having been correctly executed in accordance with the requirements of law and the regulations of this Bureau, is hereby accepted.

For the Director

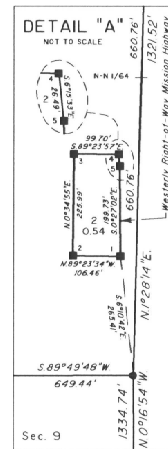
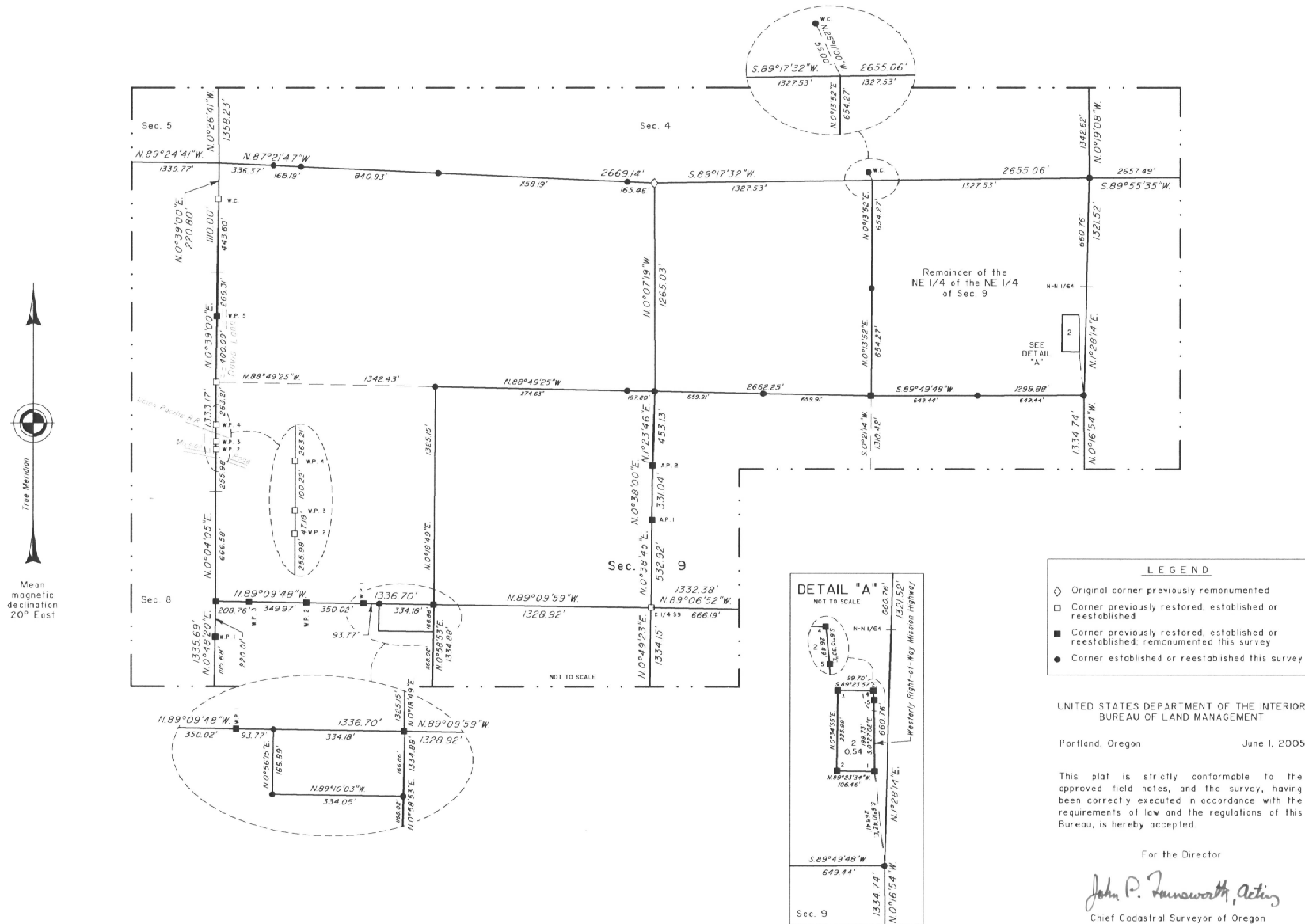
John P. Hancock, Acting
Chief Cadastral Surveyor of Oregon



TOWNSHIP 2 NORTH, RANGE 33 EAST, OF THE WILLAMETTE MERIDIAN, OREGON

SHEET 2 OF 2

DEPENDENT RESURVEY, SUBDIVISION OF SECTIONS 4 AND 9 AND SURVEY



LEGEND

- ◊ Original corner previously remonumented
- Corner previously restored, established or reestablished
- Corner previously restored, established or reestablished; remonumented this survey
- Corner established or reestablished this survey

UNITED STATES DEPARTMENT OF THE INTERIOR
BUREAU OF LAND MANAGEMENT

Portland, Oregon June 1, 2005

This plat is strictly conformable to the approved field notes, and the survey, having been correctly executed in accordance with the requirements of law and the regulations of this Bureau, is hereby accepted.

For the Director

John P. Farnsworth, Acting
Chief Cadastral Surveyor of Oregon