

TOWNSHIP 1 SOUTH, RANGE 36 EAST, OF THE WILLAMETTE MERIDIAN, OREGON

SHEET 1 OF 2

DEPENDENT RESURVEY AND SURVEY

A history of surveys is contained in the field notes.

This plot represents a dependent resurvey of a portion of the subdivision lines and a portion of the subdivision of section lines of sections 5 and 8, T. 1 S., R. 36 E., Willamette Meridian, Oregon, designed to restore the corners in their true original locations according to the best available evidence, and the metes-and-bounds survey of a portion of the westerly right-of-way of the Union Pacific Railroad in sections 5 and 8.

Measured distances and directions have been adjusted by Cadastral Measurement Management (CMM), and Trimble Geomatics Office (TGO), computer software that incorporates a least squares adjustment routine. The adjusted bearings and distances are reported to the nearest second and 0.01 foot.

Except as shown hereon, the lottings and areas are as shown on the plat approved March 31, 1883.

The survey was executed by Richard S. Keiser, Cadastral Surveyor, beginning June 7, 2005, and completed August 16, 2005, pursuant to Special Instructions dated June 3, 2005, under Group Number 2120, Oregon.

Timber in the area consists of fir, pine and larch.

At the request of the U.S. Forest Service, the true area for each quarter-quarter section is reported for all lands under their jurisdiction. Where the true area is within 5% of the record area, the quarter-quarter section will retain its aliquot part designation even though the area changes. The quarter-quarter section will continue to be divided by legal subdivision. Where the record area changes by more than 5% or the quarter-quarter section is badly distorted, it has been assigned a lot number and may be further divided only by supplemental plat.

NOTE: The light-weight section lines were resurveyed and subdivision of section lines were surveyed by Lawrence D. Holmes, in 1983-85.

LEGEND

- Corner previously established or reestablished
- Corner established or reestablished this survey

UNITED STATES DEPARTMENT OF THE INTERIOR
BUREAU OF LAND MANAGEMENT

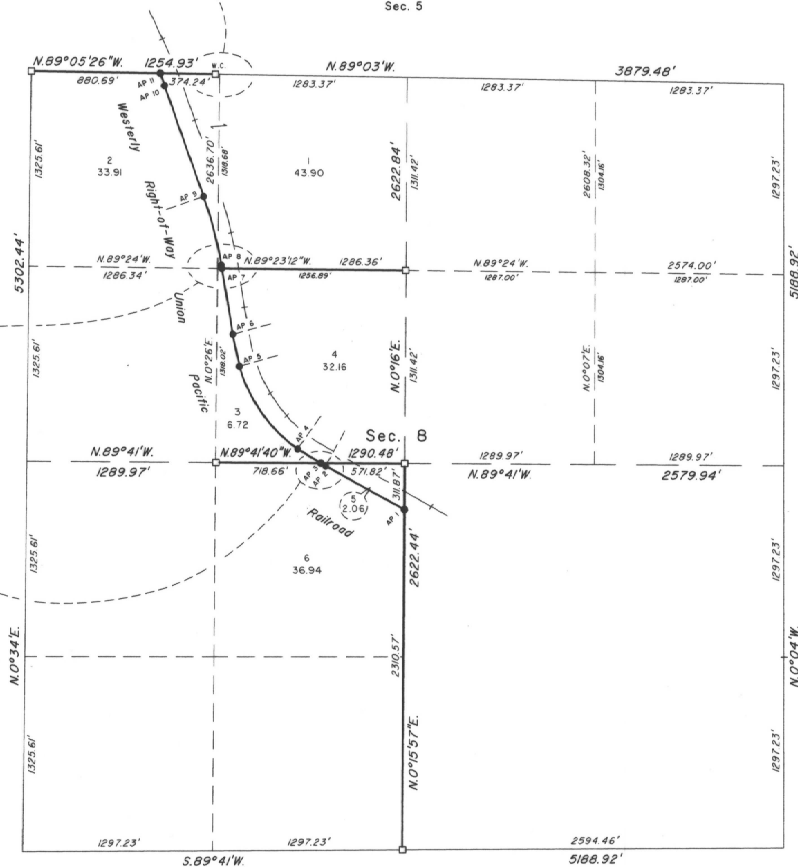
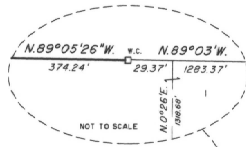
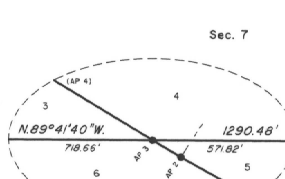
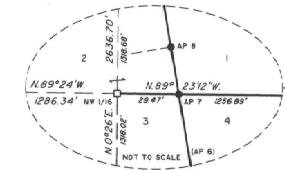
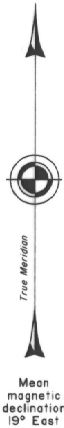
Portland, Oregon July 11, 2006

This plot is strictly conformable to the approved field notes, and the survey, having been correctly executed in accordance with the requirements of law and the regulations of this Bureau, is hereby accepted.

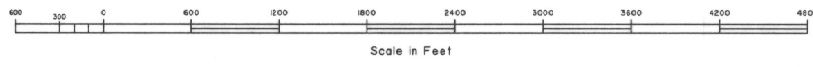
For the Director

Mary J. M. Havel

Chief Cadastral Surveyor of Oregon



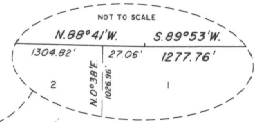
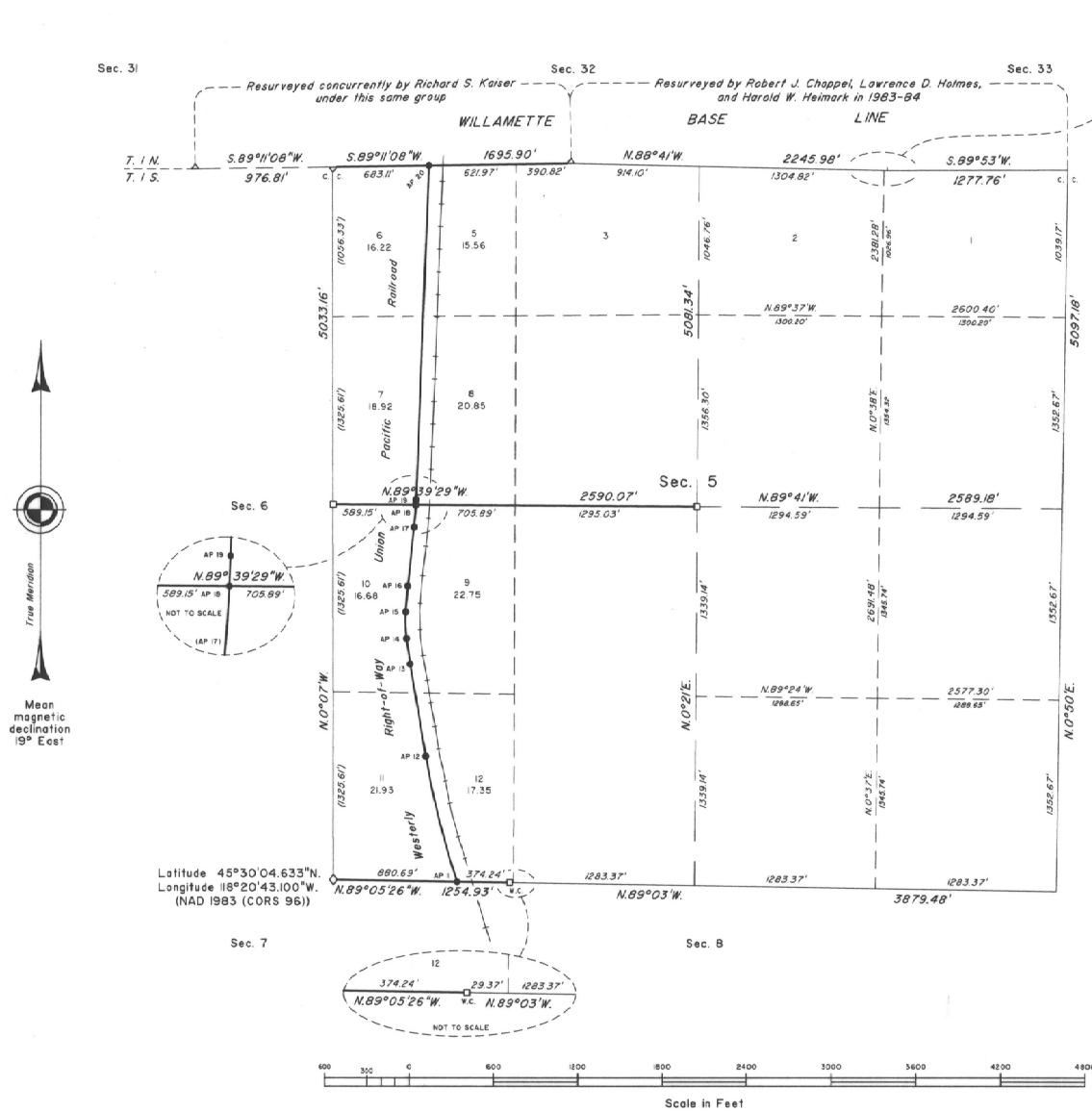
BEARING & DISTANCE TABLE		
Metes-and-Bounds Survey		
Westerly Right-of-Way of Union Pacific Railroad		
● AP 1	N. 61° 12' 27" W.	64.05'
● AP 2	Spiral Long Chord = N. 59° 15' 30" W.	37.49'
	(centerline data: α = 2° 52' 58", Δ = 6' 27" 14", L = 211.60')	
● AP 3	Spiral Long Chord = N. 58° 55' 54" W.	185.21'
	(centerline data: α = 2° 52' 58", Δ = 6' 27" 14", L = 211.60')	
● AP 4	Δ = 38° 41' 54"	R = 1039.28' L = 701.94'
● AP 5	Spiral Long Chord = N. 10° 47' 36" W.	222.70'
	(centerline data: α = 2° 52' 58", Δ = 6' 27" 14", L = 211.60')	
● AP 6	N. 9° 35' 29" W.	452.78'
● AP 7	N. 9° 35' 29" W.	23.22'
● AP 8	Δ = 9° 59' 00"	R = 2764.79' L = 481.74'
● AP 9	N. 19° 34' 33" W.	799.70'
● AP 10	Δ = 0° 52' 35"	R = 5829.56' L = 89.18'
● AP 11		
● AP 12		



TOWNSHIP 1 SOUTH, RANGE 36 EAST, OF THE WILLAMETTE MERIDIAN, OREGON

SHEET 2 OF 2

DEPENDENT RESURVEY, AND SURVEY



BEARING & DISTANCE TABLE
Metes-and-Bounds Survey
Westerly Right-of-Way of Union Pacific Railroad

● AP 11	Δ = 8°59'21"	R = 5829.56'	L = 914.60'
● AP 12			
● AP 13	N.9°42'37"W.	661.20'	
● AP 14	Spiral LongChord = N.8°22'00"W. 162.88'		
	(centerline data: α = 2°36'49", Δ = 4°02'53", L = 175.00')		
● AP 15	Δ = 8°0'21"	R = 1345.56'	L = 188.40'
● AP 16	Spiral LongChord = N.4°42'51"E. 162.88'		
	(centerline data: α = 2°36'49", Δ = 4°02'53", L = 175.00')		
● AP 17	Δ = 3°16'04"	R = 2764.79'	L = 157.66'
● AP 18	Δ = 0°38'53"	R = 2764.79'	L = 31.28'
● AP 19	N.2°08'30"E.	2363.88'	
● AP 20			

NOTE: The light-weight section lines were resurveyed and subdivision of section lines were surveyed by Lawrence D. Holmes, in 1983-85.

LEGEND

◇	Original corner previously remonumented
□	Corner previously established or reestablished
●	Corner established or reestablished this survey

UNITED STATES DEPARTMENT OF THE INTERIOR
BUREAU OF LAND MANAGEMENT
Portland, Oregon July 11, 2006

This plot is strictly conformable to the approved field notes, and the survey, having been correctly executed in accordance with the requirements of law and the regulations of this Bureau, is hereby accepted.

For the Director
Mary J. M. Hestel
Chief Cadastral Surveyor of Oregon