

FIELD NOTES

Of the survey of the Reservation Boundary

Lines of

Willamette Meridian, Oregon,

as surveyed by James P. Carrin and James Edoland

their special

U. S. Deputy Surveyor, under his Contract No. _____

dated May 4th, 1887

Survey commenced, June 15th, 1887

Survey completed, November 5th, 1887

NAMES AND DUTIES OF ASSISTANTS.

_____, Compassman.
J. M. Henry, Chainman.
J. S. Medley, Chainman.
W. H. Medley, Chainman.
Frank Belshaw, Chainman.
R. Rush, Axman.
A. Keatch, Axman.
 _____, Flagman.

PRELIMINARY OATHS OF ASSISTANTS.

We, *W. Henry, J. S. Medley, W. H. Medley and Frank Belshaw*

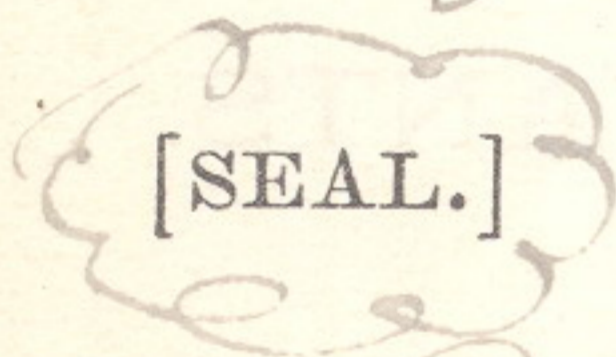
do solemnly swear that we will faithfully execute the duties of Chain Carriers; that we will level the chain over even and uneven ground, and plumb the tally pins, either by sticking or dropping the same; that we will report the true distance to all notable objects, and the true length of all lines that we will assist in measuring, to the best of our skill and ability, and in accordance with the instructions given us in the survey

of the *Reservation Boundary* lines of

Willamette Meridian, Oregon.

J. W. Henry, Chainman.
J. S. Medley, Chainman.
W. H. Medley, Chainman.
Frank Belshaw, Chainman.

Subscribed and sworn to before me this *15th* day of *June*, 188*7*



James E. Noland
U. S. Dept. Surveyor

We, *R. Rush* and *H. Neatch*, do solemnly

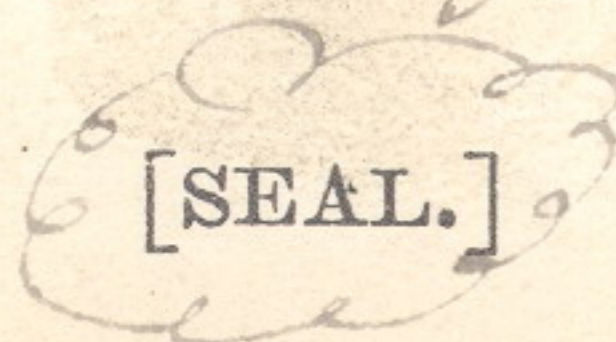
swear that we will well and truly perform the duties of Axmen in the establishment of corners and other duties, according to instructions given us, and to the best of our skill and ability, in the survey of the

Reservation Boundary

Willamette Meridian, Oregon.

R. Rush, Axman.
H. Neatch, Axman.

Subscribed and sworn to before me this *Fifteenth* day of *June*, 188*7*



James E. Noland
U. S. Dept. Surveyor

R 32 E

R 33 E

T 4 N. R 34 E

R 35 E

R 36 E

63

T 3 N.

T 2 N.

T 1 N.

BASE LINE

T 1 S

T 2 S

62

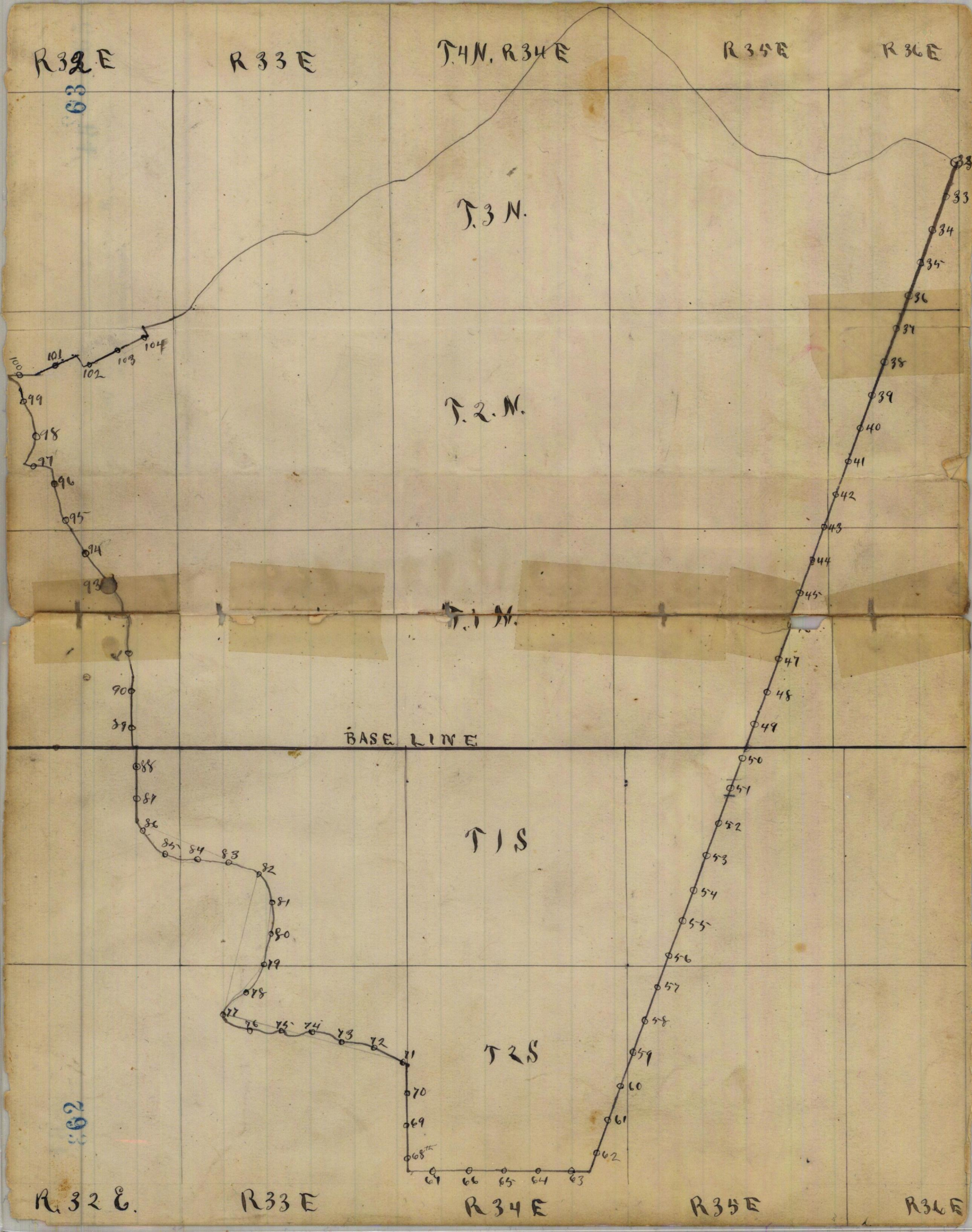
R 32 E.

R 33 E

R 34 E

R 35 E

R 36 E



19
Reservation Boundary 89

of T. R.

Willamette Meridian, Oregon.

Ch

41-

South 20th an 49th Mile
Var 20th

400 Spring Branch 1^{1/2} mile wide course W

4000 Set a post-48x4x4 ins 24 ins

in the ground for 1/2 mile

post-marked 1/2 Mile N &

U. R. on W faces, raised a

mound of stone around it-

5000 Set a post-48x4x4 ins 24 ins

in the ground for 49th Mile

post-marked 49. Mile N &

U. R. on W. faces. From which

a Black Pine 8 ins in diam to

N 60th dist-25 lks. Marked

49 M. U. R. B. T. a pine

4 ins. in diam to, N 45th E

dist-16 lks. Marked 49.

M. U. R. B. T.

No other trees in limits-

Raised a mound of stone

around post- Pile impracticable

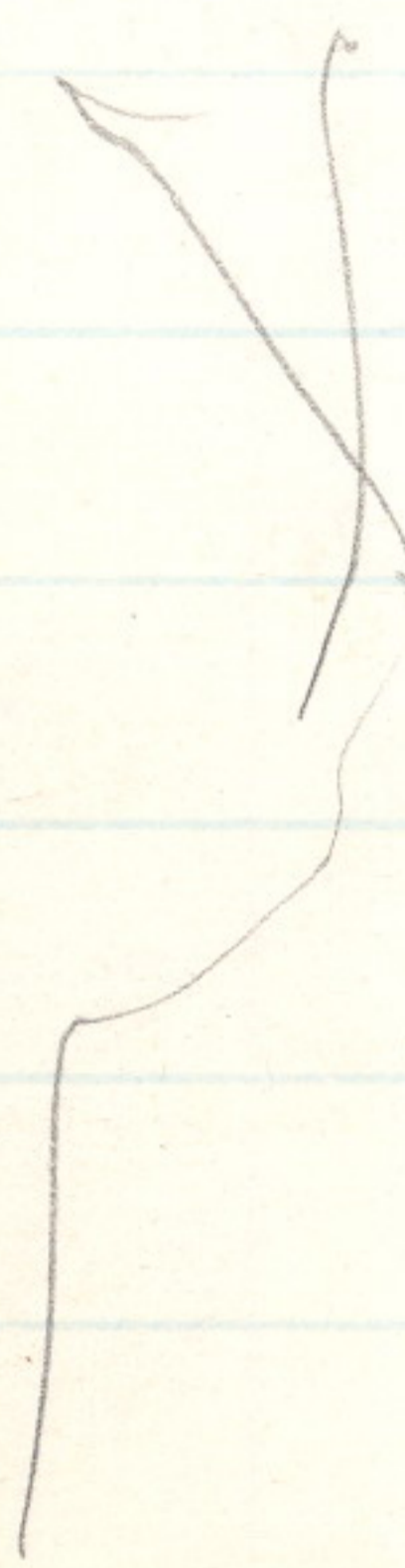
20

90 Reservation Boundary

of T. R.

Willamette Meridian, Oregon.

cho (8093-10 M.)



Land rolling
 Soil light - 2nd rate
 Pine, Fir, Tamarack & Spruce
 Timber under brush of
 The same x 70. chz dense
 Frequent - small openings
 Poor grass, in timber
 Good bunch grass in
 openings

Reservation Boundary 18
91

of T. R.

Willamette Meridian, Oregon.

South 20° N on 50th Mile

Var. $20^{\circ}15'E$

40.00 Set a Bossalt stone $16 \times 16 \times 10$ ins 9 ins
in the ground for $\frac{1}{2}$ mile stone mkd.
 $\frac{1}{2}$ M on S + N. Run W faces from which
A pine 16 ins in diam. to S 60° N dist
18 lks A pine 8 ins. to S 80° E dist - 12 lks
Each marked $\frac{1}{2}$ M. N. R. B.S.

46.50 Spitch Course E - 30

80.00 Set a Bossalt stone $20 \times 14 \times 6$ ins 15
ins in the ground for 50th Mile
stone mkd. 50 M on S + N. Run W faces
From which a Black pine 8 ins in diam.
to S 80° N dist 40 lks. A Black pine
8 ins in diam to S 20° N dist - 30 lks
Each marked 50 M. N. R. B.S.

Land rolling

Sail good rate,

Black pine much of it fallen
with ^{dense} under brush of same 80. chs

No grass

June 18 - 1887

19

Reservation Boundary

92

of T. ----- R.

Willamette Meridian, Oregon.

(8093-10 M.)

South 20° 7' on 5¹/₂ Mile
Var 19° 15' E

- 11.50 Intersect Base line 3.00 E of $\frac{1}{4}$ sec cor
and S bdy of sec. 34 T. 1 N R. 35 E. Will-
amette meridian *
- 13.75 Old Emigrant road N.W.
18.50 creek 10 lks. wide course E
- 40.00 Set a post - 48 x 4 x 4 ins 24 ins in the ground
for $\frac{1}{2}$ Mile post mkd $\frac{1}{2}$ M and face + U.R.
an W face from which a Black pine 12 ins
to S 30° W dist 13 lks a Black pine 8 ins
in diam. to S 40° E dist 16 lks. each
marked $\frac{1}{2}$ M. N. R. B.P.
- 51.25 Pendleton + La. Grande road S.W.
- 61.50 old wood road
- 67.78 found old 5¹/₂ Mile post which I destroy
- 80.00 Set a post - 48 x 4 x 4 ins 24 ins in
The ground for 5¹/₂ Mile post -
Marked 5¹/₂ M on S + U. R. on W
faces from which a Black pine
8 ins in diam to S 40° W dist 5 lks

and marked a black pine 92A

6 ins. in diameter U. R. C. C on west

face for closing corner

from which

a black Pine 10 ins in diameter

bears N. 30° W. 9 lbs. dist. marked
with C. G. B. J.

a Black Pine 12 ins in diam.

bears S 55° W. 25 links dist marked

U. R. A. C. B. T.



Reservation Boundary²⁰

93

of T. R.

Willamette Meridian, Oregon.

A Black pine 6 ins in diam to N.
20°E dist-31 lks A Black pine 10
ins in diam to S 60°E dist-36 lks
Each Marked 51 M. N. R. B.P.

Land level, soil 2nd rate
Scattering pine + spruce timber
with dense underbrush of same 80. ch

South 2077 on 52nd Mile
Var 18°E

11.50 Macham Creek 15 lks Course N.E. -30

40.00 Set a post 48x4x4 ins 24 ins in the ground
for 1/2 mile post-marked 1/2 M. N. R. B.P.
an W faces from which a Black pine
6 ins in diam. to S 50°W dist-38 lks.

A Black pine 6 ins in diam to S 8°E dist-
25 lks each Mkd. 1/2 M. N. R. B.P.

60.00 Enter prairie

64.00 Leave "

80.00 Set a post-48x4x4 ins 24 ins in the
ground for 52nd mile post-Mkd. 52 M.
an N + N.R. an W. faces. from

21. Reservation Boundary

94

of T. R.

Willamette Meridian, Oregon.

(8093-10 M.)

* Test my compass on a line established by an observation on Polaris and find it to be correct.

which a black pine 12 ins in diam. to N 20° E dist 15 lks A spruce 6 ins in diam to S 50° W dist 38 lks A pine 16 ins in diam. to S 35° W dist 25 lks. Each 1/2 M. U. R. B. D.

Land level + Soil 2nd rate Pine + Spruce timber with dense under brush of same + Good grass

South 20° W on 50rd Mile Var 21 East

- 115 Macham creek 15 lks wide S.W.
- 40.00 Set a basal stone 20 x 12 x 8 ins 16 ins in the ground for 1/2 Mile stone mtd 1/2 M. U. R. B. D. W. faces. from whi a pine 20 ins in diam. to S 55° E dist 65 lks mtd. 1/2 M. U. R. B. D. raised a stone mound along side cut
- 56.00 Wagon road Course S. E.
- 80.00 Set a post 48 x 4 x 4 ins 2 ft in the ground for 50 Mile post - mtd

Reservation Boundary 22

of T. R.

95

Willamette Meridian, Oregon.

53 Man N & N. R. on W face, frame
which a pine 14 ins in diam. to N 30°
W dist 9 lks A pine 8 ins in diam. to N
30° E dist 15 lks A pine 10 ins in diam. to
S 70° E dist 10 lks A pine 12 ins in diam
to S 32° W dist 38 lks all marked 53
M. U. R. B. T.

Low rolling soil good rate
Dense undergrowth of pine mo-
untain bluem & willow 89. ch₃

South 20° W on 5th Mile
Var 23° 30' E

750 Wagon road course S. E.

4000 Set a post 4x4x4 ins 2 ft in the
ground for 1/2 mile post marked
1/2 Man N & N. R. on W face, frame
which a pine 8 ft in diam. to
N 50° E dist 39 lks. A pine 10 ins
in diam to N 70° W dist 38 lks.
Each marked 1/2 M. U. R. B. T.

23
96

Reservation Boundary

of T. _____ R. _____

Willamette Meridian, Oregon.

(8093-10 M.)

Recd

8000 Spruce Tree 6 ins in diam which
 I mtd for 54th mile cor - 54th M
 are N & W.R. on W faces from
 which a Tamarack 6 ins in diam.
 by N 30° E dist 18 kts. A Tama-
 rack 6 ins in diam. by S 46° W
 dist 13 kts. A Tamarack 12 ins
 in diam by S 28° E dist 18 kts
 each marked 54th M. N. R. B.S.

Low rolling Hills.

Soil 2nd rate

Pine Tamarack & Spruce
 Timber with dense undergr-

rowth of same 80. chz

June 20 - 1887

Resurvey Boundary

24

97

..... of T. R.
 Willamette Meridian, Oregon.

South 20° W on 55th Mile
 Var 19° E

- | | | |
|------|---|-------|
| 2400 | Top of hill enter prairie | + 600 |
| 4000 | Set a post 48x4x4 ins 2 ft in
The ground for 55 th Mile
post-Marked 1/2 M on N + N.R.
on W face. From which a pine
18 ins in diam bears N 5° W dist
72 yds. A pine 12 ins in diam to
N 85° E dist 56 yds each marked
1/2 M. U.R. B.D. | |
| 4850 | Ravine Course E | - 50 |
| 5500 | Summit " " | + 200 |
| 6100 | descend | |
| 8000 | Set a basal stone 20x10x8 ins 15
ins in the ground for 55 th Mile
Stone Mkd. 55 M on N + N.R. on W
edges raised a stone mound
around stone | - 600 |
| | Land Main ^{80 chs} Firms Soil 3 rd gate
Scattering pine & Tamwarack & underbrush | |

25
98

Reservation Boundary

of T. _____ R. _____

Willamette Meridian, Oregon.

(8093-10 M.)

South 20° W on 56th Mile
Var 19° 45' E

descend

- 1700 Ravine -500
-500
- 2925 McKay Creek 150 yds wide W -2000
-2000
- 4000 Set a Basalt stone 10x10x10 ins
6 ins in the ground for 1/2 mile
stone marked 1/2 mile N + U. R
on W faces raised stone mound ^{around it}
- 4300 Top of sharp ridge course N W +500
+500
- 6300 Creek 100 yds wide course N. W. -500
-500
- 8000 Set a basalt stone 20x12x12 ins
15 ins. in the ground for 56th mile
Marked 56th mile N + U. R. on W
faces, raised stone mound over it 80 yds
Land very rough + Manulimans
Soil rocky 4th gate
Dine fir + Lam arack timber of
poor quality Inaccessible for
milling purposes

Reservation Boundary

26

99

of T.

R.

Willamette Meridian, Oregon.

Sawtooth^{20^W} 5-7th Mile

Var 21° 45' E

3150 Top of Mountain + 2500

4000 A fir 5 ins in diam. which I
marked for 1/2 M. Cor. 1/2 M on
N + U. R. on N faces. From which
a pine 4 ins. in diam to N 18^W
dist 7 lks. A pine 6 ins. in diam
to S 85° E dist 13 lks each marked
1/2 M. U. R. B. T.

8000 A black pine 10 ins in diam. w^h
ich I marked for 5-7th Mile
Cor. 5-7 M on N + U. R. on W. face
From which ^{a fir} 6 ins in diam. to N
10^W dist 9 lks. A fir 8 ins in diam
to N 25° E dist 13 lks. A fir
6 ins in diam to S 38° E dist 23 lks
A fir 24 ins in diam to S 40^W
dist 28 lks - each marked,
5-7 M. U. R. B. T. Land 10000 ch₃
Soil 4th rate Pine, fir & Fir timber

FINAL OATHS FOR SURVEYS.

162 A list of the names of the individuals employed by James P. Currier and James E. Roland, U. S. Deputy Surveyor, to assist in running, measuring, and marking the lines and corners described in the foregoing field notes of the survey of the Reservation Boundary lines of

Willamette Meridian, Oregon, showing the respective capacities in which they acted:

- J. W. Henry, Compassman.
J. S. Medley, Chainman.
W. H. Medley, Chainman.
Frank Belshaw, Chainman.
B. Rush, Axman.
H. Veatch, Axman.
Flagman.

FINAL OATHS OF ASSISTANTS.

We hereby certify that we assisted James P. Currier and James E. Roland, U. S. Deputy Surveyor, in surveying all those parts or portions of the Reservation Boundary of

Willamette Meridian, Oregon, as represented in the foregoing field notes as having been surveyed by him and under his direction; and that said survey has been in all respects, to the best of our knowledge and belief, well and faithfully surveyed, and the corner monuments established, according to the instructions furnished by the U. S. Surveyor General of Oregon.

- J. W. Henry, Compassman.
J. S. Medley, Chainman.
W. H. Medley, Chainman.
Frank Belshaw, Chainman.
B. Rush, Axman.
H. Veatch, Axman.
Flagman.

Subscribed and sworn to before me this Fifth day of November, 1887

[SEAL.]

James E. Roland U. S. Deputy Surveyor

FINAL OATH OF DEPUTY SURVEYOR.

We James P. Curran and James E. Poland United States
 Deputy Surveyor, do solemnly swear that in pursuance of instructions
 received from Douglas H. Taylor, U. S.
 Surveyor General for Oregon, bearing date of the 13th
 day of May, 1887, I have well, faithfully,
 and truly, in ~~my~~ own proper person, and in strict conformity with the
 instructions furnished by the U. S. Surveyor General for Oregon, the
 Surveying Manual, and the laws of the United States, surveying all
 those parts or portions of Reservation Boundary

Willamette Meridian, in the State of Oregon, as are represented in the
 foregoing field notes as having been surveyed by me and under my
 directions; and I do further solemnly swear that all the corners of said
 survey have been established and perpetuated in strict accordance with
 the Surveying Manual, printed instructions, the special written instruc-
 tions of the U. S. Surveyor General for Oregon, and in the specific man-
 ner described in the field notes, and that the foregoing are the *true* field
 notes of such survey, and should any fraud be detected I will suffer the
 penalty of perjury under the provisions of an act of Congress approved
 August 8, 1846.

James P. Curran, & James E. Poland
 U. S. Deputy Surveyor.

Subscribed and sworn to before me this Fifteenth
 day of February, 1888

Alex Woodcock
 Notary Public
 for Oregon

Office of U. S. Surveyor General,

Portland, Oregon, Sept 20th, 1888

The ~~following~~ ^{foregoing} Field Notes of the Survey of ~~the~~
 a portion of Boundary line
 of the Umatilla Indian
 Reservation in Oregon
 executed by James P. Currier and James E. Nola
 Special Joint U. S. Dept Surveyors.
 under ~~his~~ Contract No., dated May
 4th, 1887, having been critically examined,
 the necessary corrections and explanations made, the
 said Field Notes and the survey they describe, are
 hereby approved.

Douglas W. Taylor -

Surveyor General.