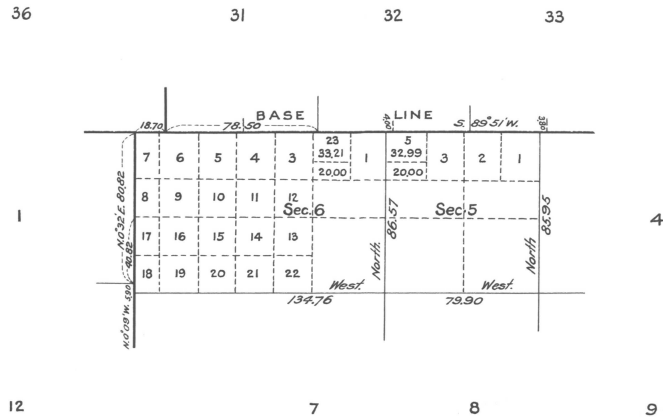


*Supplemental Plat  
of  
Sections 5 and 6 - Township No 1 South, Range No 33 East of the Willamette Meridian, Oregon.  
(Superseding plat of said sections approved June 14, 1890)  
Scale 40 chains to an inch*



*This Supplemental Plat showing the areas and legal designation of the subdivision of old Lot A, embracing the NW¼NW¼ of section 5, and old Lot 2 embracing the NW¼NE¼ section 6, T.1 S., R.33 E. of the Willamette Meridian, Oregon, is made for the purpose of accommodating an Indian Allotment on the Umatilla Reservation, prepared in compliance with instructions from the Hon. Asst. Commissioner of the General Land Office, contained in Letter 'E' dated January 16, 1919.*

*U.S. Surveyor General's Office  
Portland, Oregon, February 4, 1919*

*Edward J. W. [Signature]  
Surveyor General of Oregon.*

ACCEPTED BY THE HON. COMMISSIONER G. L. O. February 10, 1919