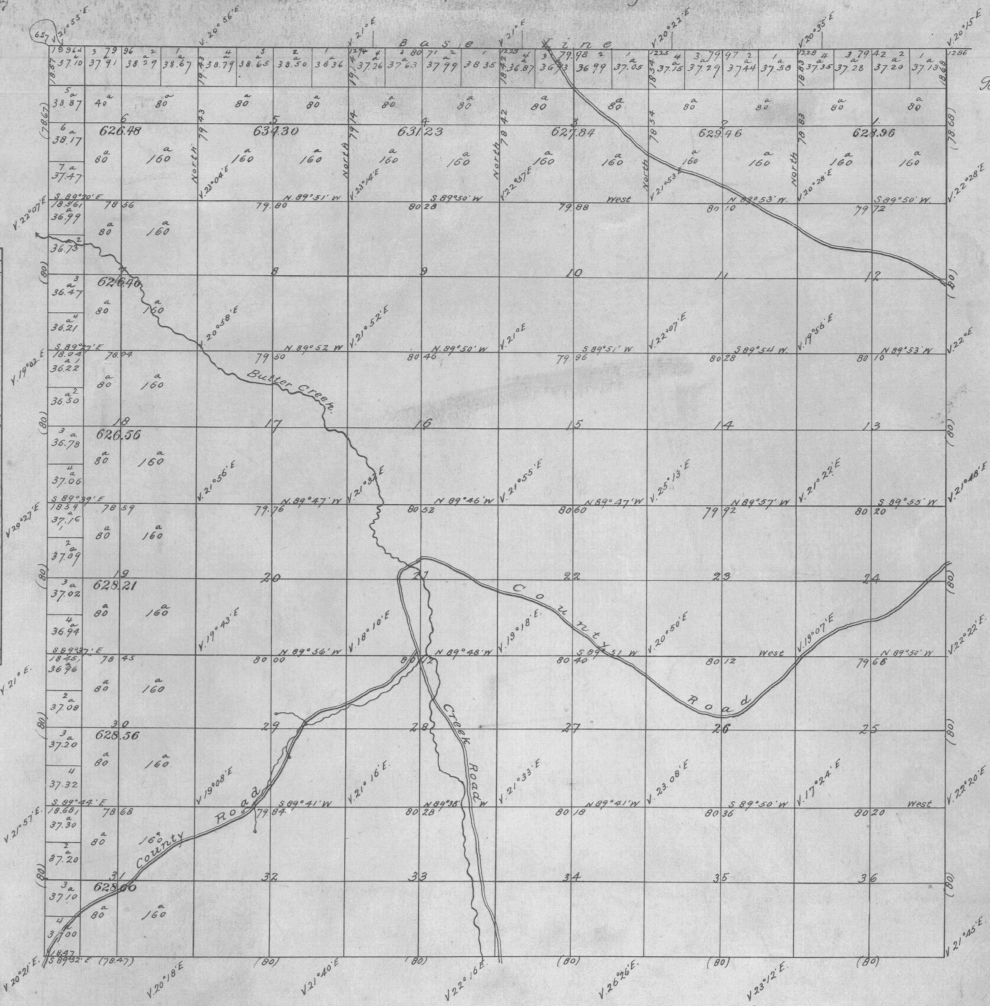


Township 1 South Range 30 East.

Rec'd with 84, date of April 6, 1872.

Sec (cont)	Acres
1	628.94
2	629.46
3	629.94
4	631.53
5	633.3
6	635.14
7	636.26
8	640.00
9	640.00
10	640.00
11	640.00
12	640.00
13	640.00
14	640.00
15	640.00
16	640.00
17	640.00
18	626.56
19	628.21
20	640.00
21	370.00
22	640.00
23	640.00
24	640.00
25	640.00
26	640.00
27	640.00
28	640.00
29	640.00
30	628.56
31	628.80
32	640.00
33	640.00
34	640.00
35	640.00
36	640.00
Total	22,916.60

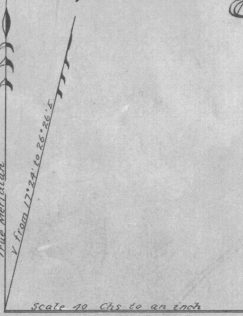


General Description
 The land in this Township is principally 2^d rate and produces excellent bunch grass and is valuable for grazing purposes a small part along the Creek is 1st rate and good for farming. A few Cottonwood trees and a thick growth of willow and Alder brush along the Creek is the only timber. Butler Creek running through the western part and a number of springs in the other parts of the Township afford water for stock.

DEPARTMENT OF THE INTERIOR,
 GENERAL LAND OFFICE.

Washington June 30 1872
 This plat of 1. South Range 30 East
Oregon is a true copy of the official
 thereof.

D. H. Tomlinson
 Commissioner



Lines	Contractors	Contract		Acre Surveyed		Commenced	Completed
		No	Date	MIS.	Chs. Lks.		
Subdivisions Intersection on Base Line	Williams & Pershin	154	June 6 th 1871	58	69 92	Oct 26 th 1871	Nov. 7 th 1871
					49 70		
		Total			60	39 62	

The above Map of the subdivisional lines of T. 1 S. R. 30 E. Will. Mer. Oregon is strictly conformable to the original field notes of the survey thereof on file in this Office which have been examined and approved U.S. Surveyor Generals Office Eugene City April 4th 1872
W. H. Adell
 Sur. Genl Oregon