

FIELD NOTES

Of the survey of the Reservation Boundary

Lines of

Willamette Meridian, Oregon,

as surveyed by James P. Carrin and James Edoland

their special

U. S. Deputy Surveyor, under his Contract No. _____

dated May 4th, 1887

Survey commenced, June 15th, 1887

Survey completed, November 5th, 1887

NAMES AND DUTIES OF ASSISTANTS.

_____, Compassman.
J. M. Henry, Chainman.
J. S. Medley, Chainman.
W. H. Medley, Chainman.
Frank Belshaw, Chainman.
R. Rush, Axman.
A. Keatch, Axman.
 _____, Flagman.

PRELIMINARY OATHS OF ASSISTANTS.

We, *W. Henry, J. S. Medley, W. H. Medley and Frank Belshaw*

do solemnly swear that we will faithfully execute the duties of Chain Carriers; that we will level the chain over even and uneven ground, and plumb the tally pins, either by sticking or dropping the same; that we will report the true distance to all notable objects, and the true length of all lines that we will assist in measuring, to the best of our skill and ability, and in accordance with the instructions given us in the survey

of the *Reservation Boundary*

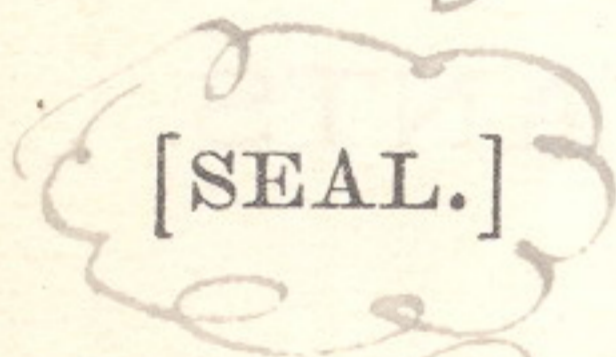
lines of

Willamette Meridian, Oregon.

J. W. Henry, Chainman.
J. S. Medley, Chainman.
W. H. Medley, Chainman.
Frank Belshaw, Chainman.

Subscribed and sworn to before me this *15th*

day of *June*, 188*7*



James E. Noland
U. S. Dept. Surveyor

We, *R. Rush* and *H. Neatch*

do solemnly swear that we will well and truly perform the duties of Axmen in the establishment of corners and other duties, according to instructions given us, and to the best of our skill and ability, in the survey of the

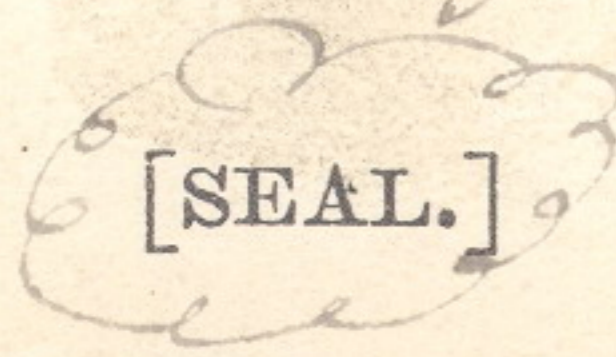
Reservation Boundary

Willamette Meridian, Oregon.

R. Rush, Axman.
H. Neatch, Axman.

Subscribed and sworn to before me this *Fifteenth*

day of *June*, 188*7*



James E. Noland
U. S. Dept. Surveyor

R 32 E

R 33 E

T 4 N. R 34 E

R 35 E

R 36 E

63

T 3 N.

T 2 N.

T 1 N.

BASE LINE

T 1 S

T 2 S

62

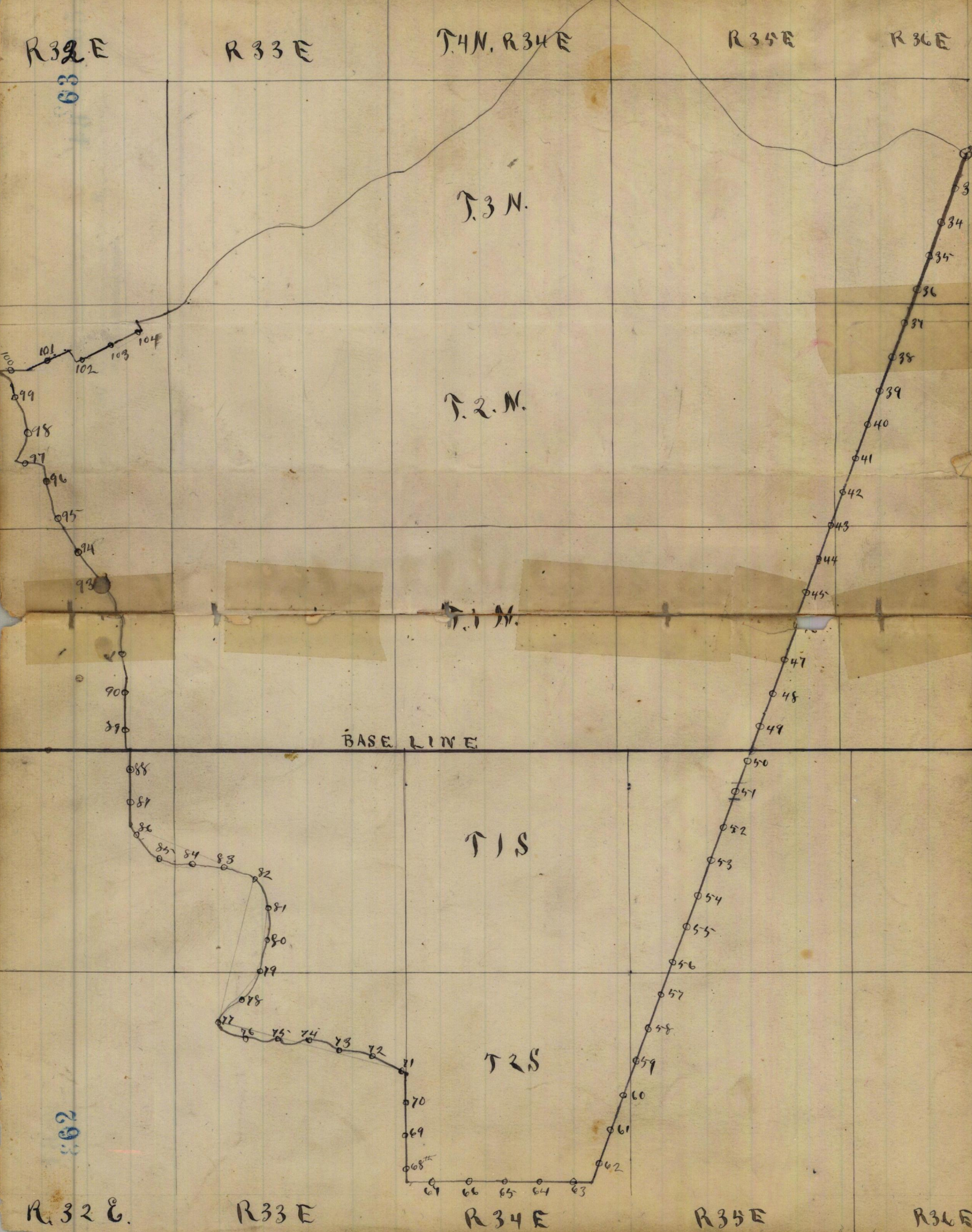
R 32 E.

R 33 E

R 34 E

R 35 E

R 36 E



Reservation Boundary

of T. R.

Willamette Meridian, Oregon.

chs. (8093-10 M.)

Thence S 20° W on 43rd Mile
Var. 18° 40' E

350	Gulch Course E	-200
1800	Ridge " "	+600
2750	Gulch " "	-300
3600	Ridge " "	+300
4000	Set a basalt-stone 12x12x12 ins 8 ins in the ground for 1/2 mile stone marked 1/2 M. on N & U. R. on W faces. raised a stone mound around it.	
4575	Gulch Course E	-300
5500	Ridge " "	+250
6200	Gulch " "	-250

5000 Set a post- 48x4x4 ins 24 ins in
the ground for 43rd Mile post-
Marked 43 M. on N & U. R. on W
faces. From which a pine 10 ins
in diam to N 20° E dist- 180 lbs
Mkd. 43 M. U. R. B. raised a mound
of stone around it.
Land mountainous 80. ds. Soil 4th rate
Bunch grass *

*I test my compass by a
observation in Polaris
and find it to be
correct.

13

Reservation Boundary 83

of T. ----- R.

Willamette Meridian, Oregon.

cks

41-

Thence S 20° 27' W. on 44th Mile
Var 16° 15' E

150 Table land + 150

31.00 descend

40.00 Set a post - 48 x 4 x 4 ins 24 ins in the
Ground for 1/2 mile post - W. 1/2 M.
on N + N. R. on N. faces, raised a
stone mound around it - - 150

56.00 Table land + 150

73.00 I found & destroyed old 44th Mile
post - 2 lbs E. of my line - Descend

80.00 To a small stone ^{in place} 48 x 36 x 20 ins ab-
ove ground which I marked 44
M on N + N. R. on N. with a + on
at exact corner point
top for 44th Mile stone - - 300

Raised a stone mound along side
Land Mains - 80 cks.

Soil 2nd + 3rd gate

Good bunch Grass -

No timber

84 Reservation Boundary

of T. ----- R. -----

Willamette Meridian, Oregon.

chs

(8093 - 10 M.)

Fence S of 0th W on 45th Mile
Var 17° E

- 4.00 Brook 5 chs. course W -100
- 22.00 Summit +300
- 40.00 Set a Gas all-stone 14x10x8 ins 8 ins in the ground for 1/2 Mile cor. Marked 1/2 M on N + U. R. on W. Faces. Raised a stone mound around -200
- 72.10 Found & destroyed old 45th Mile post and stone mnd - Summit of ridge +600
- 80.00 Set a Gas all-stone 10x10x10 ins ^{7 ins in the ground} for 45th Mile stone Marked 45th M on N + U. R. on W. Faces. raised a stone mound around it

Land Main tain are 80 chs
Soil rocky 4th Rate
Fir & Tamarack timber on N
hillsides & Good bunch Grass

June 17 - 1887

15

Reservation Boundary

85

of T. R.

Willamette Meridian, Oregon.

chs

91-

Thence S 20° W on 46th Mile
Var 21° E

1820 Brook 10 lks wide course N. W - 1000

4000 Set a post 48 x 4 x 4 ins 24 ins in
the ground for 1/2 mile post-marked
1/2 M. on S + N. R. on W faces

From which a fir 8 ins in diam to
S 25° W dist. 23 lks. Marked 1/2 M. N. R. S.
No other tree in limits.

Raised stone mound around it - +800

4600 Top of ridge course W +200

8000 Set a basalt-stone 12 x 10 x 10 ins 8 ins
in the ground for 46th Mile stone

Marked 46 M on S + N. R on W faces

Raised a stone mound along side

Land maintains 80 chs

Soil 3rd rate

Scattering pine fir + Fernoack

Timber in Canaan

Good bunch grass

86 Reservation Boundary

of T.

R.

Willamette Meridian, Oregon.

chs.

(8093-10 M.)

Thence S 20° W on 47th Mile
Var 19° E

4.10	Gulch Course W	-100
30.00	" " "	-100
30.00	Ridge " "	+100
40.00	Set a Gas all-stone 18x16x10 ins 1/2 ins in the ground for 1/2 mile stone Marked 1/2 M. on N + U. R. on W faces x Raised a stone mound around it	
54.25	Cannon + Creek 10 Mts. Course W	-500
70.00	Ridge " "	+400
76.25	Gulch " N.W.	-100
80.00	Set a post-48x4x4 ins 24 ins in the ground for 47 th Mile post- Marked 47 M. on N + U. R. on W faces, from which a fir 10 ins in diam to S 55° W dist 25 Mts. Marked 47 M. U. R. B. D. Raised stone mound around it Land Maintenance 80. chgs Soil rocky 4 th rate Good Grass	

Reservation Boundary

of T. R.
Willamette Meridian, Oregon.

chs.

41-

Up to this point - I found by
Plays & Cows made by Dept.
Moody that - I was on his line
But on running S 20° W from
this point - at 80.00 chs. I was
3.15 chs. W of his line which is
plainly marked on this mile
I therefore run this mile over
following his line on the course
S 17° 45' W on 45th Mile
Var. 19° 45' E

- 6.00 Summit + 50
- 33.75 Brook 10 lks. wide course W - 200
- 40.00 Set a post 48 x 4 x 4 ins 24 ins in the
ground for 1/2 mile post - marked 1/2
M. on St. & U.R. on W faces, from
which a fir 24 ins. to East -
dist. 16 lks marked 1/2 M. U.R.
B.T. Raised a stone mound
around post
- 50.00 Summit + 200

88 Reservation Boundary

of T. _____ R. _____

Willamette Meridian, Oregon.

Chs. (8093-10 M.)

8000

See - a post - 48 x 4 x 4 ins 24
 ins in the ground for 4 8th
 Mile post - marked 4 8th Man
 N + N. Run 90 faces, from
 which a fir 12 ins in diam
 to N 80° E dist - 20 lks. Mar-
 ked 4 8th M. U. R. B. D. A pine 4 in
 in diam to S. 80° W, dist - 12 lks.
 Marked 4 8th M. U. R. B. D.

Land Maintains 80. ch
 Soil 2nd rate

Pine fir + Tamarack timber
 with underbrush of some.
 Scattering at first - grow-
 ing gradually thicker
 Grass Poor.

June 15 - 1857

Reservation Boundary 19
89

of T. R.

Willamette Meridian, Oregon.

Ch

41-

South 20th an 49th Mile
Var 20th

400 Spring Branch 1^{1/2} mile wide course W

4000 Set a post-48x4x4 ins 24 ins

in the ground for 1/2 mile

post-marked 1/2 Mile N &

U. R. on W faces, raised a

mound of stone around it-

5000 Set a post-48x4x4 ins 24 ins

in the ground for 49th Mile

post-marked 49. Mile N &

U. R. on W. faces. From which

a Black Pine 8 ins in diam to

N 60th dist-25 lks. Marked

49 M. U. R. B. T. a pine

4 ins. in diam to, N 45th E

dist-16 lks. Marked 49.

M. U. R. B. T.

No other trees in limits-

Raised a mound of stone

around post- Pile impracticable

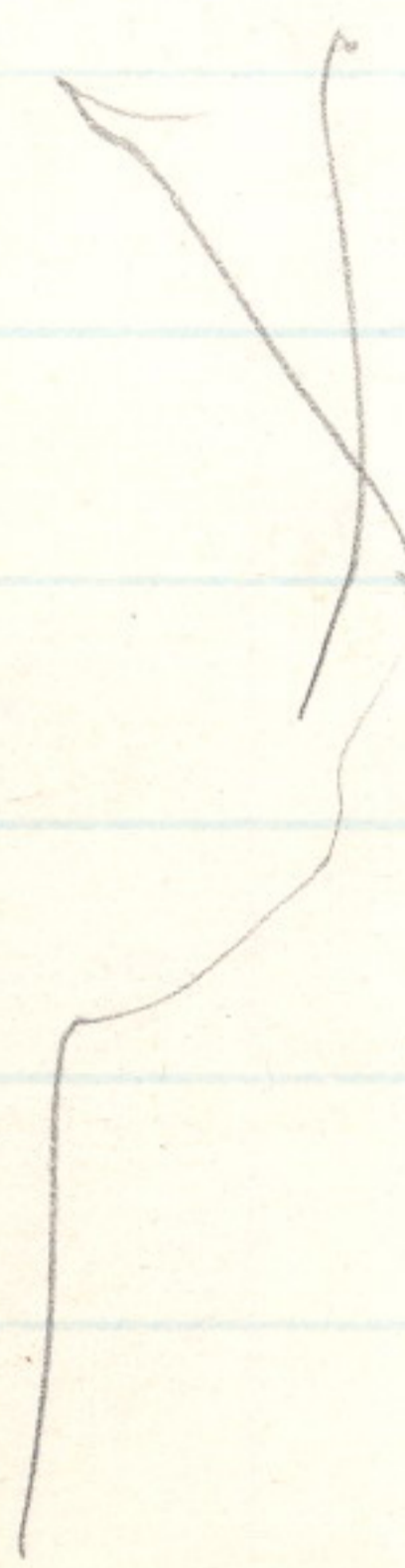
20

90 Reservation Boundary

of T. R.

Willamette Meridian, Oregon.

cho (8093-10 M.)



Land rolling
 Soil light - 2nd rate
 Pine, Fir, Tamarack & Spruce
 Timber under brush of
 The same x 70. chz dense
 Frequent - small openings
 Poor grass, in timber
 Good bunch grass in
 openings

Reservation Boundary 18
91

of T. R.

Willamette Meridian, Oregon.

South 20° N on 50th Mile

Var. $20^{\circ} 15' E$

40.00

Set a Bossalt stone $16 \times 16 \times 10$ ins 9 ins
in the ground for $\frac{1}{2}$ mile stone mkd.
 $\frac{1}{2}$ M on S + N. Run W faces from which
A pine 16 ins in diam. to S 60° N dist
18 lks A pine 8 ins. to S 80° E dist - 12 lks
Each marked $\frac{1}{2}$ M. N. R. B.S.

46.50

Spuch Course E

- 30

80.00

Set a Bossalt stone $20 \times 14 \times 6$ ins 15
ins in the ground for 50th Mile
stone mkd. 50 M on S + N. Run W faces
From which a Black pine 8 ins in diam.
to S 80° N dist 40 lks. A Black pine
8 ins in diam to S 20° N dist - 30 lks
Each marked 50 M. N. R. B.S.

Land rolling

Sail good rate,

Black pine much of it fallen
with ^{dense} under brush of same 80. chs

No grass

June 18 - 1887

19 Reservation Boundary

92

of T. R.
Willamette Meridian, Oregon.

(8093-10 M.)

South 20° 7' on 5 1/2^{mi} Mill
Var 19° 15' E

11.50 Intersect Base line 3.00 E of 1/4 sec cor
and S bdy of sec. 34 T. 1 N R. 35 E. Will-
amette meridian *

13.75 Old Emigrant road N.W.

18.50 creek 10 lks. wide course E

40.00 Set a post 48x4x4 ins 24 ins in the ground
for 1/2 mi post mkd 1/2 W and face + U.R.
an W face from which a Black pine 12 ins
to S 30° W dist 13 lks a Black pine 8 ins
in diam. to S 40° E dist 16 lks. each
marked 1/2 M. N. R. B.P.

51.25 Pendleton + La. Grande road S.W.

61.50 old wood road

67.78 found old 5 1/2^{mi} post which I destroy

80.00 Set a post 48x4x4 ins 24 ins in
The ground for 5 1/2^{mi} post
Marked 5 1/2^{mi} on S + U. R. on W
faces from which a Black pine
8 ins in diam to S 40° W dist 5 lks

and marked a black pine 92A

6 ins. in diameter U. R. C. C on west

face for closing corner

from which

a black Pine 10 ins in diameter

bears N. 30° W. 9 lbs. dist. marked
with C. G. B. J.

a Black Pine 12 ins in diam.

bears S 55° W. 25 links dist marked

U. R. A. C. B. T.



FINAL OATHS FOR SURVEYS.

162 A list of the names of the individuals employed by James P. Currier and James E. Roland, U. S. Deputy Surveyor, to assist in running, measuring, and marking the lines and corners described in the foregoing field notes of the survey of the Reservation Boundary lines of

Willamette Meridian, Oregon, showing the respective capacities in which they acted:

- J. W. Henry, Compassman.
J. S. Medley, Chainman.
W. H. Medley, Chainman.
Frank Belshaw, Chainman.
B. Rush, Axman.
H. Veatch, Axman.
Flagman.

FINAL OATHS OF ASSISTANTS.

We hereby certify that we assisted James P. Currier and James E. Roland, U. S. Deputy Surveyor, in surveying all those parts or portions of the Reservation Boundary of

Willamette Meridian, Oregon, as represented in the foregoing field notes as having been surveyed by him and under his direction; and that said survey has been in all respects, to the best of our knowledge and belief, well and faithfully surveyed, and the corner monuments established, according to the instructions furnished by the U. S. Surveyor General of Oregon.

- J. W. Henry, Compassman.
J. S. Medley, Chainman.
W. H. Medley, Chainman.
Frank Belshaw, Chainman.
B. Rush, Axman.
H. Veatch, Axman.
Flagman.

Subscribed and sworn to before me this Fifth day of November, 1887.

[SEAL.]

James E. Roland U. S. Deputy Surveyor

FINAL OATH OF DEPUTY SURVEYOR.

We James P. Curran and James E. Poland, United States
 Deputy Surveyor, do solemnly swear that in pursuance of instructions
 received from Douglas H. Taylor, U. S.
 Surveyor General for Oregon, bearing date of the 13th
 day of May, 1887, I have well, faithfully,
 and truly, in ~~my~~ own proper person, and in strict conformity with the
 instructions furnished by the U. S. Surveyor General for Oregon, the
 Surveying Manual, and the laws of the United States, surveying all
 those parts or portions of Reservation Boundary

Willamette Meridian, in the State of Oregon, as are represented in the
 foregoing field notes as having been surveyed by me and under my
 directions; and I do further solemnly swear that all the corners of said
 survey have been established and perpetuated in strict accordance with
 the Surveying Manual, printed instructions, the special written instruc-
 tions of the U. S. Surveyor General for Oregon, and in the specific man-
 ner described in the field notes, and that the foregoing are the *true* field
 notes of such survey, and should any fraud be detected I will suffer the
 penalty of perjury under the provisions of an act of Congress approved
 August 8, 1846.

James P. Curran, & James E. Poland
 U. S. Deputy Surveyor.

Subscribed and sworn to before me this Fifteenth
 day of February, 1888

Alex Woodcock
 Notary Public
 for Oregon

Office of U. S. Surveyor General,

Portland, Oregon, Sept 20th, 1888

The ~~following~~ ^{foregoing} Field Notes of the Survey of ~~the~~
 a portion of Boundary line
 of the Umatilla Indian
 Reservation in Oregon
 executed by James P. Currier and James E. Nola
 Special Joint U. S. Dept Surveyors.
 under ~~his~~ Contract No., dated May
 4th, 1887, having been critically examined,
 the necessary corrections and explanations made, the
 said Field Notes and the survey they describe, are
 hereby approved.

Douglas W. Taylor -

Surveyor General.