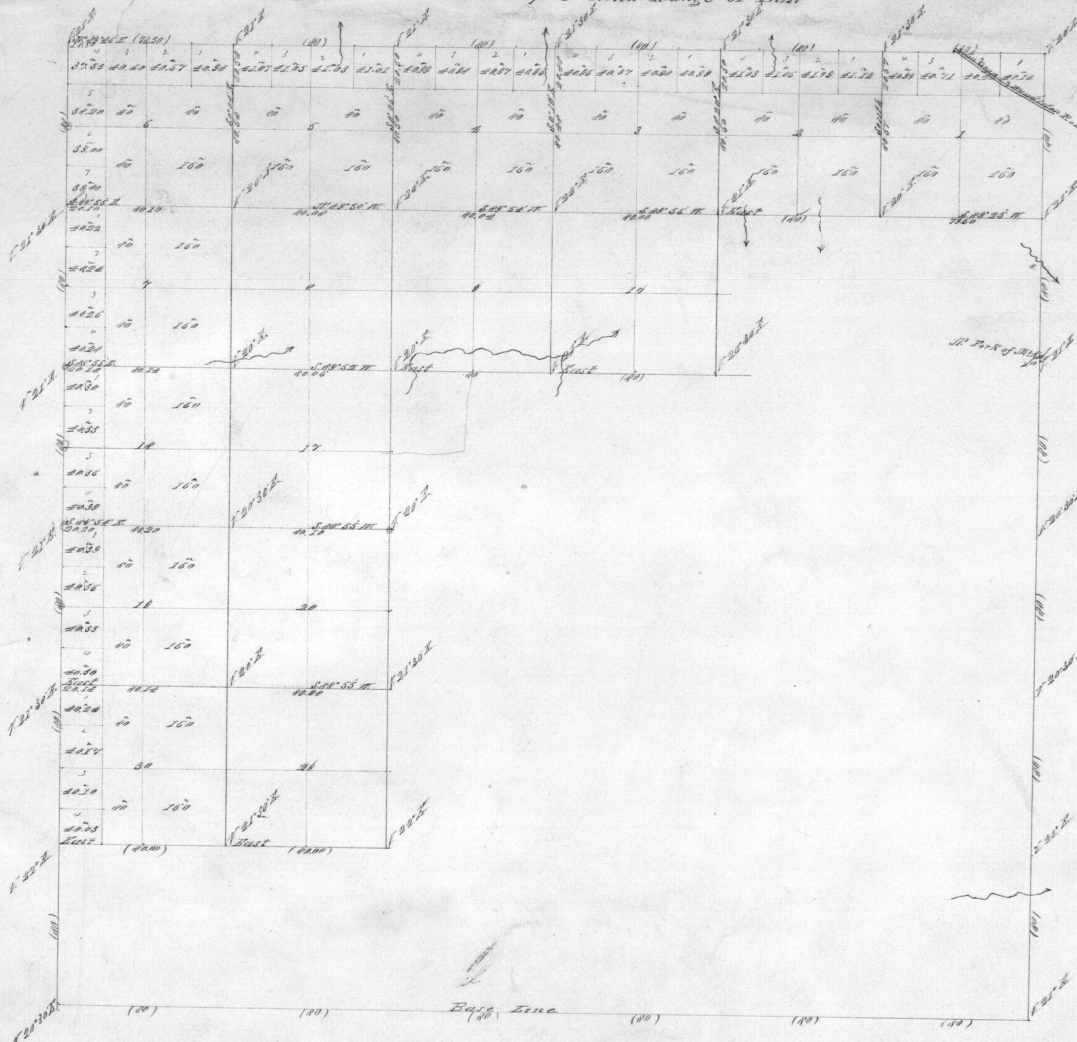
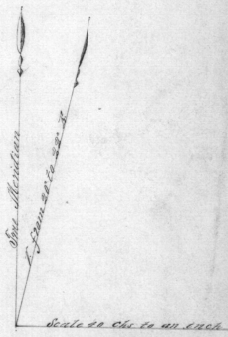


Township 1 North Range 2 West

Section	Acres
1	64.0000
2	64.0000
3	64.0000
4	64.0000
5	64.0000
6	64.0000
7	64.0000
8	64.0000
9	64.0000
10	64.0000
11	64.0000
12	64.0000
13	64.0000
14	64.0000
15	64.0000
16	64.0000
17	64.0000
18	64.0000
19	64.0000
20	64.0000
<b>Total</b>	<b>1280.0000</b>



General Description  
 The land in this township  
 is hilly soil 2<sup>nd</sup> rate good  
 grade



Line	Contractors	Contract No.	Contract Date	First Surveyed	Final Surveyed	Commenced	Completed
Subdivisions	G. & Sherry	225	April 25 1890	St. 03	25		

We also check of the subdivision lines of T. 1 N. R. 2 W. N. 1/4 Sec. 10, 11, 12, 13, 14, 15, 16, 17, 18, 19, 20. Will also check of the original field notes of the survey there on file in this office which have been examined and approved.  
 A. S. Garrison General Office  
 Eugene July 11 1891

W. H. Odell  
 Gen. Supt. Oregon