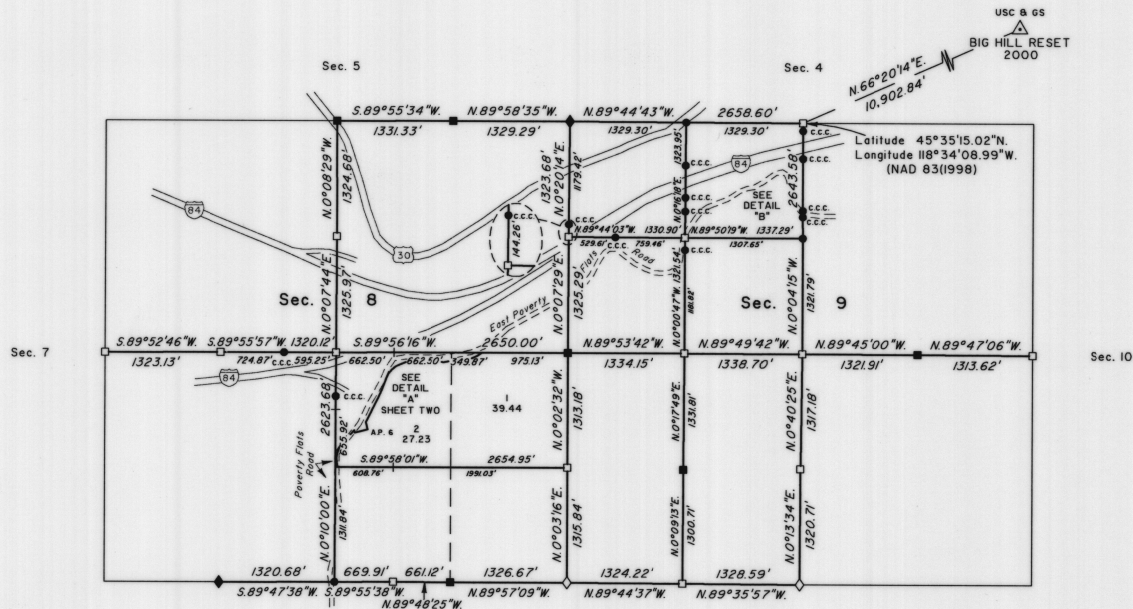


# TOWNSHIP 1 NORTH, RANGE 34 EAST, OF THE WILLAMETTE MERIDIAN, OREGON

SHEET 1 OF 2

## DEPENDENT RESURVEY, SUBDIVISION OF SECTIONS 8 AND 9 AND SURVEY



A history of surveys is contained in the field notes.

This plat represents a dependent resurvey of a portion of the subdivision lines and subdivision-of-section lines of section 8, T. 1 N., R. 34 E., Willamette Meridian, Oregon, designed to restore the corners in their true original locations according to the best available evidence, and the subdivision of sections 8 and 9 and a metes-and-bounds survey in section 8.

Measured distances and directions have been adjusted by Cadastral Measurement Management for Windows (WinCMM), computer software that incorporates a least squares adjustment routine. The adjusted bearings and distances are reported to the nearest second and 0.01 foot.

Except as shown hereon, the lottings and areas are as shown on the plat approved November 11, 1871 and June 14, 1890.

The survey was executed by Bryan S. Seibold, Cadastral Surveyor, beginning April 15, 2002, and completed May 28, 2002, pursuant to Special Instructions dated April 4, 2002, under Group Number 1969, Oregon.

Timber in this area consists of fir and pine.

The tie to the geodetic control station is reported as mean bearing and sea level distance.

### LEGEND

- ◇ Original corner previously remonumented
- ◆ Original corner remonumented this survey
- Corner previously restored, established or reestablished
- Corner previously restored, established or reestablished; remonumented this survey
- Corner established or reestablished this survey

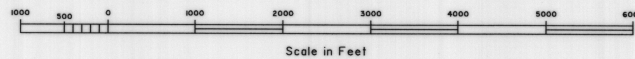
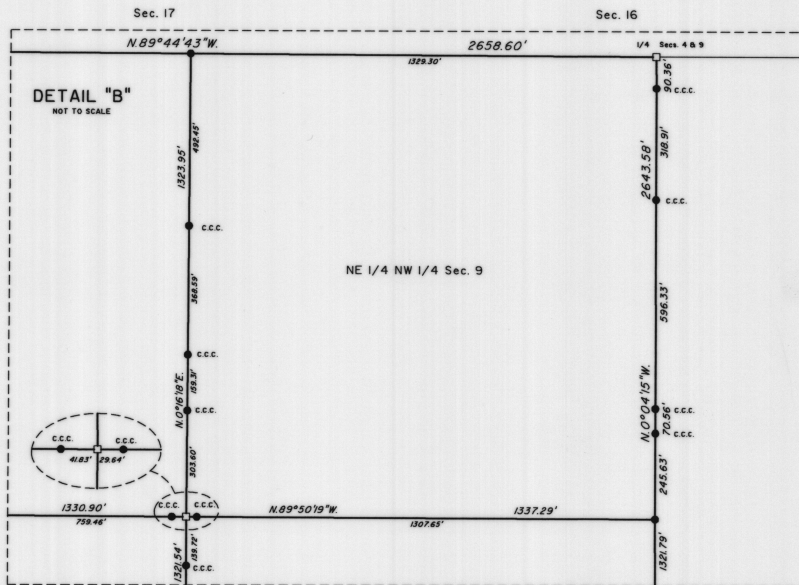
UNITED STATES DEPARTMENT OF THE INTERIOR  
BUREAU OF LAND MANAGEMENT

Portland, Oregon June 24, 2004

This plat is strictly conformable to the approved field notes, and the survey, having been correctly executed in accordance with the requirements of law and the regulations of this Bureau, is hereby accepted.

For the Director

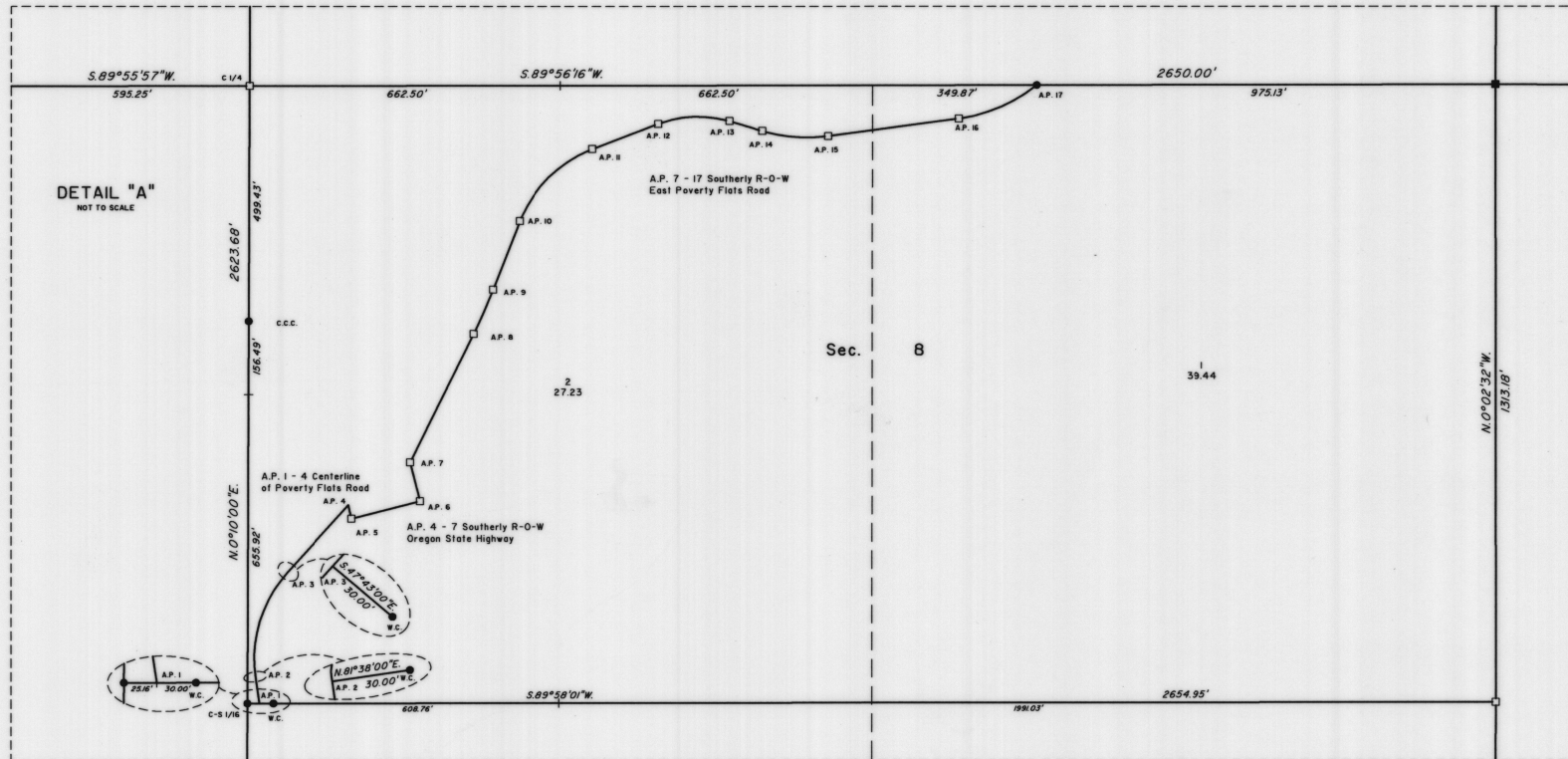
Chief Cadastral Surveyor of Oregon



TOWNSHIP 1 NORTH, RANGE 34 EAST, OF THE WILLAMETTE MERIDIAN, OREGON

SHEET 2 OF 2

DEPENDENT RESURVEY, SUBDIVISION OF SECTIONS 8 AND 9 AND SURVEY



DETAIL "A"  
NOT TO SCALE

BEARING & DISTANCE TABLE  
Metes-and-Bounds survey in N 1/2 SE 1/4 Sec. 8

A.P. 1	N.8°22'00"W.	55.21'
A.P. 2	Δ = 50°39'00" R = 274.71' L = 242.84'	
A.P. 3	N.42°17'00"E.	192.44'
A.P. 4	S.14°09'27"E.	30.00'
A.P. 5	N.75°50'58"E.	149.88'
A.P. 6	N.14°09'14"W.	85.46'
A.P. 7	N.26°14'54"E.	304.36'
A.P. 8	Δ = 4°54'00" R = 1195.92' L = 102.33'	
A.P. 9	N.2°27'46"E.	156.43'
A.P. 10	Δ = 47°50'00" R = 268.32' L = 224.07'	
A.P. 11	N.69°08'26"E.	149.94'
A.P. 12	Δ = 37°16'00" R = 236.49' L = 153.77'	
A.P. 13	S.73°39'33"E.	74.45'
A.P. 14	Δ = 23°59'00" R = 336.48' L = 140.91'	
A.P. 15	N.82°22'24"E.	278.33'
A.P. 16	Δ = 3°13'36" R = 336.48' L = 183.38'	
A.P. 17		

**LEGEND**

- Corner previously restored, established or reestablished
- Corner previously restored, established or reestablished; remonumented this survey
- Corner established or reestablished this survey



UNITED STATES DEPARTMENT OF THE INTERIOR  
BUREAU OF LAND MANAGEMENT

Portland, Oregon June 24, 2004

This plat is strictly conformable to the approved field notes, and the survey, having been correctly executed in accordance with the requirements of law and the regulations of this Bureau, is hereby accepted.

For the Director  
*Mary J. M. Houtel*  
Chief Cadastral Surveyor of Oregon