

FIELD NOTES

Of the survey of the Reservation Boundary

Lines of

Willamette Meridian, Oregon,

as surveyed by James P. Carrin and James Edoland

their special
U. S. Deputy Surveyor, under his Contract No. _____

dated May 4th, 1887

Survey commenced, June 15th, 1887

Survey completed, November 5th, 1887

NAMES AND DUTIES OF ASSISTANTS.

_____, Compassman.
J. M. Henry, Chainman.
J. S. Medley, Chainman.
W. H. Medley, Chainman.
Frank Belshaw, Chainman.
R. Rush, Axman.
A. Keatch, Axman.
 _____, Flagman.

PRELIMINARY OATHS OF ASSISTANTS.

We, *W. Henry, J. S. Medley, W. H. Medley and Frank Belshaw*

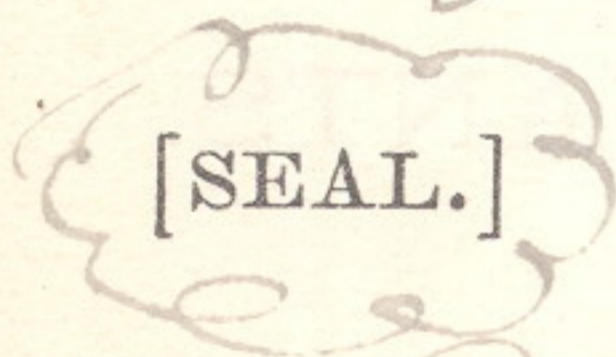
do solemnly swear that we will faithfully execute the duties of Chain Carriers; that we will level the chain over even and uneven ground, and plumb the tally pins, either by sticking or dropping the same; that we will report the true distance to all notable objects, and the true length of all lines that we will assist in measuring, to the best of our skill and ability, and in accordance with the instructions given us in the survey

of the *Reservation Boundary* lines of

Willamette Meridian, Oregon.

J. W. Henry, Chainman.
J. S. Medley, Chainman.
W. H. Medley, Chainman.
Frank Belshaw, Chainman.

Subscribed and sworn to before me this *15th* day of *June*, 188*7*



James E. Noland
U. S. Dept. Surveyor

We, *R. Rush* and *H. Neatch*, do solemnly

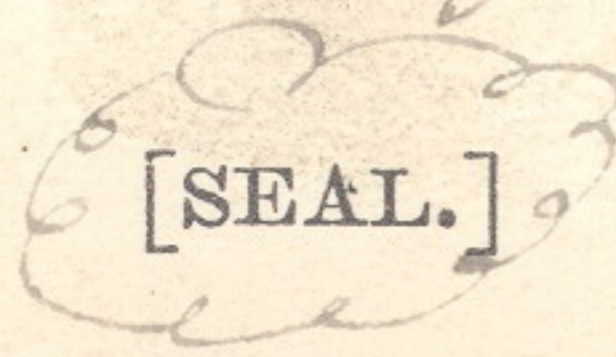
swear that we will well and truly perform the duties of Axmen in the establishment of corners and other duties, according to instructions given us, and to the best of our skill and ability, in the survey of the

Reservation Boundary

Willamette Meridian, Oregon.

R. Rush, Axman.
H. Neatch, Axman.

Subscribed and sworn to before me this *Fifteenth* day of *June*, 188*7*



James E. Noland
U. S. Dept. Surveyor

R 32 E

R 33 E

T 4 N. R 34 E

R 35 E

R 36 E

63

T 3 N.

T 2 N.

T 1 N.

BASE LINE

T 1 S

T 2 S

62

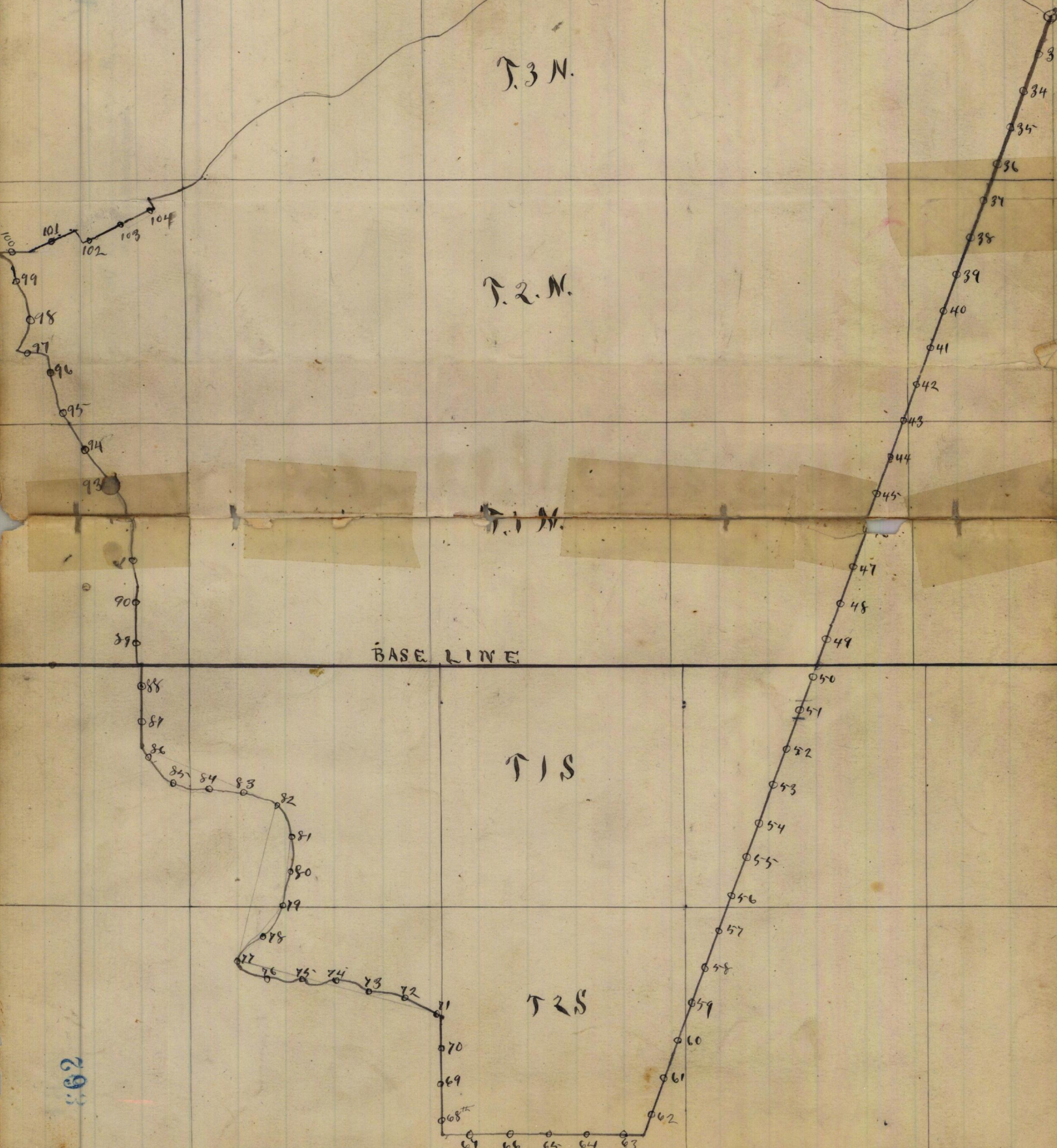
R 32 E.

R 33 E

R 34 E

R 35 E

R 36 E



R 32 E

R 33 E

T 4 N. R 34 E

R 35 E

R 36 E

63

T 3 N.

T 2 N.

T 1 N.

BASE LINE

T 1 S

T 2 S

62

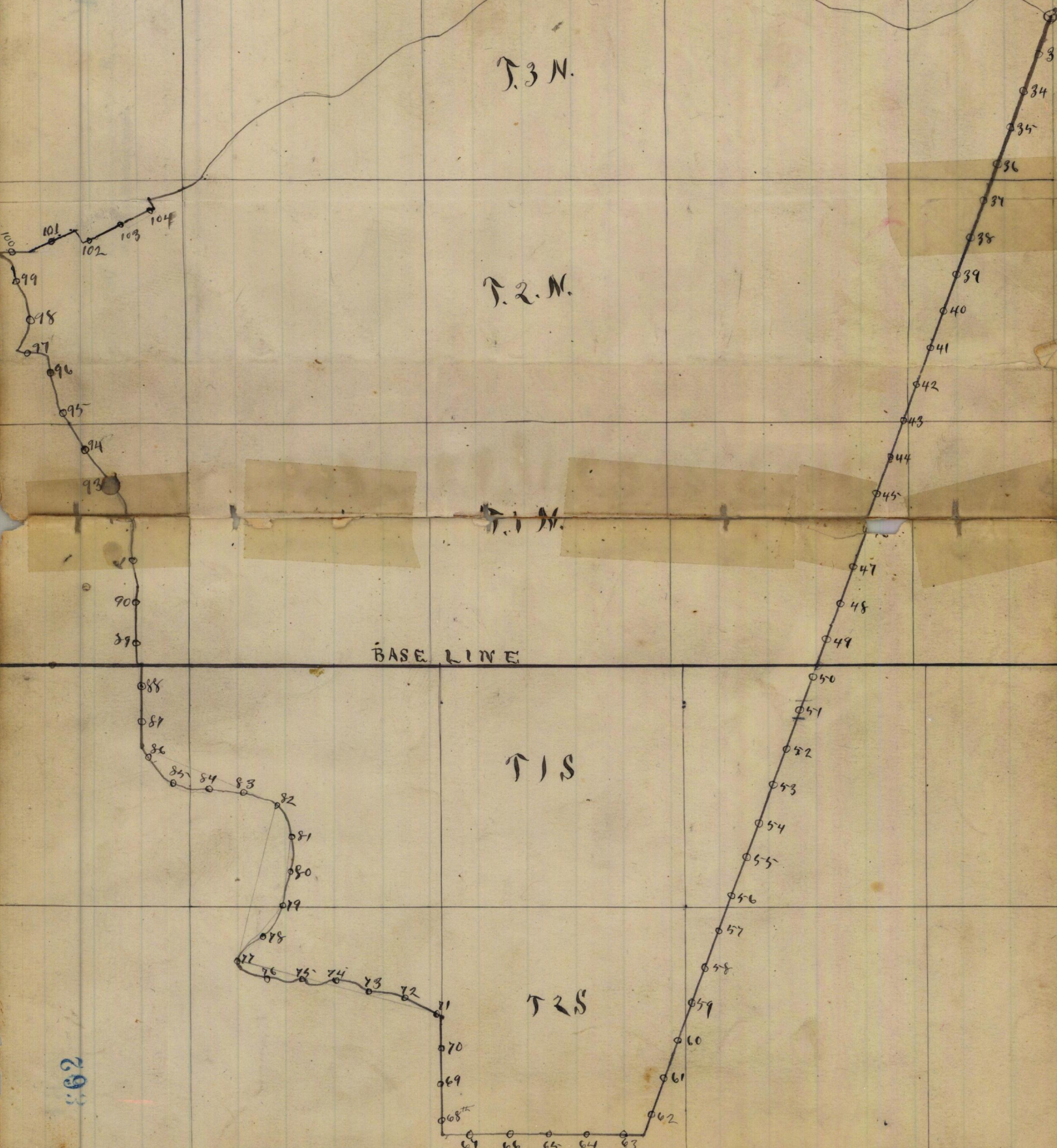
R 32 E.

R 33 E

R 34 E

R 35 E

R 36 E



65
138

Reservation Boundary

of T. _____ R. _____

Willamette Meridian, Oregon.

(8093-10 M.)

The ground for 88th Mile post-
 marked 88 M. on S & N.R. on E.
 18x18x12 ins N.E. S.E. S.W. & N.W. of cor 5 1/2 ft dist
 faces. dug pits and raised earth
 mound 2 ft high 4 1/2 ft base around post
 Land Treaty. Level
 Soil 2nd rate

Thence S. on 89th Mile
 Var 20° E

40.00

Set a post all stone 12x12x10 ins
 8 ins in the ground for 1/2 mile
 Cor. Marked 1/2 M. on S & N.R. on E.
 faces. raised a stone mound around it

62.00

Intersect - Base line at Closing
 Cor. ^{To T 1 S. R. 32 E} 8.00 Cho. W of Cor to Sec. 182 ^{Closing}

I marked this post - 42 for 42nd
 angle Cor. dug pits 18x18x12 ins N. & S. of cor. 5 1/2 ft dist.
 raised earth mound 1 1/2 ft high 3 1/2 ft base around post.
 Thence West all base line

2.63

To Closing Cor. To T 1 N. R. 32 E.

Which I marked 43 for 43rd

angle Cor. & dug pit 18x18x12 ins N. of Cor. 5 1/2 ft dist
 Thence North

Resurvey Boundary 66

of T. R.

139

Willamette Meridian, Oregon.

* I tested my compass on a line previously established in running the Base Line by an observation on Polaris and find it to be correct and in adjustment.

15.07 Set a post - 48 x 4 x 4 ins 12 ins in

The ground for S.P. ^{Corner} 1/2 Mile marked

S.P. M. on S & N. R. on E. Faces. dug pits

n.e. 88, S.W. & n. W. of cor. 5 1/2 ft. dist

of earth 2 ft. high 4 1/2 ft. base around post.

18 x 18 x 12 ins, and raised mound as for Sec. cor.

* Land rolling July 6th 1887

Fence North on 90th Mile
Voss 18th E.

13.00 Enter McKay creek bottom - 20

40.00 Set a base all-stone 10 x 10 x 10 ins

6 ins in the ground for 1/2 Mile cor.

Marked 1/2 M. on S. & N. R. on E. faces.

18 x 18 x 12 ins, on line each side of corner 5 1/2 ft. dist.

dug pits, and raised earth mound as

for 1/4 Sec. Cor. 1 1/2 ft. high. 3 1/2 ft. base around post.

44.83 McKay creek 15 lbs wide Camp N.W.

52.80 " " " " " N.E.

63.77 To Closing Cor. bet. Secs. 26 & 35

80.00 Set a base all-stone 12 x 10 x 10 ins

8 ins in the ground for 90th Mile

Cor. Marked 90 M. on S & N. R.

18 x 18 x 12 ins N.E. S.W. & N.W. of corner 5 1/2 ft. dist

on E. Faces. dug pits, & raised

earth mound 2 ft high 4 1/2 ft base around post

Land rolling No gran.

Reservation Boundary

of T. _____ R. _____

Willamette Meridian, Oregon.

(8093-10 M.)

Hence North on 9th Mile

Var. 20° E

1300

Leave creek bottom, ascend bluff - 30

4000

Set a post - 48 x 4 x 4 ins 12 ins in

The ground for 1/2 Mile post mark

1/2 M. on S. face and N. R. on E face
18 x 18 x 12 ins in line 5 1/2 ft dia from corner
dug pits and raised earth mound

1 1/2 ft high 3 1/2 ft base around post

61.27

McKay Creek Course N.W. 20 lbs

63.00

Closing Cor. bet. secs. 23 + 26.

McKay Creek N -

80.00

Set a basalt stone 10 x 10 x 10 ins

6 ins in The ground for 9th MileCor. Marked. 9th M. on S & N. R.

on E. faces raised stone mound

around it pits & impracticable

Land rolling - Soil in bottom

gravelly & the area are ballance 200

acre, Cattawood & Thornapple

Yallow - Bunch grass and other

Reservation Boundary

of T. R.

Willamette Meridian, Oregon.

Thence North an 9 2nd Mile
Var. 19 1/2° E

450 Set a basalt stone 10x10x10-6 ins
in the ground for 44th Angle
Cor. Marked 44. on S. & N. R. on
E. faces. raised stone mound
around it.

Thence N 10° W

3550 Set a basalt stone 12x10x12 ins
8 ins. in the ground for 1/2 Mile
stone Marked 1/2 M on S. & N. R.
18x18x12 ins in each line 5 1/2 ft dist for cor.
on E. faces + dug pits & raised
earth mound 1 1/2 ft high 3 1/4 ft base
around stone.

5650 Set a basalt stone 10x10x10 ins
6 ins in the ground for 45th
Angle Cor. Marked 45 on S
18x18x12 ins on each line 5 1/2 ft for cor.
& N. R. on E. faces. dug pits & raised
earth mound 1 1/2 ft high 3 1/4 ft
base around stone.

Thence N 15° E

2,87 Closing Cor. to secs. 14 & 23
which I marked 46 for 46th angle cor.

Reservation Boundary

of T. _____ R. _____

Willamette Meridian, Oregon.

(8093-10 M.) Dug pits 18x18x12 ins on each line 5 1/2 ft dirt
 of ~~corn~~ raised mound of earth 1 1/2 ft high
 3 1/2 ft base around corners
 Thence N 10° E

13.13 Set a basalt stone 10x9x8-6 ins in
 the ground for 47th Angle Cor. W/ed.
 18x18x12 ins on each line 5 1/2 ft dirt of cor-
 47th on S & N. R. on E faces. Dug pits &
 raised earth mound 1 1/2 ft high 3 1/2 ft base
 around post
 Thence N 58° W

3.00 Set a basalt stone 16x10x10 ins 10
 ins in the ground for 92nd Mile Cor.
 W/ed 92nd M. on S. N. R. on E faces raised
 stone mound around it -
 Land rolling No grass.
 Thence N 58° W on 93rd Mile
 Var 20° E

40.00 Set a post 4x4x4 ins 12 ins in the
 ground for 1/2 Mile post W/ed
 1/2 M. on E & N. R. on N. E. faces
 18x18x12 ins on each line 5 1/2 ft dirt from ~~corn~~
 Dug pits and raised earth mound
 1 1/2 ft high 3 1/2 ft base around post

50.22 Closing Cor. Set sec. 14 & 15

55.00 Set a post 4x4x4 ins 12 ins in
 the ground for 48th Angle Cor. Mar-
 ked as on S & N. R. on E. faces

Reservation Boundary

70

143

of T. _____ R. _____

Willamette Meridian, Oregon.

18x18x12 ins on each line 5 1/2 ft dist from corner
Dug pits and raised earth mound
1 1/2 ft high 3 1/2 ft base around post
Thence N 22 W

25.00 Set a post 48x4x4 ins 12 ins in
the ground for 93rd Mile Post
Marked 93 M on S + N.R. on E.
18x18x12 ins N.E.S.E. 9 m N.W. of cor 5 1/2 ft dist
faces dug pits and raised earth mound
2 ft high 4 1/2 ft base around post
Land rolling - Soil 2nd rate
Grass very short

Thence N 22 W on 94th Mile
Var 19° 40' E

11.50 Enter field

12.00 Closing cor bet secs 10 & 15

22.00 Set a post 36x3x3 ins 12 ins in the
ground for 49th Angle Cor marked
18x18x12 ins on each line 5 1/2 ft dist
49 on S + N.R. on E faces dug pits
raised earth mound 1 1/2 ft high 3 1/2 ft base
around post
Thence N 18 W

18.00 Set a post 36x4x4 ins 12 ins in

71

Reservation Boundary

144

of T. _____ R. _____

Willamette Meridian, Oregon.

(8093-10 M.)

The ground for $\frac{1}{2}$ Mile post-~~marked~~
 $\frac{1}{2}$ Maus & U. R. on E faces dug
 18x18x12 ins on line $5\frac{1}{2}$ ft dist
 pits and raised earth mound
 $1\frac{1}{2}$ ft high $3\frac{1}{2}$ ft base around post

58.00 Set a post 48x4x4 ins 12 ins in

The ground for 94^{th} Mile cor.
 Marked 94^{th} Maus & U. R. on E
 faces, dug pits, and raised ear-
 18x18x12 ins NE, SE, SW, NW of cor $5\frac{1}{2}$ ft dist
 th mound 2 ft high $4\frac{1}{2}$ ft base
 around post.

Land rolling, Soil 2nd rate

Nov. 31st 1887,

Thence N 87 W on 95^{th} Mile
 Var 20° E

14.72 Closing Cor. bet secs. 3 & 10

which I marked 60 for 50^{th} angle
 Thence N. $5^{\circ} 45' W$.

20.10

Set a post 40x4x4 ins 12 ins in
 The ground for 51^{st} angle
 Cor. Marked 51 on S. & N. Row
 18x18x12 ins on each line $5\frac{1}{2}$ ft. dist
 E faces. dug pits and raised
 $1\frac{1}{2}$ ft. high - $3\frac{1}{2}$ ft. base around post
 Cor. Th mound as for 94^{th} Mile Cor.

Reservation Boundary 72

of T. ----- R. ----- 145
Willamette Meridian, Oregon.

Thence N. 21° 45' W.

5.18 Set a post - 48 x 4 x 4 ins 12 ins in the ground for 1/2 Mile post mark. 1/2 M. and S. R. and E. faces, dug 18 x 18 x 12 ins. on each line 5 1/2 ft. dist. 1 1/2 ft. high 3 1/2 ft. base around post pits raised earth mound as for 1/4 Sec. cor.

21.54 Set a post - 36 x 3 x 3 ins 12 ins in the ground for 52nd Angle Cor. Marked 18 x 18 x 12 ins. on each line 5 1/2 ft. dist. 52 and S & N. R. and E. faces. dug pits 1 1/2 ft. high - 3 1/2 ft. base around post & raised earth mound as for 1/4 Sec. Cor.

Thence N. 13° 15' W.

20.24 Set a post - 36 x 3 x 3 ins 12 ins in the ground for 53rd Angle Cor. Marked 18 x 18 x 12 ins. on each line 5 1/2 ft. dist. 53 and S & N. R. and E. faces. dug pits 1 1/2 ft. high, 3 1/2 ft. base around post & raised earth mound as for 1/4 Sec. cor.

Thence N. 49° W.

3.40 Set a post - 36 x 3 x 3 ins 12 ins in the ground for 95th Mile post - marked 95 18 x 18 x 12 ins N. S. E & W. of cor. 5 1/2 ft. dist. M. and S. & N. R. and E. faces. dug pits 2 ft. high - 4 1/2 ft. base around post & raised earth mound as for 1/4 Sec. cor.

Land rolling - soil 2nd rate
Thence N. 49° W. on the 96th Mile

11.84 Set a post - 48 x 4 x 4 ins 12 ins in the

73 Reservation Boundary

146

of T. R.

Willamette Meridian, Oregon.

(8093-10 M.)

ground for 54th angle corner
Marked $\angle 54$ on S & N. R. on E face
dug pits 18x18x12 ins. on each line 5 1/2 ft. from
corner and raised mound of earth 1 1/2 ft. high, 3 1/2 ft.
base around post.

Thence N. 14° 15' W.

10.84

Closing Cor bet secs. 33 & 34 of
Tps 17 & 2 N. R. 32 E. which I marked
 $\angle 55$ for 55th angle cor.

Thence N 26° W

1330

Closing Cor. bet secs. 33 & 34 T. 2.
N. R. 32 E.

15.00

Set a post 48x4x4 ins 12 ins in
The ground for 1/2 Mile cor.
Marked 1/2 M on S & N. R. on E faces
dug pits & raised with mounds as for 1/4 Sec. cor.
also $\angle 56$ on S. for 56th angle cor.
Thence N 42° 30' W.

26.00

Set a post 36x3x3 ins 12 ins in the
ground for 57th angle cor marked $\angle 57$
on S & N. R. on E faces. dug pits &
18x18x12 ins. on each line 5 1/2 ft. dist

FINAL OATHS FOR SURVEYS.

162 A list of the names of the individuals employed by James P. Currier and James E. Roland, U. S. Deputy Surveyor, to assist in running, measuring, and marking the lines and corners described in the foregoing field notes of the survey of the Reservation Boundary lines of

Willamette Meridian, Oregon, showing the respective capacities in which they acted:

- J. W. Henry, Compassman.
J. S. Medley, Chainman.
W. H. Medley, Chainman.
Frank Belshaw, Chainman.
B. Rush, Axman.
H. Veatch, Axman.
Flagman.

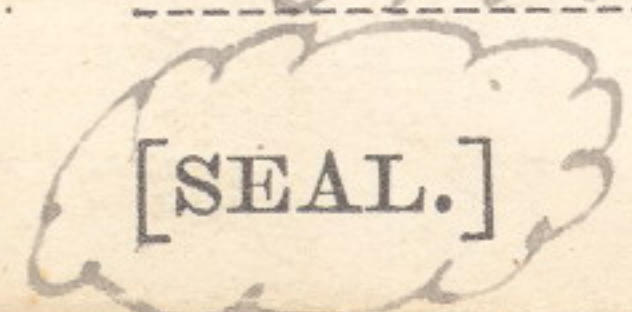
FINAL OATHS OF ASSISTANTS.

We hereby certify that we assisted James P. Currier and James E. Roland, U. S. Deputy Surveyor, in surveying all those parts or portions of the Reservation Boundary of

Willamette Meridian, Oregon, as represented in the foregoing field notes as having been surveyed by him and under his direction; and that said survey has been in all respects, to the best of our knowledge and belief, well and faithfully surveyed, and the corner monuments established, according to the instructions furnished by the U. S. Surveyor General of Oregon.

- J. W. Henry, Compassman.
J. S. Medley, Chainman.
W. H. Medley, Chainman.
Frank Belshaw, Chainman.
B. Rush, Axman.
H. Veatch, Axman.
Flagman.

Subscribed and sworn to before me this Fifth day of November, 1887.



James E. Roland, U. S. Deputy Surveyor

FINAL OATH OF DEPUTY SURVEYOR.

We James P. Curran and James E. Poland, United States
 Deputy Surveyor, do solemnly swear that in pursuance of instructions
 received from Douglas H. Taylor, U. S.
 Surveyor General for Oregon, bearing date of the 13th
 day of May, 1887, I have well, faithfully,
 and truly, in ~~my~~ ^{our} own proper person, and in strict conformity with the
 instructions furnished by the U. S. Surveyor General for Oregon, the
 Surveying Manual, and the laws of the United States, surveying all
 those parts or portions of Reservation Boundary

Willamette Meridian, in the State of Oregon, as are represented in the
 foregoing field notes as having been surveyed by me and under my
 directions; and I do further solemnly swear that all the corners of said
 survey have been established and perpetuated in strict accordance with
 the Surveying Manual, printed instructions, the special written instruc-
 tions of the U. S. Surveyor General for Oregon, and in the specific man-
 ner described in the field notes, and that the foregoing are the *true* field
 notes of such survey, and should any fraud be detected I will suffer the
 penalty of perjury under the provisions of an act of Congress approved
 August 8, 1846.

James P. Curran, & James E. Poland
 U. S. Deputy Surveyor.

Subscribed and sworn to before me this Fifteenth
 day of February, 1888

Alex Woodcock
 Notary Public
 for Oregon

Office of U. S. Surveyor General,

Portland, Oregon, Sept 20th, 1888

The ~~following~~ ^{foregoing} Field Notes of the Survey of ~~the~~
 a portion of Boundary line
 of the Umatilla Indian
 Reservation in Oregon
 executed by James P. Currier and James E. Nola
 Special Joint U. S. Dept Surveyors.
 under ~~his~~ Contract No., dated May
 4th, 1887, having been critically examined,
 the necessary corrections and explanations made, the
 said Field Notes and the survey they describe, are
 hereby approved.

Douglas W. Taylor -

Surveyor General.