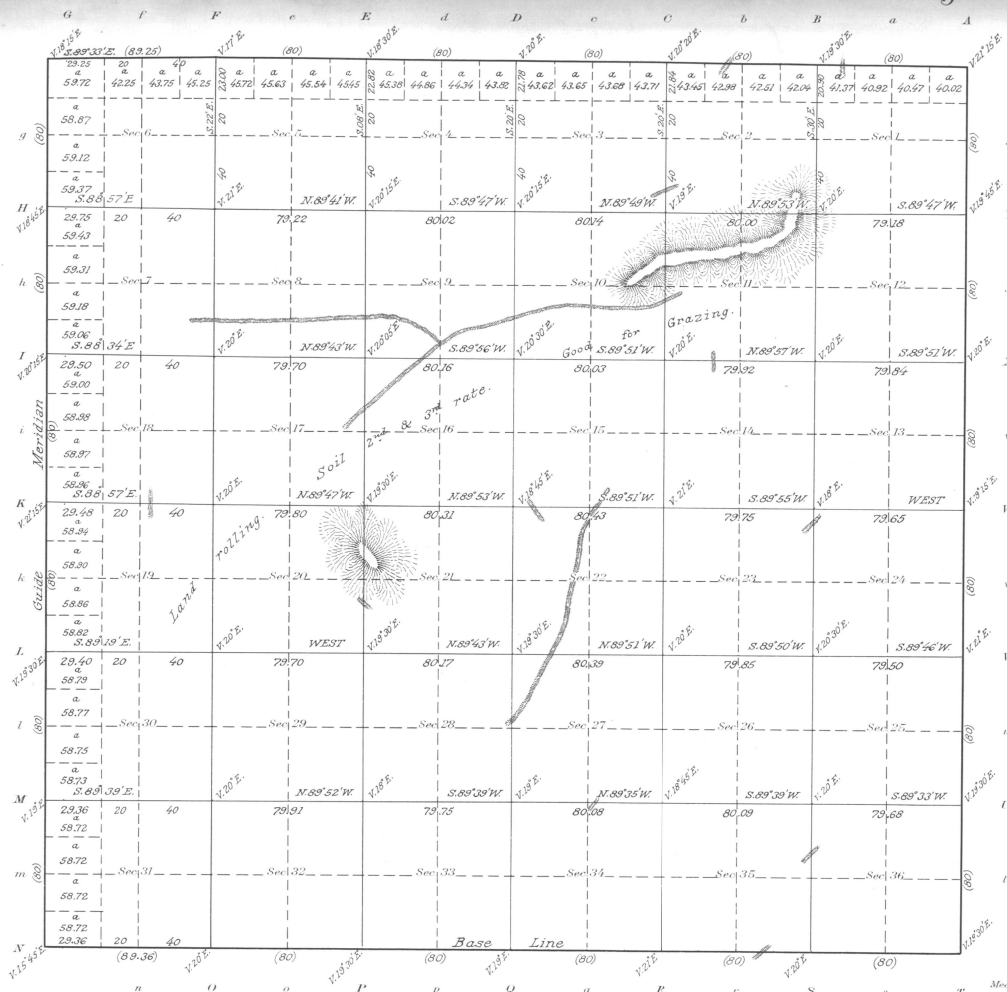


Township N<sup>o</sup> 1 North Range N<sup>o</sup> 31 East of the Willamette Meridian, Oregon.



I certify this to be a correct copy of the Original filed on file in this office.  
 U.S. Surveyor General's Office,  
 Portland, Oregon,  
 Dec. 7, 1918. *Eugene Smith*  
 Surveyor General of Oregon.

Areas in Acres	
Public Land	
Indian Reservation	
Indian Allotments	
Mineral Claims	
Water Surface	
<b>Total Area</b>	<b>23,575.82</b>

Scale 40 chains to an inch

Mean Magnetic Declination

Surveys Designated	By Whom Surveyed	No.	Contract Date	Amount of Surveys		When Surveyed	
				Mis.	chs.	beg.	completed
Boundaries North & East Subdivisions	Josiah A. Burnett.	32	Sept. 12, 1860.	12	09	25	Oct. 17, 1860. Oct. 19, 1860.
Resurvey of Base Line	"	"	"	60	55	10	"
				06	09	36	"

The above map of Township No. 1 North Range No. 31 East of the Willamette Meridian Oregon, is strictly conformable to the field notes of the survey thereof on file in this office, which have been examined and approved  
 U. S. Surveyor General's Office, Ogn.  
*Eugene City, December 5<sup>th</sup>, 1860.*  
*W. W. Chapman*  
 Surveyor General of Oregon.