

u20

Index File No. C-13

CORNER RECORD (SEARCH)

Tract or Survey No. _____
Cor. C-13 ⁴⁴ ¹¹

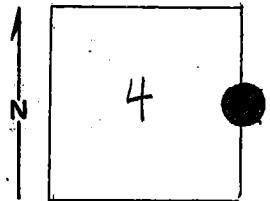
T 7S R. 33E

R.D. Ukiah County Umatilla

Merid. Will.

N.F. Umatilla State Oregon

CORNER DIAGRAM



DESCRIBE CORNER MONUMENT FOUND

None

Brass Cap! See Mon. File

DESCRIBE BEARING TREES OR OTHER OFFICIAL ACCESSORIES FOUND

28" DBH Pine, bearing N42W, 39 lks from 1/4 corner,
tree dead but still standing.
The scribing (45) is readable.

PHOTO IDENTIFICATION DATA

Photo No. EQO, 7-210(9-1-66)

Filed At. _____

Object Ident. Pom. Further down

Ident. By 10" pine bears S40E, 120'
signature

DESCRIBE CORNER LOCATION RELATIVE TO NEAR-BY FEATURES, ALSO HOW TO REACH CORNER

A narrow road bearing N is 30 lks East of corner,
Intersection of narrow road and main access road is S,
2 ch. from corner.

PLANE COORDINATE POSITION DATA

State _____ Zone _____

X _____

Y _____

Estab. By _____
Agency

15 Ken Mason
Signature

Eng Aide
Title

USFS
Division

Umatilla S.O.
Headquarters

7-25-69
Date

7100-52
REV. 65 5

CORNER RECORD (PERPETUATION)

MONUMENT: DESCRIBE NEW MONUMENT SET, OR WORK DONE TO PRESERVE EXISTING MONUMENT

9

ACCESSORIES : DESCRIBE NEW BT'S WITNESS OBJECTS ETC. ESTABLISHED, OR WORK DONE TO PRESERVE EXISTING EVIDENCE

Posted BT sign (S4-3) on BT.
Posted Attention sign on BT.
Painted "BT" on BT in red.
Tied red flagging to BT.

10

Work Done By MIKE LILLY TITLE ENG'R Aids Date 7/25/69 State Registration No. USFS
or Agency

Certified Cor. Record Prepared? Yes No Filed At: _____ Date _____

11

REMARKS

An iron pipe 4" above ground is in approx. location of corner identified area on photo from 2"/mile map.
A location poster is located on N. side of main access road and bears S35W, 110 lks from corner.

12

Index File No. C-13 T. 7S R. 35E M. Will. Tract or Surv. No. _____ Cor. C-13

13