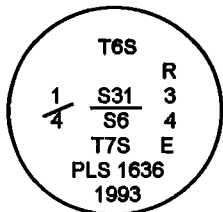


**CORNER DIAGRAM**



**DESCRIBE CORNER MONUMENT FOUND.**

Found a 2 1/2" aluminum pipe, with a 3 1/4" aluminum cap, projecting 5" out of the ground surrounded by a small stone mound.

**DESCRIBE BEARING TREES OR OTHER OFFICIAL ACCESSORIES FOUND**

- 15" western Larch, N. 24 E., 45.3 feet, with scribing visible on double blaze.
- 14" Western Larch, N. 45 E., 9.2 feet, with scribing visible on chopped open blaze.
- 10" Western Larch, S. 62 E., 23.1 feet, with scribing visible on double blaze.
- 24" White Fir, S. 20 1/2 W., 53.9 feet, with scribing visible on double blaze.
- 14" Western Larch, N. 27 1/4 W., 28.9 feet, with scribing visible on double blaze.

**PHOTO IDENTIFICATION DATA**

Photo No.  
Filed At.  
Object Ident.  
Ident. By

Signature

**DESCRIBE CORNER LOCATION RELATIVE TO NEAR-BY FEATURES, ALSO HOW TO REACH CORNER**

**PLANE COORDINATE POSITION DATA**

State: Zone:

X:

Y:

Datum:

Signature  
D. Schlaich

Title  
Land Surveyor

Division

Headquarters  
S.O.

Date  
09/1997

FS-7100-52 (3/97)

CORNER RECORD (PERPETUATION)

MONUMENT: DESCRIBE NEW MONUMENT SET, OR WORK DONE TO PRESERVE EXISTING MONUMENT

ACCESSORIES: DESCRIBE NEW BT'S WITNESS OBJECTS ETC. ESTABLISHED, OR WORK DONE TO PRESERVE EXISTING EVIDENCE

Work Done By D. Schlaich Title Land Surveyor Date 09/1997 State Registration No. \_\_\_\_\_  
or Agency \_\_\_\_\_  
Certified Corner Record Prepared?  Yes  No Filed At: Umatilla County Surveyor's Office Date 11/1997

REMARKS

Index  
File No. Z-7

CORNER RECORD (SEARCH)

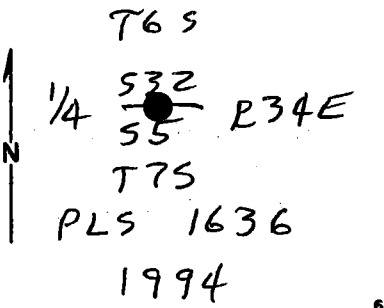
(Ref. FSM 7151.4)

Tract or Survey No. \_\_\_\_\_  
Cor. No. \_\_\_\_\_

T 6S R. 34E  
Merid. WILLAMETTE

R.D. NORTH FORK JOHN DAY County GRANT/UMATILLA LINE  
N.F. UMATILLA State OREGON

CORNER DIAGRAM



DESCRIBE CORNER MONUMENT FOUND

NONE - CORNER POST GONE

DESCRIBE BEARING TREES OR OTHER OFFICIAL ACCESSORIES FOUND

ORIG. 10" - NOW 14" LARCH BEARS N45°E,  
 9.24 FT. I OPEN LARGE HEALED BLAZE  
 TO SCRIBES "1/4S"  
 ORIG. 11" LARCH IS GONE

PHOTO IDENTIFICATION DATA

Photo No. \_\_\_\_\_  
 Filed At. \_\_\_\_\_  
 Object Ident. \_\_\_\_\_  
 Ident. By \_\_\_\_\_  
 Signature \_\_\_\_\_

DESCRIBE CORNER LOCATION RELATIVE TO NEAR-BY FEATURES, ALSO HOW TO REACH CORNER

1 MILE SOUTH OF END OF ROAD

PLANE COORDINATE POSITION DATA

State \_\_\_\_\_ Zone \_\_\_\_\_  
 X \_\_\_\_\_  
 Y \_\_\_\_\_  
 Estab. By \_\_\_\_\_  
 Agency \_\_\_\_\_

Signature Dennis L. Hayford Title \_\_\_\_\_ Division PLS 1636 Headquarters S.O. Date 9/19/94  
 FS-7100-52 (3/68)

**CORNER RECORD (PERPETUATION)**

**MONUMENT: DESCRIBE NEW MONUMENT SET, OR WORK DONE TO PRESERVE EXISTING MONUMENT**

SET 2 1/2" x 30" ALUM. PIPE AT RECORD BEARING & DISTANCE. 3 1/2" ALUM CAP ATTACHED IS MARKED AS SHOWN IN DIAGRAM ON REVERSE. SMALL M.O.S.

**ACCESSORIES: DESCRIBE NEW BT'S WITNESS OBJECTS ETC. ESTABLISHED, OR WORK DONE TO PRESERVE EXISTING EVIDENCE**

10" LARCH S62°E, 23.1 FT } SCRIBED "1/4 S5 BT"  
 24" W. FIR S20°30'W, 53.9 FT. }  
 15" LARCH N24°E, 45.3 FT. } SCRIBED "1/4 S32 BT"  
 14" LARCH N27°15'W, 28.9 FT. }

10

Work Done By: D. GAYLORD Title: FOREST L.S. Date: 9-7-94 State Registration No. 1636  
 or Agency:

Certified Cor. Record Prepared?  Yes  No Filed At: GRANT & UMATILLA CO. Date 9-19-94

REMARKS

Index File No.	T.	R.	M.	Tract or Surv. No.	Cor.
7-7	6S	34E	WILL		

12

13