

Index File No. E-13

CORNER RECORD (SEARCH)

(Ref. FSM 7151.4)

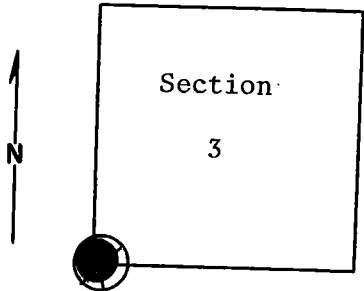
T 6S R. 33E

R.D. Ukiah County Umatilla Tract or Survey No. 5-98 Cor. No. E-13

Merid. Willamette

N.F. Umatilla State Oregon

CORNER DIAGRAM



DESCRIBE CORNER MONUMENT FOUND

Material: Wood stake. Size: 2" x 2".

Three feet above ground.

Brass Cap! see Mon. File.

DESCRIBE BEARING TREES OR OTHER OFFICIAL ACCESSORIES FOUND

A 22-inch tamarack with BLM B.T. poster bears N32°E approximately 14 feet from possible corner. Tree is scribed on SW face, "R33E, S3."

A 20-inch dead fir snag (15 feet high) bears S20°E 6 feet in distance. Snag has been chopped on NW face but no scribing visible. (Possible B.T.)

(cont. in block #12.)

DESCRIBE CORNER LOCATION RELATIVE TO NEAR-BY FEATURES, ALSO HOW TO REACH CORNER

PHOTO IDENTIFICATION DATA

Photo No. _____
 Filed At. _____
 Object Ident. _____
 Ident. By _____
 Signature _____

PLANE COORDINATE POSITION DATA

State _____ Zone _____
 X _____
 Y _____
 Estab. By _____
 Agency _____

Signature B. Moore Title Engineering Technician Division _____ Headquarters S. O. Date December 12, 1974

CORNER RECORD (PERPETUATION)

MONUMENT: DESCRIBE NEW MONUMENT SET, OR WORK DONE TO PRESERVE EXISTING MONUMENT

ACCESSORIES : DESCRIBE NEW BT'S WITNESS OBJECTS ETC. ESTABLISHED, OR WORK DONE TO PRESERVE EXISTING EVIDENCE

Work Done By _____ Title _____ Date _____ State Registration No. _____
or Agency _____

Certified Cor. Record Prepared ? Yes No Filed At: _____ Date _____

REMARKS

(Block #3, cont.)

A 24-inch dead fir bears N64°W approximately 14 feet from stake. It is blazed on S.E. face. Scribing visible but needs opening to ~~read~~. BLM B.F. poster on tree.

read.

Index-File No. T. R. M. Tract or Surv. No. Cor. _____