

Index  
File No. C-13

**CORNER RECORD (SEARCH)**

(Ref. FSM 7151.4)

Tract or  
Survey No. \_\_\_\_\_ No. C-13

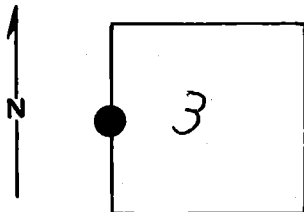
T 6S R. 33E

R.D. Ukiah County \_\_\_\_\_

Merid. Willamette

N.F. Umatilla State Oregon

**CORNER DIAGRAM**



DESCRIBE CORNER MONUMENT FOUND  
Brass Cap: notes on file @ Ukiah R.D.  
1968

DESCRIBE BEARING TREES OR OTHER OFFICIAL ACCESSORIES FOUND

**PHOTO IDENTIFICATION DATA**

Photo No. \_\_\_\_\_  
Filed At. \_\_\_\_\_  
Object Ident. \_\_\_\_\_  
Ident. By \_\_\_\_\_  
*Signature*

DESCRIBE CORNER LOCATION RELATIVE TO NEAR-BY FEATURES, ALSO HOW TO REACH CORNER

**PLANE COORDINATE POSITION DATA**

State \_\_\_\_\_ Zone \_\_\_\_\_  
X \_\_\_\_\_  
Y \_\_\_\_\_  
Estab. By \_\_\_\_\_  
*Agency*

Signature \_\_\_\_\_ Title \_\_\_\_\_ Division \_\_\_\_\_ Headquarters \_\_\_\_\_ Date \_\_\_\_\_ 7100-52-(3/68)

**CORNER RECORD (PERPETUATION)**

GPO 902-673

**MONUMENT : DESCRIBE NEW MONUMENT SET, OR WORK DONE TO PRESERVE EXISTING MONUMENT**

**ACCESSORIES : DESCRIBE NEW BT'S WITNESS OBJECTS ETC. ESTABLISHED, OR WORK DONE TO PRESERVE EXISTING EVIDENCE**

**Work Done By.** \_\_\_\_\_ **Title** \_\_\_\_\_ **Date** \_\_\_\_\_ **State Registration No.** \_\_\_\_\_  
**or Agency** \_\_\_\_\_

**Certified Cor. Record Prepared ?** Yes  No  **Filed At:** \_\_\_\_\_ **Date** \_\_\_\_\_

T 6 S 1/4 R 33 E  
 S 4 | S 3  
 1968

REMARKS

**Index File No.** \_\_\_\_\_ **T.** \_\_\_\_\_ **R.** \_\_\_\_\_ **M.** \_\_\_\_\_ **Tract or Surv. No.** \_\_\_\_\_ **Cor.** \_\_\_\_\_