

Index File No. L-25

CORNER RECORD (SEARCH)

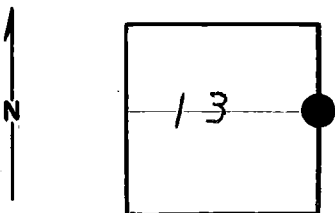
(Ref. FSM 7151.4)

Tract or Survey No. \_\_\_\_\_ Cor. No. \_\_\_\_\_

T 6 S R 31 E R.D. VK194 County \_\_\_\_\_

Merid. \_\_\_\_\_ N.F. \_\_\_\_\_ State \_\_\_\_\_

CORNER DIAGRAM



DESCRIBE CORNER MONUMENT FOUND

C. R. T 6 S R 3 2 E L-1

DESCRIBE BEARING TREES OR OTHER OFFICIAL ACCESSORIES FOUND

*Monumentation file*

PHOTO IDENTIFICATION DATA

Photo No. \_\_\_\_\_  
Filed At. \_\_\_\_\_  
Object Ident. \_\_\_\_\_  
Ident. By \_\_\_\_\_  
*Signature*

DESCRIBE CORNER LOCATION RELATIVE TO NEAR-BY FEATURES, ALSO HOW TO REACH CORNER

PLANE COORDINATE POSITION DATA

State \_\_\_\_\_ Zone \_\_\_\_\_  
X \_\_\_\_\_  
Y \_\_\_\_\_  
Estab. By \_\_\_\_\_  
*Agency*

Signature

Title

Division

Headquarters

Date

7100-52-(3/68)

*J. Holloman*

*2/75*

**CORNER RECORD (PERPETUATION)**

**MONUMENT: DESCRIBE NEW MONUMENT SET, OR WORK DONE TO PRESERVE EXISTING MONUMENT**

9

**ACCESSORIES : DESCRIBE NEW BT's WITNESS OBJECTS ETC. ESTABLISHED, OR WORK DONE TO PRESERVE EXISTING EVIDENCE**

10

Work Done By \_\_\_\_\_ Title \_\_\_\_\_ Date \_\_\_\_\_ State Registration No. or Agency \_\_\_\_\_

Certified Cor. Record Prepared ? Yes No Filed At: \_\_\_\_\_ Date \_\_\_\_\_

11

**REMARKS**

12

Index File No. T. R. M. Tract or Surv. No. Cor. 13

USDA-FOREST SERVICE

Index File No. L-25

CORNER RECORD (SEARCH)

(Ref. FSM 7151.4)

Tract or Survey No. Sec. 13 Cor. No. E 1/4 cor

T 6S R. 31E

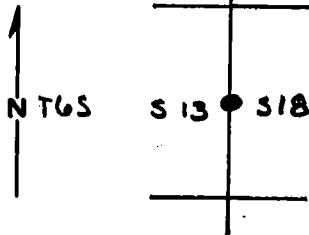
R.D. Dale County Umatilla

Merid. Willamette

N.F. Umatilla State Oregon

CORNER DIAGRAM

R31E R32E



1/4 corner

DESCRIBE CORNER MONUMENT FOUND

Monumented with original basalt stone, 18" x 12" x 7", marked 1/4 on face.

DESCRIBE BEARING TREES OR OTHER OFFICIAL ACCESSORIES FOUND

PHOTO IDENTIFICATION DATA

Photo No. \_\_\_\_\_

Filed At. \_\_\_\_\_

Object Ident. \_\_\_\_\_

Ident. By \_\_\_\_\_

*Signature*

PLANE COORDINATE POSITION DATA

State \_\_\_\_\_ Zone \_\_\_\_\_

X \_\_\_\_\_

Y \_\_\_\_\_

Estab. By \_\_\_\_\_

*Agency*

DESCRIBE CORNER LOCATION RELATIVE TO NEAR-BY FEATURES, ALSO HOW TO REACH CORNER

*Signature*

*Title*

*Division*

*Headquarters*

*Date*

151 J.C. Ives

Cadastral Surveyor

1968

7100-52-(3/68)

CORNER RECORD (PERPETUATION)

MONUMENT: DESCRIBE NEW MONUMENT SET, OR WORK DONE TO PRESERVE EXISTING MONUMENT

Set an iron post, 28" x 2 1/2", 10" in the ground, to bedrock, in a mound of stone, 4 ft. base, to top, with brass cap marked. Buried original stone alongside the iron post.

ACCESSORIES: DESCRIBE NEW BT'S WITNESS OBJECTS ETC. ESTABLISHED, OR WORK DONE TO PRESERVE EXISTING EVIDENCE

No suitable BT's available

Work Done By J. C. Ives Title Cadastral Surv. Date 1968 State Registration No. or Agency \_\_\_\_\_

Certified Cor. Record Prepared? Yes  No  Filed At: \_\_\_\_\_ Date \_\_\_\_\_

Info copied from file card L-1 T6S R32E <sup>REMARKS</sup>

Index File No. L-25 T. 6S R. 31E M. Willamette Tract or Surv. No. Sec. 13 Cor. E 1/4 cor.

Index  
File No. L-1

**CORNER RECORD (SEARCH)**  
(Ref. FSM 7151.4)

Tract or  
Survey No. \_\_\_\_\_ Cor.  
No. \_\_\_\_\_

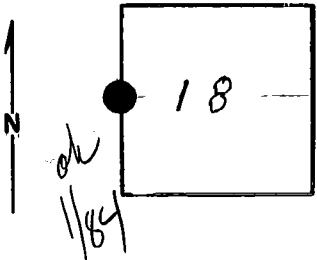
T 6 R. 32

R.D. Ukiah County \_\_\_\_\_

Merid. \_\_\_\_\_

N.F. \_\_\_\_\_ State \_\_\_\_\_

**CORNER DIAGRAM**



**DESCRIBE CORNER MONUMENT FOUND**

*Brass Cap:*

*T 6 S  
R 31 E R 32 E  
1/4  
S 13 | S 18  
1968*

**DESCRIBE BEARING TREES OR OTHER OFFICIAL ACCESSORIES FOUND**

*See Monumentation file*

**PHOTO IDENTIFICATION DATA**

Photo No. \_\_\_\_\_  
Filed At. \_\_\_\_\_  
Object Ident. \_\_\_\_\_  
Ident. By \_\_\_\_\_  
*Signature*

**DESCRIBE CORNER LOCATION RELATIVE TO NEAR-BY FEATURES, ALSO HOW TO REACH CORNER**

**PLANE COORDINATE POSITION DATA**

State \_\_\_\_\_ Zone \_\_\_\_\_  
X \_\_\_\_\_  
Y \_\_\_\_\_  
Estab. By \_\_\_\_\_  
*Agency*

Signature  
*T. Hollaman*

Title \_\_\_\_\_ Division \_\_\_\_\_ Headquarters \_\_\_\_\_ Date *2/75*  
7100-52-(3/68)

**CORNER RECORD (PERPETUATION)**

**MONUMENT: DESCRIBE NEW MONUMENT SET, OR WORK DONE TO PRESERVE EXISTING MONUMENT**

**ACCESSORIES : DESCRIBE NEW BT's WITNESS OBJECTS ETC. ESTABLISHED, OR WORK DONE TO PRESERVE EXISTING EVIDENCE**

**Work Done By** \_\_\_\_\_ **Title** \_\_\_\_\_ **Date** \_\_\_\_\_ **State Registration No. or Agency** \_\_\_\_\_

**Certified Cor. Record Prepared ?** Yes  No  **Filed At:** \_\_\_\_\_ **Date** \_\_\_\_\_

**REMARKS**

**Index File No.** \_\_\_\_\_ **T.** \_\_\_\_\_ **R.** \_\_\_\_\_ **M.** \_\_\_\_\_ **Tract or Surv. No.** \_\_\_\_\_ **Cor.** \_\_\_\_\_