

Index
 File No. C-17
 T 6 S. R. 32 E.
 Merid. W.

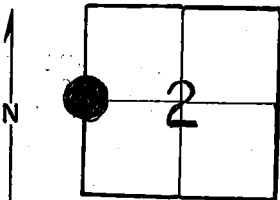
CORNER RECORD (SEARCH)

(Ref. FSM 7151.4)

Tract or Survey No. _____
 Cor. No. C-17

R.D. UKIAH County UMATILLA
 N.F. UMATILLA State ORE.

CORNER DIAGRAM



DESCRIBE CORNER MONUMENT FOUND

Pine tree 16" D.B.H. Good Condition, Blazed on S. W. Face

● see mon. file, Brass Cup Monumented by BLK 2

DESCRIBE BEARING TREES OR OTHER OFFICIAL ACCESSORIES FOUND

B.t. 14" LARCH Blazed, BRs. S. 289° W. Approx. 24 ft.

Found F.S. location Poster on Fir near corner

DESCRIBE CORNER LOCATION RELATIVE TO NEAR-BY FEATURES, ALSO HOW TO REACH CORNER

PHOTO IDENTIFICATION DATA

Photo No. _____
 Filed At. _____
 Object Ident. _____
 Ident. By _____

Signature

PLANE COORDINATE POSITION DATA

State _____ Zone _____
 X _____
 Y _____
 Estab. By _____
 Agency _____

Signature O.M.S.

Title _____

Division _____

Headquarters UKIAH

Date

5-21-67 100-52 (3/68)

CORNER RECORD (PERPETUATION)

MONUMENT : DESCRIBE NEW MONUMENT SET, OR WORK DONE TO PRESERVE EXISTING MONUMENT

ACCESSORIES : DESCRIBE NEW BT's WITNESS OBJECTS ETC. ESTABLISHED, OR WORK DONE TO PRESERVE EXISTING EVIDENCE

Work Done By _____ Title _____ Date _____ State Registration No. or Agency _____
Certified Cor. Record Prepared ? Yes No Filed At: _____ Date _____

REMARKS

Index File No. C-17 J. R. M. Tract or Surv. No. Cor. _____