

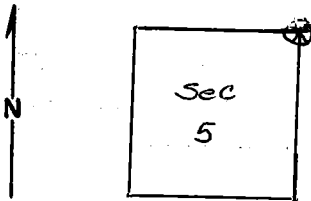
Index  
 File No. A-9  
 T 6S R. 31E  
 Merid. W.M.

**CORNER RECORD (SEARCH)**  
 (Ref. FSM 7151.4)

Tract or  
 Survey No. \_\_\_\_\_  
 Cor.  
 No. \_\_\_\_\_

R.D. Ukiah County Umatilla  
 N.F. Umatilla State Oregon

**CORNER DIAGRAM**



**DESCRIBE CORNER MONUMENT FOUND**

Found a stone mound 36" in diameter, markings old native stake in center of mound.

**DESCRIBE BEARING TREES OR OTHER OFFICIAL ACCESSORIES FOUND**

No BT's were originally established. There is a location poster on a 12" tree approx. 40' south. Mound fits called bearing and distance from corner to sections 31 and 32, T5S, R31E which is a stone.mound (with 2 BT's approx. 228' west).

**DESCRIBE CORNER LOCATION RELATIVE TO NEAR-BY FEATURES, ALSO HOW TO REACH CORNER**

**PHOTO IDENTIFICATION DATA**

Photo No. \_\_\_\_\_  
 Filed At. \_\_\_\_\_  
 Object Ident. \_\_\_\_\_  
 Ident. By \_\_\_\_\_  
 Signature \_\_\_\_\_

**PLANE COORDINATE POSITION DATA**

State \_\_\_\_\_ Zone \_\_\_\_\_  
 X \_\_\_\_\_  
 Y \_\_\_\_\_  
 Estab. By \_\_\_\_\_  
 Agency \_\_\_\_\_

Signature  
T. Hollamon

Title Eng Tech Division \_\_\_\_\_ Headquarters \_\_\_\_\_

Date 10/29/76 7100-52-(3/68)

**CORNER RECORD (PERPETUATION)**

**MONUMENT: DESCRIBE NEW MONUMENT SET, OR WORK DONE TO PRESERVE EXISTING MONUMENT**

9

**ACCESSORIES : DESCRIBE NEW BT'S WITNESS OBJECTS ETC. ESTABLISHED, OR WORK DONE TO PRESERVE EXISTING EVIDENCE**

10

Work Done By \_\_\_\_\_ Title \_\_\_\_\_ Date \_\_\_\_\_ State Registration No. \_\_\_\_\_  
or Agency \_\_\_\_\_

Certified Cor. Record Prepared ? Yes No Filed At: \_\_\_\_\_ Date \_\_\_\_\_

11

**REMARKS**

12

Index File No. \_\_\_\_\_ T. \_\_\_\_\_ R. \_\_\_\_\_ M. \_\_\_\_\_ Tract or Surv. No. \_\_\_\_\_ Cor. \_\_\_\_\_

13