

OREGON CORNER RESTORATION FORM

COUNTY: Umatilla. DATE: 03/12/08

CORNER DESIGNATION: V-19, The North Quarter Corner of Section 35, Township 6 North, Range 36 East, W.M..

PREVIOUS RENEWALS/SURVEYS ETC.: Corner originally established by Odell & Lewis under GLO Contract No. 110, dated February 7, 1865. Notes State: Set 1/4 Sec. post. Drove charred stake; dug pits & raised mound, as per instructions.

MONUMENT AND ACCESSORIES FOUND: None.

MONUMENT MARKING DETAIL:

T6N R36E
1 S26
4 S35
2008
PLS 1106

MONUMENT SET: I held the South edge of a old locust post as the best remaining evidence of the original corner. From the locust post, old wire fence remains and field berms extend East, West and North. At a point just South of the old locust post, set a 2 3/8" brass cap on a 1 1/4" x 30" galvanized iron pipe, 30" in the ground and places 2 stones by the monument. Monument marked as shown in "Monument Marking Detail".

New accessories:

A 6" well casing, 6 feet above ground level, bears South 83 1/2° East, 18.0 feet.

A 5/8" x 24" rebar with a red plastic cap marked "OR PLS 1106, WA PLS 17372", bears South 86° West, 25.9 feet, in old fence line.

A 5/8" x 24" rebar with a red plastic cap marked "OR PLS 1106, WA PLS 17372", bears North 58 1/2° West, 14.5 feet.

A 5/8" x 24" rebar with a red plastic cap marked "OR PLS 1106, WA PLS 17372", bears North 19° East, 14.8 feet.

Wired bearing object signs to the three rebar accessories and nailed witness sign to locust post.

LOCATION AND COMMENTS: Corner is just South of 12" locust post fence corner, an old wire fence remains East-West and North (woven wire North), there are also field berms North and East-West.

OREGON STATE PLANE COORDINATE, North Zone, NAD 83(91), International Feet:

N = 844688.83
E = 8767266.13

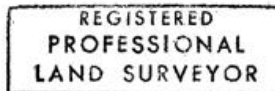
FIRM: Wells Surveying
P.O. Box 1696
Pendleton, OR 97801

COMPASS DECLINATION: 18° East

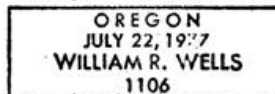
Surveyor's Seal

Witnesses: Jason Wells, LSIT

6N36V19



William R. Wells



Expires 6-30-10

09-10-c