

Segregated Surveys:

Name: SOUTHEAST CORNER SECTION 13

Corner No.:

Reserve, Townsite

DLC, HES, Tract, Mining Claim, Indian Allotment, Federal

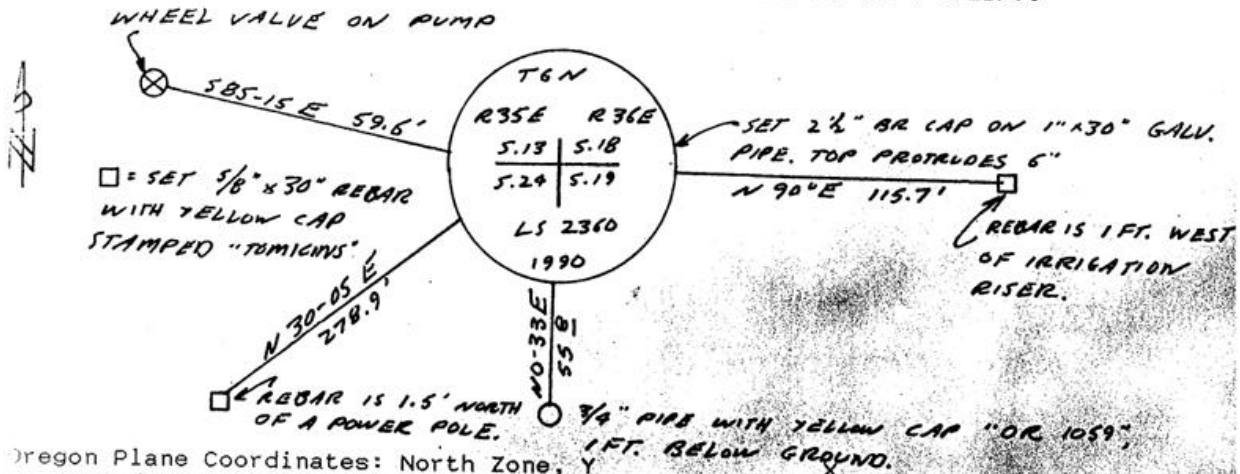
1. History of Corner Establishment and Subsequent Restoration:

CORNER WAS ORIGINALLY ESTABLISHED AS A "POST" BY GLO SURVEYORS ODELL AND LEWIS IN FEBRUARY, 1865. A "1 1/4" PIPE WAS SET BY MUNNS IN 1985 ON THE EAST LINE OF RANGE 35 AT A PROPORTIONATE DISTANCE, BUT "WAS NOT CONSIDERED A SECTION CORNER". SEE SURVEY 86-104-B, UMATILLA CO. SURVEYOR. THERE ARE NO FURTHER RECORDS FOR THIS CORNER.

2. Description of Evidence Found:

FOUND A 3/4" PIPE WITH YELLOW CAP STAMPED "OR-1059" 40' SOUTH OF A DIRT ROAD AND 55.76' SOUTH OF SECTION CORNER ESTABLISHED BY INTERSECTING A LINE EXTENDED FROM THE SOUTHWEST CORNER OF SEC.13 THROUGH THE SOUTH 1/4 CORNER OF SEC.13 WITH THE EAST RANGE LINE. SECTION CORNER THUS ESTABLISHED FALLS ON THE NORTH EDGE OF A DIRT ROAD RUNNING EAST AND NORTHWEST. GLO NOTES SECTION CORNER FALLS "IN ROAD, COURSE NORTHWEST".

3. Describe Monument, Accessories, and Corollary Data to Perpetuate this Corner Location. Diagram corner, indicate meridian and reference to map of Record. Surveyor's Field Book No. Page No. Date of Work 9/21/90



Oregon Plane Coordinates: North Zone, Y
Order Accuracy. Derived From:

Pin Pointed on Photo No. Date Located at

SURVEYOR'S CERTIFICATE

This corner record correctly represents work performed by me or under my direction in compliance with the provisions of the laws of the State of Oregon.

Date 10/29/90

Signature Paul W. Tomkins PLS 2360

Certificate No.

REGISTERED
[SEAL] PROFESSIONAL
LAND SURVEYOR

Paul W. Tomkins

OREGON
JULY 26, 1898
PAUL W. P. TOMKINS
2360

AUDITOR'S CERTIFICATE

Filed for record this ... day of ..., 19... at ... M. in Book ... of ... at Page ... at the request of

RECEIVED BY

Umatilla County Surveyor

County Auditor

Date 11-90
Signed by RA
No. 90-074-B