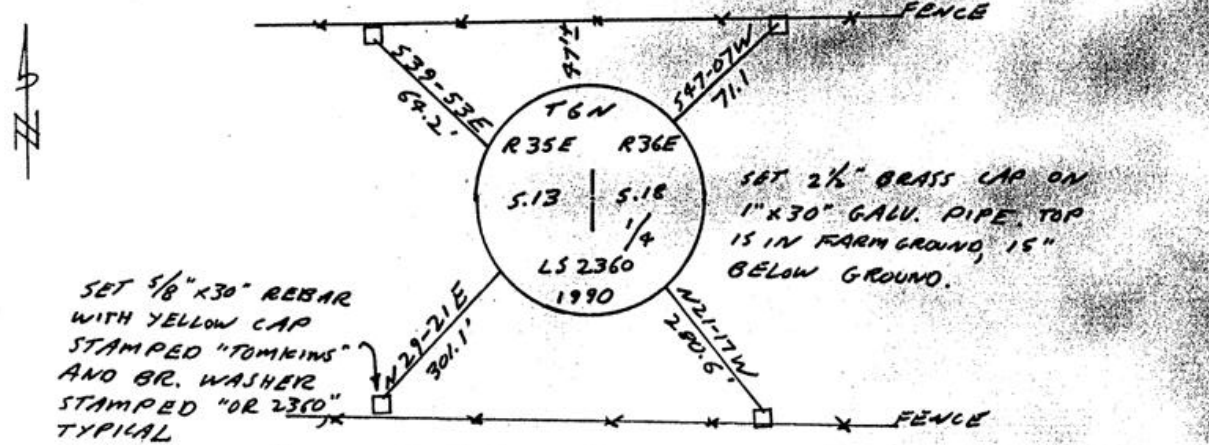


T 06N, R 35E., W.M. Corner Code No. L-25  
 Segregated Surveys:  
 Name: EAST 1/4 CORNER SECTION 13 Corner No.:  
 DLC, HES, Tract, Mining Claim, Indian Allotment, Federal Reserve, Townsite

1. History of Corner Establishment and Subsequent Restoration:  
 CORNER WAS ORIGINALLY ESTABLISHED AS CHARRED STAKE WITH PITS AND MOUND BY GLO SURVEYORS ODELL AND LEWIS IN 1865. THERE ARE NO MORE RECENT RECORDS CONCERNING THIS CORNER.

2. Description of Evidence Found:  
 NO EVIDENCE FOUND. CORNER WAS ESTABLISHED BY SINGLE PROPORTIONATE MEASUREMENT BETWEEN THE RE-ESTABLISHED SOUTHEAST SECTION CORNER AND A FOUND PIPE, HELD AS THE NORTHEAST CORNER OF FRACTIONAL SECTION 13.

3. Describe Monument, Accessories, and Corollary Data to Perpetuate this Corner Location. Diagram corner, indicate meridian and reference to map of Record. Surveyor's Field Book No. Page No. Date of Work 9/21/90



Oregon Plane Coordinates: North Zone, Y X  
 Order Accuracy. Derived From:

Pin Pointed on Photo No. Date Located at

SURVEYOR'S CERTIFICATE

This corner record correctly represents work performed by me or under my direction in compliance with the provisions of the laws of the State of Oregon.

Date 10/09/1990  
 Signature Paul W.P. Tomkins PLS 2360

REGISTERED PROFESSIONAL LAND SURVEYOR

*Paul W.P. Tomkins*

OREGON  
 JULY 25, 1998  
 PAUL W. P. TOMKINS  
 2360

Certificate No.

AUDITOR'S CERTIFICATE

Filed for record this ... day of ..., 19... at ... M. in Book ... of ... at Page ... at the request of .....

County Auditor

RECEIVED BY  
 Umatilla County Surveyor  
 Date 11-90  
 Rec'd by KA  
 No. 90-074-B