

OREGON CORNER RESTORATION FORM

JK-12

COUNTY: Umatilla

DATE: October 10, 2005

CORNER DESIGNATION: Closing Corner common to Sections 15 and 14,  
T. 6 North, Range 36 E.W.M.

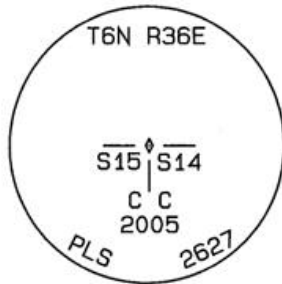
PREVIOUS RENEWALS/SURVEYS ETC.

Odell and Lewis drove charred stake (Contract No. 110, dated February 7, 1865) on the State Line 16 chains and 55 links west of Mile Post No. 33.

MONUMENT AND ACCESSORIES FOUND:

At a point established by holding the proportionate distance between a 5-1/2" steel pipe accepted as the Northwest Corner of Section 15 and the brass cap accepted as the Northeast Corner of Section 14 for easting and the remains of an old east-west fence for northing, and at a depth of 2-1/2", I found the remains of an ancient wood post, which was a dark reddish-brown dust that had the consistency of talcum powder when rubbed between the fingers. Upon close examination this dust originated from small flakes of what was obviously wood. These flakes disintegrated upon touching. There was also the remains of a hole. I believe this could be original post set by Odell and Lewis.

MONUMENT MARKING DETAIL:



OREGON STATE PLANE COORDINATES,  
NORTH ZONE, NAD'83('91), INT. FEET:

NORTH: 858,639.73

EAST: 8,764,163.91

MONUMENT SET (PROCEDURES AND DESCRIPTION):

At the position described above, I set a 2-3/8" brass cap on a 1" X 30" galvanized steel pipe marked as shown above 6" below the surface of the graveled shoulder of Hood Road.

NEW ACCESSORIES:

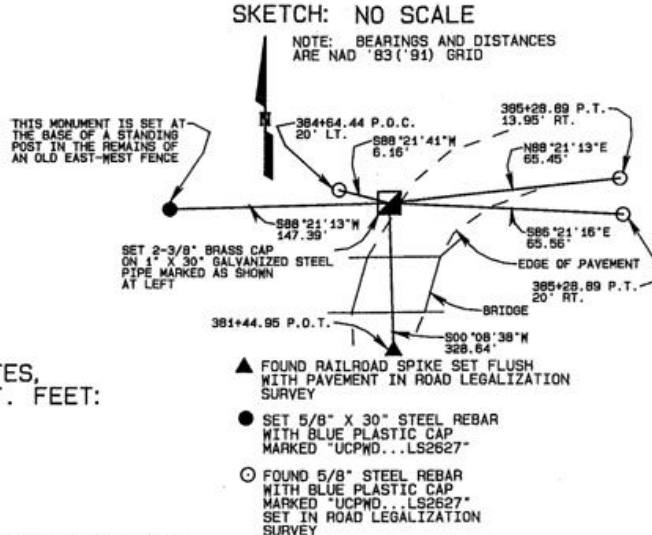
A 5/8" X 30" steel rebar with blue plastic cap marked "UCPWD...LS2627" bears S88°21'13"W, 147.39'. A bearing object tag is wired to a metal fence post and is set 1' south of the rebar.

A 5/8" X 30" steel rebar with blue plastic cap marked "UCPWD...LS2627" bears S88°21'41"W, 6.16'. A bearing object tag and "DO NOT DISTURB" sign are wired to a metal fence post set 1' west of the rebar.

A 5/8" X 30" steel rebar with blue plastic cap marked "UCPWD...LS2627" bears N88°21'13"E, 65.45'.

A 5/8" X 30" steel rebar with blue plastic cap marked "UCPWD...LS2627" bears S86°21'16"E, 65.56'.

A railroad spike stamped "LS2627" with punch mark marking Station 381+44.95 P.O.T. of Hood Road bears S00°08'38"W, 328.64'.



SKETCH: NO SCALE

NOTE: BEARINGS AND DISTANCES ARE NAD '83 ('91) GRID

- ▲ FOUND RAILROAD SPIKE SET FLUSH WITH PAVEMENT IN ROAD LEGALIZATION SURVEY
- SET 5/8" X 30" STEEL REBAR WITH BLUE PLASTIC CAP MARKED "UCPWD...LS2627"
- FOUND 5/8" STEEL REBAR WITH BLUE PLASTIC CAP MARKED "UCPWD...LS2627" SET IN ROAD LEGALIZATION SURVEY

LOCATION AND COMMENTS:  
MONUMENT IS SET 6" BELOW THE GRAVEL SHOULDER OF HOOD ROAD WHERE IT TURNS AND RUNS EAST ALONG THE STATE LINE.

COMPASS DECLINATION: N/A

FIRM/AGENCY:  
Umatilla County Road Dept.  
3920 Westgate  
Pendleton, Oregon 97801  
PARTY CHIEF: Gary Roberts

NOTES: None

WITNESS: None

SURVEYOR'S SEAL

REGISTERED  
PROFESSIONAL  
LAND SURVEYOR

*Gary R. Roberts*  
OREGON  
JULY 30, 1993  
GARY R. ROBERTS  
2627

RENEWS 12/31/06

RECEIVED BY  
Umatilla County Surveyor

Date 10-05

Rec'd By KK

No. 05-178-C