

OREGON CORNER RESTORATION FORM

Section: 35 & 36
Township: 6 North
Range: 34 East of the Willamette Meridian
County: Umatilla
Date: June 1, 2002

Corner Indexing Information: Township 6N Range 34E Corner Code Z 21 (Willamette Meridian)

Additional Identifier: (e.g. BLM designation for the corner, street intersection, plat name, block, lot, etc.)

This section corner is common to: Township 6N- Section 35 & 36 & 5 N Range 34E Section 1 & 2

Oregon Plane Coordinates: N: 837716.211 E: 8706360.649

Zone: North **Order:** second **Datum:** NAD83-91 **Convergence:** 1°24'21.5" **Scale Factor:** .99994910

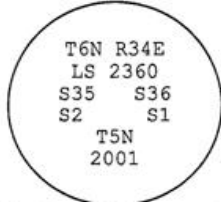
Previous Renewals/Surveys, etc.: This corner was originally set by U.S. Deputy Surveyors William Odell and William Lewis under their contract No. 110 dated February 7, 1865. The Surveyor General's notes state "set post corner, drove charred stake, dug pits and raised mounds per instructions". County Surveyor McComber, in 1902, calls the corner a "stone" (Co. Surveyor Book 1, Page 460). Barleson, in 1998, shows the corner as a "fence corner post" (Survey 98-108-B). Tomkins Land Surveying, in June 2000, shows the corner as a volcanic rock, set a rebar and a yellow cap (Survey 00-161-C).

Monument(s) & Accessories Found (Condition & Source):

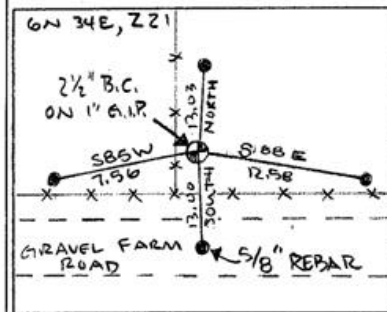
At the Southwest Corner of section 36, T6N R34E, found 5/8" iron rebar in a cairn of stone; at the Northeast corner is a large locust fence post.

Monument Set (Procedures & Description):

At the location of the rebar, set 1" x 30" flared end Galvanized Iron pipe with 2 1/4" brass cap stamped (see example below). Set inverted 8"x8"x10" Basalt stone along the north side of the monument. No definite markings on the stone, but it is an ideal survey stone. Placed cairn around the new monument.



Monument Detail:



New Accessories: WE SET:

A 5/8 rebar with yellow plastic cap stamped 'Tomkins Surveying' which bears S 88°E ~ 12.58 feet from the corner. Attached a Umatilla County Bearing Object Sign to Northerly face of the Locust Fence Post. A 5/8 rebar with yellow plastic cap stamped 'Tomkins Surveying' which bears South ~ 13.00 feet from the corner. Set 5/8 rebar in graveled farm road ~ no plate or post set. A 5/8 rebar with yellow plastic cap stamped 'Tomkins Surveying' which bears S 85°W ~ 7.56 feet from the corner. Attached a Umatilla County Bearing Object Sign to Rail Road Tie Fence Post. A 5/8 rebar with yellow plastic cap stamped 'Tomkins Surveying' which bears North ~ 13.03 feet from the corner. Attached a Umatilla County Bearing Object Sign to southerly face of the Railroad Tie Fence Post.

Location & Comments:

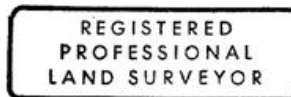
Compass Declination:

19° East

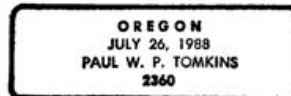
Firm/Agency: Tomkins Land Surveying, Inc.
 20 E. Poplar, Suite 204
 Walla Walla, WA 99362

Party Chief: Bryan Martin
Notes: Bryan Martin
Witness: Eric Flowers

Surveyor's Seal



Paul W. P. Tomkins



*Renews 6/30/07
 6/30/02*

03-23-C