

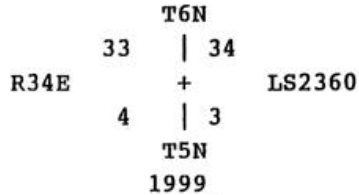
OREGON CORNER RESTORATION FORM

Sections: S.33 and S.34 Also S.3 and S.4
Township: 6N 5N
Range: 34 EWM 34 EWM
County: Umatilla
Date: 12/30/99
Corner Designation: Z-13

Previous Renewals/Surveys, etc.: Original GLO corner established as a post, with pits and mounds, by Odell, under contract No. 110, in 1865.

Monument(s) & Accessories Found (Condition & Source: Fence corner to North, South and West found, with flight panel set up at base.

Monument Detail: Set 1" pipe topped with a 2" brass cap stamped as shown.



Monument Set (Procedures & Description):

Set pipe on the West side of the existing fence corner, which was accepted as the perpetuation of the Section corner. Due to lack of corner perpetuation this is common practice in this Township. See surveys 97-46-A, Q-815-A, and 98-108-B.

New Accessories:

We set:

- A 5/8" rebar w/ yellow cap stamped 'Tomkins Surveying' which bears North 35.5' from the corner. Attached B.O. tag to fence post.
A 5/8" rebar w/ yellow cap stamped 'Tomkins Surveying' which bears East 14.5' from the corner. Attached B.O. tag to fence post.
A 5/8" rebar w/ yellow cap stamped 'Tomkins Surveying' which bears South 15.7' from the corner, and attached B.O. tag to fence post.
A 5/8" rebar w/ yellow cap stamped 'Tomkins Surveying' which bears West 10.0' from the corner.

Location & Comments:

The corner falls 500' west of the intersection of 2 power transmission lines, on the west side of a ridge.

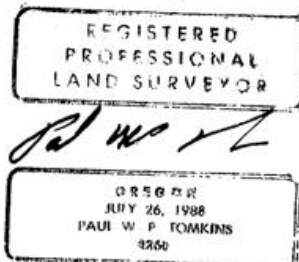
Compass Declination:

19° East Dec. used to tie B.O.'s,

Surveyor's Seal

Firm/Agency: Tomkins Land Surveying, Inc.
20 E. Poplar Ste. 204
Walla Walla WA 99362

Party Chief: Thomas S. Butler
Notes: Thomas S. Butler
Witness: Brianna Slater



2/19/00

00-31-B