

PAUL TOMKINS LAND SURVEYOR
 LAND CORNER RECORD

UMATILLA County

T 06N, R 34E., W.M.

Corner Code No. V-17

Segregated Surveys:

Name: SOUTHEAST CORNER SEC. 27

Corner No.:

DLC, HES, Tract, Mining Claim, Indian Allotment, Federal Re

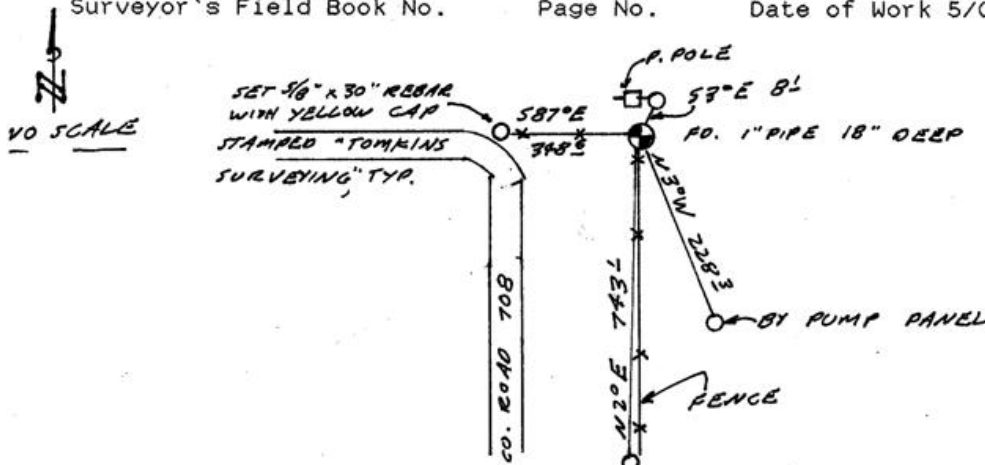
1. History of Corner Establishment and Subsequent Restoration:

CORNER WAS ORIGINALLY ESTABLISHED AS A POST, CHARRED STAKE, AND PITS BY GLO SURVEYOR ODELL IN 1865 UNDER CONTRACT NO. 110. IN 1902 (CO. SURVEYOR BOOK 1, PAGE 462) SURVEYOR SHOWS CORNER AS A "STONE". MACOMBER ALSO SHOWS CORNER AS A "STONE" AT BOOK 1, PAGE 464. IN 1909, (CO. SURVEYOR BOOK 2, PAGE 105), DICKSON DID NOT FIND THE STONE AND SET ONLY A "TEMPORARY CORNER."

2. Description of Evidence Found:

AT AN OLD FENCE CORNER TO SOUTH AND WEST, WE FOUND A 1" PIPE, IN GOOD CONDITION, BURIED 18" DEEP. PIPE IS APPROXIMATELY 20 TO 30 YEARS OLD. PIPE IS 61.64 CHAINS WEST OF A PROMINENT FENCE CORNER HELD AS A PROPERTY CORNER / 1/16 CORNER.

3. Describe Monument, Accessories, and Corollary Data to Perpetuate this Corner Location. Diagram corner, indicate meridian and reference to map of Record. Surveyor's Field Book No. Page No. Date of Work 5/09/92



Oregon Plane Coordinates: North Zone, Y
 Order Accuracy. Derived From:

Pin Pointed on Photo No. Date Located at

SURVEYOR'S CERTIFICATE

This corner record correctly represents work performed by me or under my direction in compliance with the provisions of the laws of the State of Oregon.

Signature Paul W. Tomkins Date 5/12/92

Certificate No.

REGISTERED
 PROFESSIONAL
 LAND SURVEYOR

Paul W. Tomkins

OREGON
 JULY 26, 1988
 PAUL W. P. TOMKINS
 2360

5/12/92

AUDITOR'S CERTIFICATE

Filed for record this 6 day of June, 1992 at Umatilla County Surveyor M. in Book 92-68-B at Page 6 at the request of

Date 6-92
 Rec'd By KK
 No. 92-68-B