

OREGON CORNER RESTORATION FORM

Section: 23, 24, 25 & 26
Township: 6 North
Range: 34 East of the Willamette Meridian
County: Umatilla
Date: June 1, 2002

Corner Indexing Information: Township 6N Range 34E Corner Code R 21 (Willamette Meridian)

Additional Identifier: (e.g. BLM designation for the corner, street intersection, plat name, block, lot, etc.)

This corner is common to sections 23, 24, 25 & 26.

Oregon Plane Coordinates: N: 848383.973 E: 8706321.653

Zone: North **Order:** second **Datum:** NAD83-91 **Convergence:** 1°24'23.7" **Scale Factor:** .99996222

Previous Renewals/Surveys, etc.: Corner was originally set as a post, mounds and pits by Ordell per contact No. 110. McComber, in 1902, shows a stone, survey book 1, page 462. Cote, in 1940, shows a rock with + in, survey Q-818-AX. Munns, in 1979, shows found a 3/8" bar, survey for Webster. Krumbein, in 1979, shows a 3/4" iron bar and 1/2" iron pin, set by Munns. Tomkins Land Surveying, in 2000, set a rebar and yellow cap from Krumbein's ties.

Monument(s) & Accessories Found (Condition & Source):

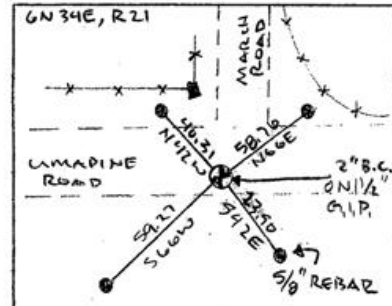
At the southwest corner of section 24, T6N R34E, 5/8 iron rebar and yellow plastic cap "Tomkins" with brass tag "WA19619 OR 02820LS at the pavement surface.

Monument Set (Procedures & Description):

Set 5/8 iron rebar with yellow plastic cap to 3" deep. Drove 1 1/2" x 15 1/2" galvanized iron pipe around the rebar plastic cap. Placed 10" of concrete around the pipe. Filled the pipe with concrete and set 2" brass disc on top of the pipe at 1/2 below the pavement surface stamped (see example below).

T6N R34E
LS 2360
S23 S24
S26 S25
2001

Monument Detail:



New Accessories: WE SET:

A 5/8 rebar with yellow plastic cap stamped 'Tomkins Surveying' which bears N 66°E ~ 58.76 feet from the corner. Attached a Umatilla County Bearing Object Sign to the Southwest face of a Locust Fence Post. A 5/8 rebar with yellow plastic cap stamped 'Tomkins Surveying' which bears S 42°E ~ 23.90 feet from the corner. Attached a Umatilla County Bearing Object Sign to the West face of Railroad tie fence post. A 5/8 rebar with yellow plastic cap stamped 'Tomkins Surveying' which bears S 66°W ~ 59.27 feet from the corner. Set steel t-post along side and attached a Umatilla County Bearing sign. A 5/8 rebar with yellow plastic cap stamped 'Tomkins Surveying' which bears N 42°W ~ 40.31 feet from the corner. Attached a Umatilla County Bearing Object Sign to the South face of Railroad tie fence post.

Location & Comments:

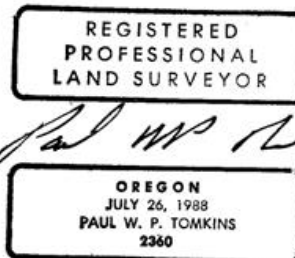
Compass Declination:

19° East

Firm/Agency: Tomkins Land Surveying, Inc.
 20 E. Poplar, Suite 204
 Walla Walla, WA 99362

Party Chief: Bryan Martin
Notes: Bryan Martin
Witness: Eric Flowers

Surveyor's Seal



*renews 6/30/04
 6/30/02*