

T 06N, R 34E., W.M.

Corner Code No. N-17

Segregated Surveys:

Name: SOUTHEAST CORNER FRACTIONAL SECTION 15

Corner No.:

Reserve, Townsite

DLC, HES, Tract, Mining Claim, Indian Allotment, Federal

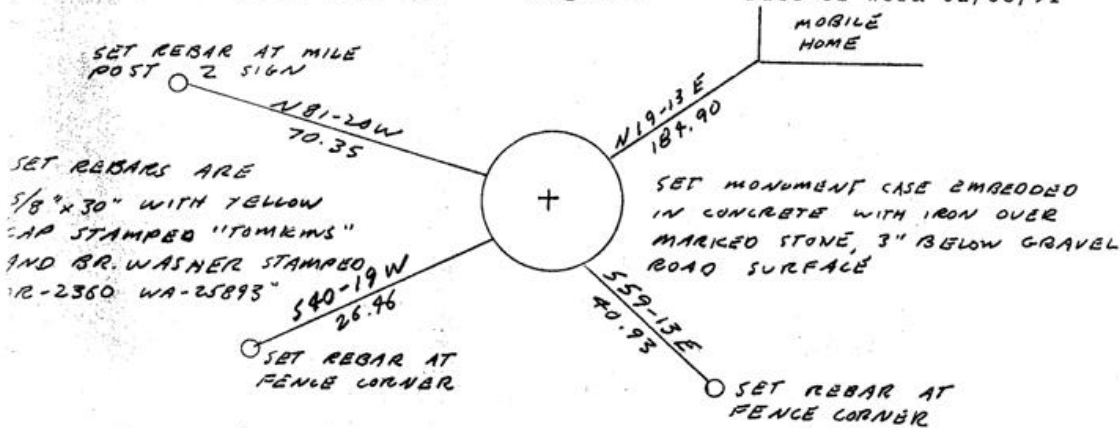
1. History of Corner Establishment and Subsequent Restoration:

CORNER ORIGINALLY SET BY ODELL IN 1865 UNDER GLO CONTRACT NO. 110 AS A POST, CHARRED STAKE, PITS, AND MOUND. CORNER IS SHOWN ON 1951 SURVEY BY CRIGER AND MELTON (Q-1618-AX) AS A "STONE MARKED X", AND ON 1951 SURVEY BY NEWBILL (Q-816-AX) AS A ROCK. 1990 SURVEY BY BARTLESON FOR MCKEE SHOWS CORNER AS "PND 60D SPIKE."

2. Description of Evidence Found:

FOUND 22" BELOW SURFACE OF SUNQUIST ROAD, 0.7 FT. NORTHEAST OF A 60D SPIKE, A BASALT STONE WITH AN 8" TOP WITH PLAINLY SCRIBED "+". I DID NOT REMOVE STONE FROM ITS POSITION.

3. Describe Monument, Accessories, and Corollary Data to Perpetuate this Corner Location. Diagram corner, indicate meridian and reference to map of Record. Surveyor's Field Book No. Page No. Date of Work 02/08/91



SET REBARS ARE 5/8" x 30" WITH YELLOW CAP STAMPED "TOMKINS" AND BR. WASHER STAMPED "W 12-2360 WA-25893"

Oregon Plane Coordinates: North Zone, Y Order Accuracy. Derived From:

Pin Pointed on Photo No. Date

Located at

REGISTERED PROFESSIONAL LAND SURVEYOR

SURVEYOR'S CERTIFICATE

This corner record correctly represents work performed by me or under my direction in compliance with the provisions of the laws of the State of Oregon.

Date 2-10-91

Signature Paul W.P. Tomkins

[SEAL] Paul W.P. Tomkins

OREGON JULY 26, 1988 PAUL W. P. TOMKINS 2360

Certificate No. 2360

AUDITOR'S CERTIFICATE

Filed for record this ... day of ..., 19... at ... M. in Book ... of ... at Page ... at the request of ...

County Auditor

Umatilla County Surveyor

Date 3-91

Rec'd By KA

No. 91-21-C

RECEIVED BY