

T 06N, R 34E., W.M.

Segregated Surveys:

Name: SOUTH 1/4 CORNER FRACTIONAL SECTION 15

Corner No.:

Reserve, Townsite

DLC, HES, Tract, Mining Claim, Indian Allotment, Federal

1. History of Corner Establishment and Subsequent Restoration:

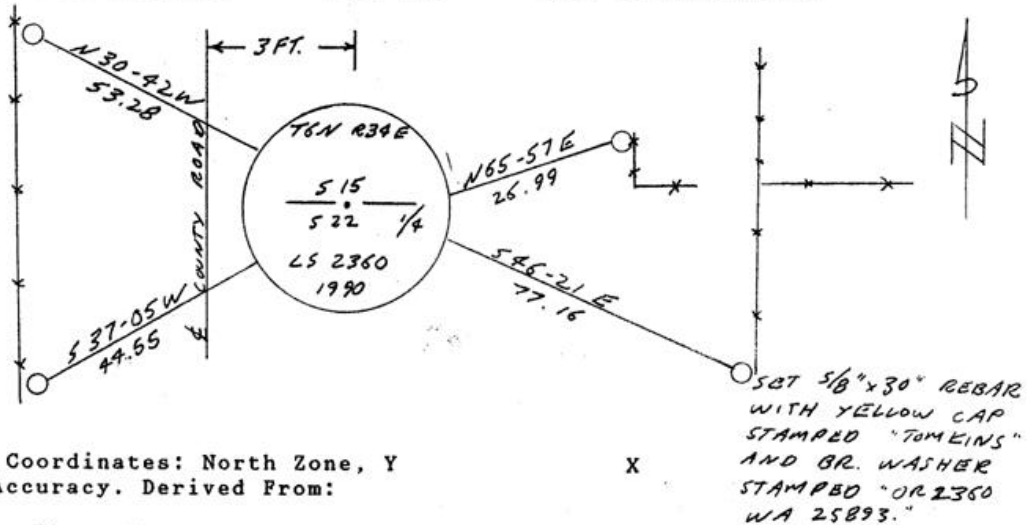
CORNER ORIGINALLY ESTABLISHED BY ODELL IN 1865 UNDER GLO CONTRACT NO. 110 AS A POST, CHARRED STAKE, PITS, AND MOUND. CORNER WAS RE-ESTABLISHED DURING COUNTY ROAD NO. 308 SURVEY AS A "POROUS BASALT STONE 13"X9"X8" MARKED 1/4 ON N. FACE". A 1951 SURVEY BY MEL NEWBILL SHOWS A "ROCK" AND AN "I.PIN" EQUIDISTANT BETWEEN 1/4 CORNER AND SOUTHEAST SEC. COR. CRIGER'S 1951 SURVEY SHOWS A "STONE FOUND"

2. Description of Evidence Found:

NO DIRECT EVIDENCE FOUND. 1266.16' WEST OF SECTION CORNER WE FOUND A SMOOTH 1/2" IRON PIN, OF THE TYPE FREQUENTLY USED BY NEWBILL. TO REESTABLISH THIS CORNER I PROJECTED A LINE FROM THE SOUTHEAST SECTION CORNER THROUGH THE IRON PIN AN EQUAL DISTANCE TO THE WEST. CORNER FALLS IN PAVED ROAD ON THE EXTENSION OF AN EAST-WEST FENCE.

3. Describe Monument, Accessories, and Corollary Data to Perpetuate this Corner

Location. Diagram corner, indicate meridian and reference to map of Record. Surveyor's Field Book No. Page No. Date of Work 2/8/91



Oregon Plane Coordinates: North Zone, Y
 Order Accuracy. Derived From:

Pin Pointed on Photo No. Date Located at

SURVEYOR'S CERTIFICATE

This corner record correctly represents work performed by me or under my direction in compliance with the provisions of the laws of the State of Oregon.

Signature: *Paul W.P. Tomkins* Date: 2/10/91

REGISTERED PROFESSIONAL LAND SURVEYOR

Paul W.P. Tomkins

OREGON JULY 26, 1988 PAUL W. P. TOMKINS 2360

Certificate No. 2360

AUDITOR'S CERTIFICATE

Filed for record this ... day of ..., 19... at ... M. in Book ... of ... at Page ... at the request of ...

County Auditor

RECEIVED BY

Umatilla County Surveyor

Date 4-91

Rec'd By KA

No. 91-21-C