

P. W.P. TOMKINS, LAND SURVEY
 LAND CORNER RECORD

UMATILLA County

T 06N, R 34E., W.M.

Corner Code No. L-13

Segregated Surveys:

Name: WEST 1/4 CORNER SECTION 15

Corner No.:

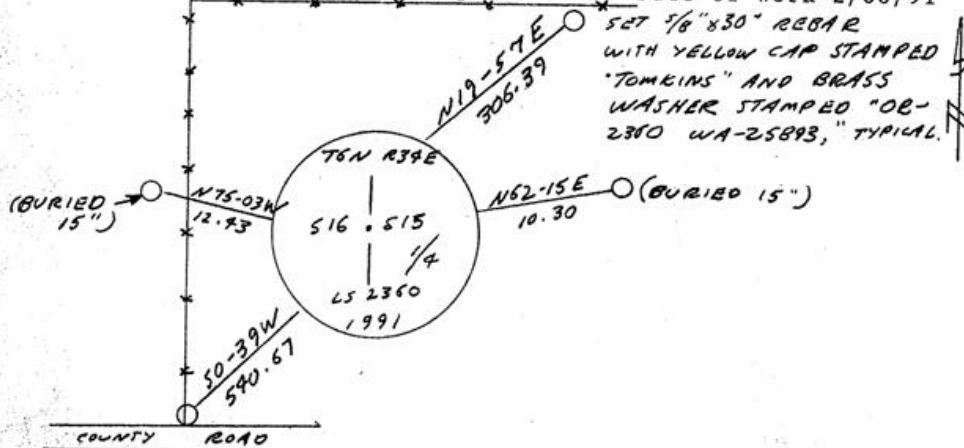
Reserve, Townsite

DLC, HES, Tract, Mining Claim, Indian Allotment, Federal

1. History of Corner Establishment and Subsequent Restoration:
 CORNER ORIGINALLY ESTABLISHED BY ODELL IN 1865 UNDER GLO CONTRACT NO. 110 AS A POST AND CHARRED STAKE, PITS AND RAISED MOUND. CORNER REESTABLISHED DURING 1888 COUNTY ROAD NO. 308 SURVEY AS A 15"X13"X10" STONE MARKED 1/4 ON WEST FACE. 1951 SURVEY BY MELTON AND CRIGER SHOWS "1/4 COR. FOUND."

2. Description of Evidence Found:
 FOUND 18" EAST OF FENCE A BASALT STONE APPROXIMATELY 2 1/2 FT. BELOW GROUND. STONE MEASURES 14"X14"X11", HAS A "+" ON TOP AND A DEEPLY SCRIBED "1/4" ON WEST FACE.

3. Describe Monument, Accessories, and Corollary Data to Perpetuate this Corner Location. Diagram corner, indicate meridian and reference to map of Record. Surveyor's Field Book No. Page No. Date of Work 2/08/91



Oregon Plane Coordinates: North Zone, Y
 Order Accuracy. Derived From:

Pin Pointed on Photo No. Date

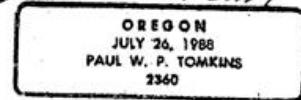
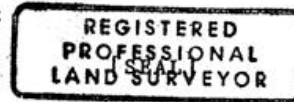
Located at

SURVEYOR'S CERTIFICATE

This corner record correctly represents work performed by me or under my direction in compliance with the provisions of the laws of the State of Oregon.

Date 2/10/91

Signature *Paul W.P. Tomkins*



Certificate No. 2360

AUDITOR'S CERTIFICATE

Filed for record this ... day of ... , 19... at ... M. in Book ... of ... at Page ... at the request of ...

RECEIVED BY

Umatilla County Surveyor

County Auditor

Date 3-91
 Rec'd By KA
 No. 91-21-C