

OREGON CORNER RESTORATION FORM

Section 14 Township 6 N Range 34 E, W.M. Corner Code No. J17

County Umatilla Date 9-10-90

CORNER DESIGNATION

NW Corner Govt Lot 4 Section 14

- Condition Report Only
- Not Found
- Renewed
- Unrecorded
- Surveyed In
- Referenced Out

Previous Renewals/Surveys, etc. Original corner was a post, mound, pits, & stake by William H. Odell in 1865. Criger in 1951 found a yellow stone. Newbill in 1953 and Krumbein in 1970 found a pipe.

Monument(s) & Accessories Found: (Condition and Source)

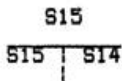
Found a 1" Iron pipe as noted by Newbill (90-61-AX) and Krumbein (H-67-AX).

The pipe is located 2.5' N of an E-W fence, buried 6" deep.

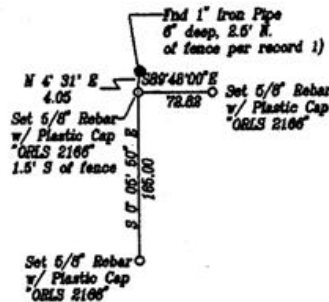
Also found on stateline: a 1'x 3' concrete slab marked "Washington/Oregon"; the original Odell 21 Mile stone; a bolt of record - NE corner McKee property; a 1" square iron bar of record for SE corner of Washington fraction Section 15; and a bolt of record for the NE corner Oregon fractional Section 14.

Monument Detail

T6N, R34E, WM Umatilla Co, Or.



Sketch



Monument Set (Procedures and Description)

Set a 5/8" rebar with plastic LS cap "ORLS 2166" for the corner at the record distance using the found 21 mile stone and the found bolt NE corner of Oregon fractional Section 14 for alignment.

This location is 4' S of the found pipe. It is likely that the pipe was set at record distance using the 21 mile stone and the concrete slab for line.

New Accessories

A 1" Iron Pipe bears N 4° 31' E, 4.05 feet;

A 5/8" rebar with plastic LS cap "ORLS 2166" bears S 89° 48' 00" E, 72.82 feet;

A 5/8" rebar with plastic LS cap "ORLS 2166" bears S 0° 05' 50" E, 165.00 feet.

Location & Comments

Corner is located 73 feet West of a corner of Stateline road in an E-W fence.

RECEIVED BY
Umatilla County Surveyor
 Date 9-90
 Rec'd by RD
 No. 90-63-R

Compass Declination 0.0
 Firm/Agency _____
Dwight M. Bartleson L.S.
 Address Rt. 1, Box 46
Athena, OR 97813
 Party Chief D. Bartleson
 Notes D. Bartleson
 Witness T. Bartleson

Surveyor's Seal

REGISTERED PROFESSIONAL LAND SURVEYOR

Dwight M. Bartleson

OREGON
 JULY 26, 1985
DWIGHT M. BARTLESON
 02166LS