

UMATILLA County

T 06N, R 34E., W.M.

Corner Code No. J-15

Segregated Surveys:

Name: NORTH 1/4 CORNER FRACTIONAL SECTION 15

Corner No.:

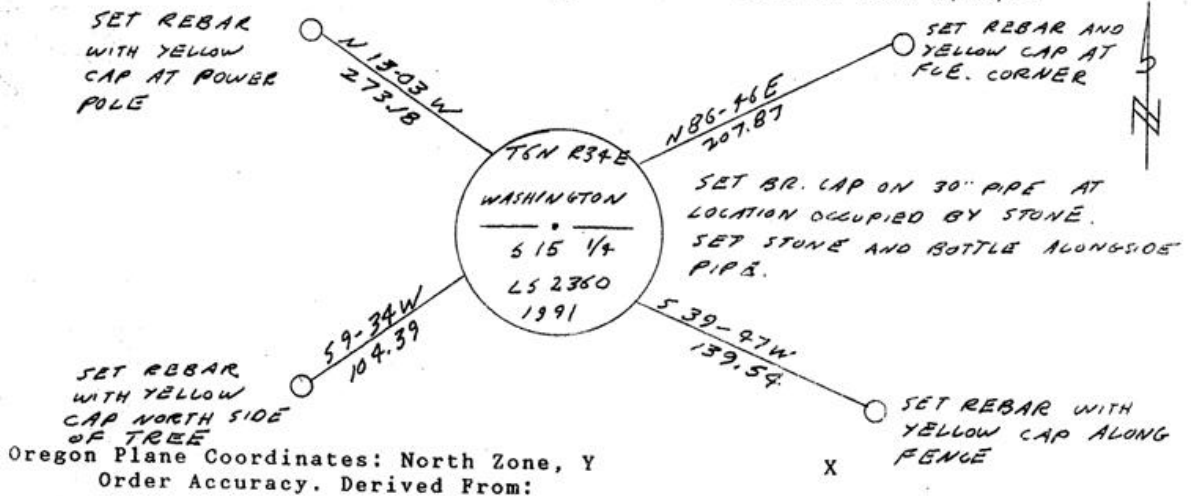
Reserve, Townsite

DLC, HES, Tract, Mining Claim, Indian Allotment, Federal

1. History of Corner Establishment and Subsequent Restoration:  
NO RECORD AVAILABLE FOR THIS CORNER.

2. Description of Evidence Found:  
FOUND ALONG STATE LINE ALONG AN OLD NORTH - SOUTH ROW OF DEAD TREES A 6"X11"X17" STONE WITH PROMINENT SCRIBED "+" AND ANTIQUE BOTTLE ALONGSIDE.

3. Describe Monument, Accessories, and Corollary Data to Perpetuate this Corner Location. Diagram corner, indicate meridian and reference to map of Record. Surveyor's Field Book No. Page No. Date of Work 2/08/91



Oregon Plane Coordinates: North Zone, Y  
Order Accuracy. Derived From:

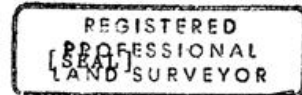
Pin Pointed on Photo No. Date Located at

SURVEYOR'S CERTIFICATE

This corner record correctly represents work performed by me or under my direction in compliance with the provisions of the laws of the State of Oregon.

Date 2/10/91

Signature Paul W.P. Tomkins



Certificate No. 2360

AUDITOR'S CERTIFICATE

Filed for record this ... day of ..., 19... at ... M. in Book ... of ... at Page ... at the request of ...

RECEIVED BY

Umatilla County Surveyor

Date 3-91

Rec'd By KA

No. 91-21-C

County Auditor