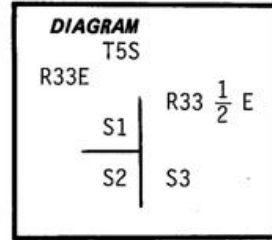


CERTIFIED RECORD OF LAND CORNER MONUMENTATION

Index File No. E-25

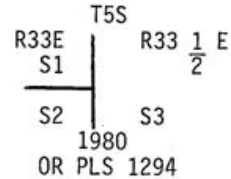
History of original corner establishment: Corner established under G.L.O. Contract No. 410, in 1881 by George S. Pershin. Surveyor General's records state. Set basalt stone 16x10x5 ins. 11 ins. in ground for cor. to Sec. 1, 12, 6 & 7 marked with 5 notches on S. and 1 notch on N. edges.



- A Pine 6 ins. dia. bears N9<sup>0</sup>E, 90 lks. dist. marked T5S R34E S6BT.
- A Pine 8 ins. dia. bears S68<sup>0</sup>E, 88 lks. dist. marked T5S R34E S7BT.
- A Pine 8 ins. dia. bears S75<sup>0</sup>W, 138 lks. dist. marked T5S R33E S12BT.
- A Pine 8 ins. dia. bears N48<sup>0</sup>W, 139 lks. dist. marked T5S R33E S1BT.

Description of corner evidence found: Umatilla Co. Record Survey No. H-50-B shows finding the original stone and BTs. In place of stone a 2"x36" galvanized pipe was set along with two new BTs. I found the said 2"x36" galvanized pipe. Fnd. Pine 26" dia. bearing N8<sup>0</sup>E 59.4 ft. with open blaze and visible scribing "R34E S6". Found Pine 24" dia. down and dead bearing S76<sup>0</sup>W, 91.1 ft. with visible scribing T5S R33E S2BT. Found L.P. Pine (dead standing) 12" dia. bearing N19<sup>0</sup>W, 35.7 ft. scribed T5S R33E S1 BT. L.P. Pine (dead standing) 7" dia. bearing S60<sup>0</sup>W, 21.6 ft. scribed T5S R33E S12 BT.

Description of monument and accessories I established to perpetuate the original location of this corner: In place of found 2"x36" galvanized pipe, set 2 1/2"x30" galvanized pipe with brass cap stamped: Set pipe 24" in ground with mound of stone to cap.



New BTs.

- A Lodge Pole Pine 6" dia. bears N52<sup>0</sup>W, 28.8 ft., scribed T5S R33E S1 BT.
- A Lodge Pole Pine 8" dia. bears S31<sup>0</sup>W, 53.0 ft., scribed T5S R33E S12 BT.

Attached 54-3 and 54-4 signs to all BTs. Attached brass washer stamped LS1294 to foot blaze of new BTs. Painted blazes and 6" band around all BTs. Attached 54-2 and 54-4 and 54-5 signs to wood post on south side of U.S.F.S. Road No. 5160-290



I hereby certify the above corner monument was reestablished as herein described on June 4, 1980.

Witnesses: R. Orton  
G. Lester  
L. Huntsman

Office of..... County Surveyor..... County of..... Umatilla  
Oregon  
State of....., I hereby certify that the within instrument was filed in this office  
for record on the..... day of..... 19.80  
..... by.....  
(COUNTY OFFICIAL) (DEPUTY)