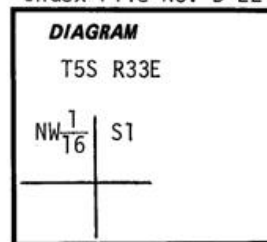


CERTIFIED RECORD OF LAND CORNER MONUMENTATION

Index File No. B-22

History of original corner establishment:

No corner was originally set.

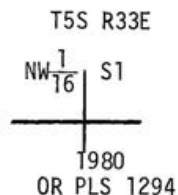


Description of corner evidence found:

Description of monument and accessories I established to perpetuate the

original location of this corner: At surveyed point set
2 1/2" X 30" galvanized pipe with brass cap stamped:

Set pipe 20" in ground with mound of stone to cap.



Bearing Trees:

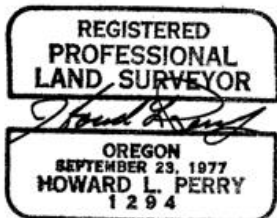
A Lodge Pole Pine 6" dia bears N32°W, 65.2 ft., scribed NW1/16 S1 BT.

A Ponderosa Pine 11" dia bears S42°E, 32.5 ft., scribed NW1/16 S1 BT.

Attached 54-3 & 54-4 signs to both BTs. Attached brass washer stamped
LS 1294 to foot blaze of both BTs. Painted blazes and 6" band around
both BTs Red. Attached 54-2 & 54-4 signs to metal post 5 ft east of corner.
Attached 54-2 & 54-9 signs to metal post 5 ft south of corner.

I hereby certify the above corner monument was established as herein described on June 19, 1980.

Witnesses: R. Orton
G. Orton
D. Allen



Office of.....County Surveyor..... County of.....Umatilla.....
State of.....Oregon....., I hereby certify that the within instrument was filed in this office
for record on the.....day of.....December....., 19.....80
.....David Krumbein..... by.....B. Shatt.....
(COUNTY OFFICIAL) (DEPUTY)