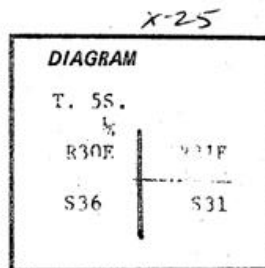


History of original corner establishment: Corner established in 1880
by George S. Pershin, under Contract No. 373.

Surveyor General Record States:

Set a basalt stone 20x14x8 on slight NW slope for $\frac{1}{4}$ sec. cor.:

A pine 22 in. in diam. brs. East 68 lks. dist.
A pine 36 in. in diam. brs. S. 48° W. 58 lks. dist.



No record of subsequent remonumentation found in County Records.

Description of corner evidence found:

I did not find the original $\frac{1}{4}$ corner stone. I establish this corner at record bearing and distance from the one remaining BT. From the corner point:

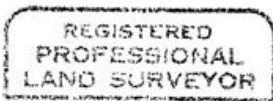
A 40" pine bears S. 48° W. 38.3 ft. mkd. $\frac{1}{4}$ S BT, in blaze that has been opened years ago.

Description of monument and accessories I established to perpetuate the original location of this corner:

At the corner points: Set a 2"x30" galvanized iron pipe 14" in the ground marked as shown: From which I scribe one NEW BEARING TREE:

A 20" pine bears S. 70° E. 141.6 ft. mkd. T5S R31E $\frac{1}{4}$ S31 BT.

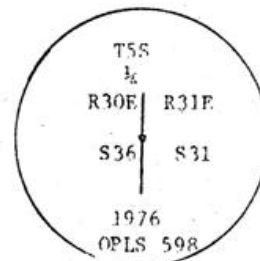
I nailed a brass washer marked "OPLS 598" to the BT blaze of this tree. Set a steel fence post 5 ft. N. of corner. Raised a mound of stone, 3 ft. base to top of pipe. Corner is at the SE corner of a stock water pond. Used a compass with 20° E. variation and steel tape, measuring to center of BTs.



Robert D. Baggett

OREGON
JULY 12 1905
ROBERT D. BAGETT
500

Sept. 30, 1976



Office of.....County Surveyor..... County of.....Multnomah.....

State of.....Oregon....., I hereby certify that the within instrument was filed in this office for record on the..... day of....., 19.....

..... by
(COUNTY OFFICIAL) (DEPUTY)

I-142-R
X-25