

Index File No. V-25
 T 5 S. R. 30 E.
 Merid. Willamette

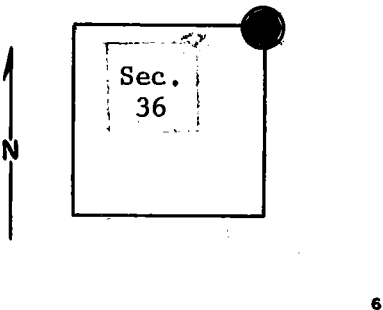
CORNER RECORD (SEARCH)

(Ref. FSM 7151.4)

Tract or Survey No. Cor. No.

R.D. Ukiah County Umatilla
 N.F. Umatilla State Oregon

CORNER DIAGRAM



DESCRIBE CORNER MONUMENT FOUND

Basalt stone, 16" x 14" x 10", 12" above ground in good condition.
 Difficult to interpret (stone sets in center of circle of smaller stones.)

DESCRIBE BEARING TREES OR OTHER OFFICIAL ACCESSORIES FOUND

A 24" p. pine bears S.57°E., approx. 60 ft., scribed T5S, R31E, S31. Has location poster on scribed side. (Dated 1940)
 A 20" p.pine bears N.60°W., approx. 22 ft., scribed T5S, R30E, S25. Has location poster on scribed side. (Dated 1958)

(cont. in Block 12)

PHOTO IDENTIFICATION DATA

Photo No.
 Filed At.
 Object Ident.
 Ident. By
Signature

DESCRIBE CORNER LOCATION RELATIVE TO NEAR-BY FEATURES, ALSO HOW TO REACH CORNER

Monumented By BLM, 1978

PLANE COORDINATE POSITION DATA

State Zone
 X
 Y
 Estab. By
Agency

Signature	Title	Division	Headquarters	Date	7100-52-(3/68)
T, Hollamon	Eng, Tech,		S, O,	4/25/74	

CORNER RECORD (PERPETUATION)

MONUMENT: DESCRIBE NEW MONUMENT SET, OR WORK DONE TO PRESERVE EXISTING MONUMENT

ACCESSORIES : DESCRIBE NEW B.T.'s WITNESS OBJECTS ETC. ESTABLISHED, OR WORK DONE TO PRESERVE EXISTING EVIDENCE

I placed a B.T. tag on the B.T. in Sec. 31 and 2 B.T. tags on the B.T. in Sec. 25 (east and west sides for visibility).

Work Done By _____ Title _____ Date _____ State Registration No. or Agency _____
Certified Cor. Record Prepared ? Yes No Filed At: _____ Date _____

REMARKS

(3 cont)

Location poster (dated 1958 and 1969) on 15" p.pine on east edge of old logging road approx. 275 ft., west. (Road between Wilkins Creek and Sugarbowl Ridge) (Also a "State Forest Boundary" metal tag on this same tree.)

Index File No. T. R. M. Tract or Surv. No. Cor. 12 13