

OREGON CORNER RESTORATION FORM

COUNTY: Umatilla DATE: 08/01/02

CORNER DESIGNATION: J-19, The North Quarter of Section 14, T5S., R31E., W.M.

PREVIOUS RENEWALS/SURVEYS ETC.: Corner originally set by George S. Pershin, under Contract No. 373, dated Sept. 17, 1880. Notes state: Set basalt stone, 14 x 10 x 7, in mound of stone, on level, for 1/4 Section corner. A pine 12 ins. diam., brs. N 13° W, 51 lks. dist., no other trees.

MONUMENT AND ACCESSORIES FOUND: Found corner stone, a 14" x 10" x 7" basalt stone marked 1/4 lying displaced by a rock crib. There is no sign of the mound of stone. Corner appears to have been destroyed by road construction.

MONUMENT MARKING DETAIL:

T5S R31E
1/4 S11
S14
2002
PLS 1106

MONUMENT SET:

Reestablished corner position by single proportionate measure between the recovered NW and NE Corners of Section 14. At position determined by survey, set a 2 1/2" brass cap on a 1 1/4" x 30" galvanized iron pipe with top flush with ground in a wide area on the West side County Road No. 448 (Ukiah-Albee Rd.) Monument marked as shown in "Monument Marking Detail."

New Accessories:

The center of a metal angle brace which is the Southwest corner post of the Ukiah Cemetery bears N 35° E, 78.8 feet.

A 5/8" x 30" iron rebar with a yellow plastic cap marked "OR PLS 1106, WA PLS 17372", with cap set 1" above ground in the East right-of-way fence for County Road bears S 44° E, 56.3 feet.

A 3/4" brass washer stamped "PLS 1106" nailed to a wood fence post rock crib 1 foot above ground bears S 20° W, 62.0 feet. The Corner Stone was found by this rock crib.

A 3/4" brass washer stamped "PLS 1106" nailed to a power pole 1 foot above ground bears N 05° W, 160.7 feet.

Attached bearing object signs to all accessories. Set a steel fence post with a witness post sign wired to it 1 foot East of the corner.

LOCATION AND COMMENTS:

There is a 6" diameter ponderosa pine tree 18 feet Westerly from the corner monument. This tree is growing under the overhead power lines and will probably get cut down when the lines are maintained so it was not used as a bearing tree.

STATE PLANE COORDINATE, OREGON NORTH ZONE, NAD 83/91, INT. FOOT:

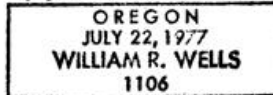
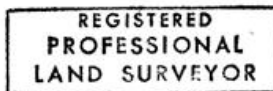
N = 541496.20
E = 8606744.10

FIRM: William R. Wells, PLS
P.O. Box 1696
Pendleton, OR 97801

COMPASS DECLINATION: 18° East

Surveyor's Seal

Witnesses: Jason Wells, LSIT
Mark Hammersla
5S31J19



RECEIVED BY

Umatilla County Surveyor

Date 10-02

Rec'd By KK

No. 02-218-B

renews 6-30-04