

Index File No. V-25  
 T 5 S.      R. 30 E.       
 Merid. Willamette

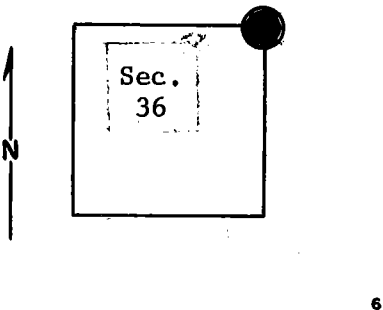
**CORNER RECORD (SEARCH)**

(Ref. FSM 7151.4)

Tract or Survey No.                      Cor. No.             

R.D. Ukiah County Umatilla  
 N.F. Umatilla State Oregon

**CORNER DIAGRAM**



**DESCRIBE CORNER MONUMENT FOUND**

Basalt stone, 16" x 14" x 10", 12" above ground in good condition.  
 Difficult to interpret (stone sets in center of circle of smaller stones.)

**DESCRIBE BEARING TREES OR OTHER OFFICIAL ACCESSORIES FOUND**

A 24" p. pine bears S.57°E., approx. 60 ft., scribed T5S, R31E, S31. Has location poster on scribed side. (Dated 1940)  
 A 20" p.pine bears N.60°W., approx. 22 ft., scribed T5S, R30E, S25. Has location poster on scribed side. (Dated 1958)

**PHOTO IDENTIFICATION DATA**

Photo No.                       
 Filed At.                       
 Object Ident.                       
 Ident. By                       
*Signature*

(cont. in Block 12)

**DESCRIBE CORNER LOCATION RELATIVE TO NEAR-BY FEATURES, ALSO HOW TO REACH CORNER**

*Monumented By BLM, 1978*

**PLANE COORDINATE POSITION DATA**

State              Zone               
 X                       
 Y                       
 Estab. By                       
*Agency*

Signature	Title	Division	Headquarters	Date	7100-52-(3/68)
T, Hollamon	Eng, Tech,		S, O,	4/25/74	

CORNER RECORD (PERPETUATION)

MONUMENT: DESCRIBE NEW MONUMENT SET, OR WORK DONE TO PRESERVE EXISTING MONUMENT

ACCESSORIES : DESCRIBE NEW BT'S WITNESS OBJECTS ETC. ESTABLISHED, OR WORK DONE TO PRESERVE EXISTING EVIDENCE

I placed a B.T. tag on the B.T. in Sec. 31 and 2 B.T. tags on the B.T. in Sec. 25 (east and west sides for visibility).

Work Done By \_\_\_\_\_ Title \_\_\_\_\_ Date \_\_\_\_\_ State Registration No. or Agency \_\_\_\_\_  
Certified Cor. Record Prepared ? Yes No Filed At: \_\_\_\_\_ Date \_\_\_\_\_

REMARKS

(3 cont)

Location poster (dated 1958 and 1969) on 15" p.pine on east edge of old logging road approx. 275 ft., west. (Road between Wilkins Creek and Sugarbowl Ridge) (Also a "State Forest Boundary" metal tag on this same tree.)

Index File No. T. R. M. Tract or Surv. No. Cor. 12 13