

CERTIFIED RECORD OF LAND CORNER MONUMENTATION

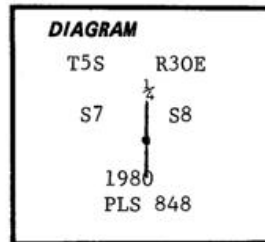
G-5

History of original corner establishment:

Corner established in 1883, by F.W. Cambell under General land office contract No. 468. Surveyor General's records state: Set fir post 3ft. long 3 inches square, 24" in ground. For 1/4 sec. corner marked 1/2 S on W face.

From which:

A spruce 18 inches dia. bears S 12 E 37 lks. dist. marked. 1/2 S BT
A spruce 8 inches dia. bears N 60 W 21 lks. dist. Marked 1/2 S BT.



Description of corner evidence found:

Found remains of rotten wood in 3" hole with a mound of stone over hole, & 2 1/2" pole scribed 1/2 lying on the mound of stone appears to be about 20-30 years old. Found no evidence of spruce trees in the area. Since the evidence found is harmonious with surrounding found corners it's position is accepted as the 1/2 corner.

Description of monument and accessories established to perpetuate the original location of this corner:

Set 3"x30" galv iron pipe with 3" brass cap 20" in the ground & placed a ring of stone around pipe. Stamped brass cap as shown in diagram.

From Which:

A fir 14" dia. bears N 15 E 24.4 ft. scribed 1/2 S 8 BT.

A fir 12" dia. bears N 16 W 23.8 ft. scribed 1/2 S 7 BT.

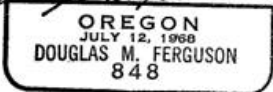
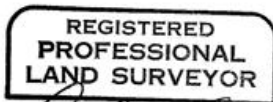
Nailed brass washers stamped PLS 848 & bearing tree signs to both trees, painted red band around trees

Set steel posts with warning sign 5'N.

(Bearing mag. comp. 20 E Dec. 20)

Witness to above corner

L. Wyllie



Office of... Surveyor County of... Umatilla
 State of... Oregon I hereby certify that the within instrument was filed in this office
 for record on the 29 day of January , 1981
David H. Kelm by
 (COUNTY OFFICIAL) (DEPUTY)

G-5

S-63-M